

Symonds  
& Sampson

Waytown  
Bridport, Dorset



# Waytown

Bridport

Dorset

DT6 5SH

A handsome four bedroom detached house in a wonderful, peaceful rural location within walking distance of the village public house.



- Peaceful rural location
- Substantial home
- Double garage and extensive parking
- Walking distance of the village pub

Guide Range £800,000 - £850,000

Freehold

Bridport Sales  
01308 422092  
[bridport@symondsandsampson.co.uk](mailto:bridport@symondsandsampson.co.uk)





## THE DWELLING

This detached home was the original managers house for the 19th century flax mill deep in the Dorset countryside. In 2004, the whole site was transformed into 12 beautifully appointed properties set in 5 acres, while the mill house itself, now beautifully decorated in wisteria, was substantially extended from its original footprint. This really is 21st century rural living at its most civilised.

## ACCOMMODATION

The property is conventionally arranged around a spacious hallway on the ground floor, with an equally spacious landing above. On the left hand side, a large sitting room stretches from the front to the rear of the property, with a central focal point of a fireplace and double doors leading into the garden to one end, and views over the front garden to the other. Behind the hallway there is a formal dining room with access from both the sitting room and the kitchen. The kitchen has space for an everyday dining table to its centre, and a comprehensive range of floor and wall mounted units and cupboards topped by granite work surfaces to the sides. Integral appliances include an induction hob, an electric double oven and a dishwasher. Beyond the kitchen, a door leads through to a large conservatory which looks out over the rear gardens. Behind the kitchen is the most useful of rooms, a utility room. The hall, kitchen and utility room are laid to attractive yet practical quarry tile, while there is a cloakroom off the kitchen. Upstairs there are four bedrooms, the principle of which mirrors the sitting room below with an en suite shower room and takes in the best of the views. The three remaining bedrooms share a family bathroom. From the landing a spiral staircase leads up to an occasional bedroom or studio, beyond which there is a doorway through to a storage attic space. The property has UPVC double glazing, has brace and ledge doors, oil fired central heating and PV panels on the rear of the garage that yield in excess of £2000 per annum at the current rates.







## OUTSIDE

There is a formal garden to the front of the house laid to lawn, and punctuated by a number of mature shrubs, trees and a rose bed with the birches being of particular note. The rear gardens stretch out from the back of the house and an extensive area of paved terrace, which makes an ideal entertaining area edged by raised brick sided herbaceous borders and rose beds. Beyond the borders, the gardens are for the most part laid to lawn edged by timber fencing, with a gateway through to a large driveway. The driveway is enclosed by further timber fencing and laid to gravel, providing extensive parking and a turning space. A

gateway lies to one side leading onto the lane with, to the other side, a large double garage decorated with wisteria and twin up and over doors, light and power.

## SERVICES

Mains water, electricity and drainage. Oil fired central heating. PV panels.  
Broadband speed: Superfast broadband is available.  
Mobile phone coverage: Network coverage is limited indoors and mostly limited outdoors.  
Dorset Council: 01305 251010.  
Council Tax Band: F.  
EPC: C.

## SITUATION

Waytown is a small hamlet a short distance from the larger village of Netherbury which is in a designated conservation area comprising mainly period stone houses and cottages for which the area is well known. It has a church and village hall and the 'Hare and Hounds' public house can be found in Waytown. Beaminstor to the north offers many facilities including a good range of shops, churches, post office, library, two schools, health centres, other professional services and many social and sporting facilities. The market town of Bridport lies approximately 4 miles to the South. Bridport has a history of rope-making and is now a gateway





to the Jurassic, World Heritage coastline at nearby West Bay. It has a variety of independent shops, supermarkets, public houses and restaurants catering for a range of tastes and excellent arts and music events.

**DIRECTIONS**

What3Words///sharper.corrects.timidly

**MATERIAL INFORMATION**

Slope Mill House has a 12th share of the communal grounds and therefore a one 12th liability for maintenance which amounts to £825 per annum for grass cutting etc.





## Slope Mill House, Waytown, Bridport

Approximate Area = 2279 sq ft / 211.7 sq m

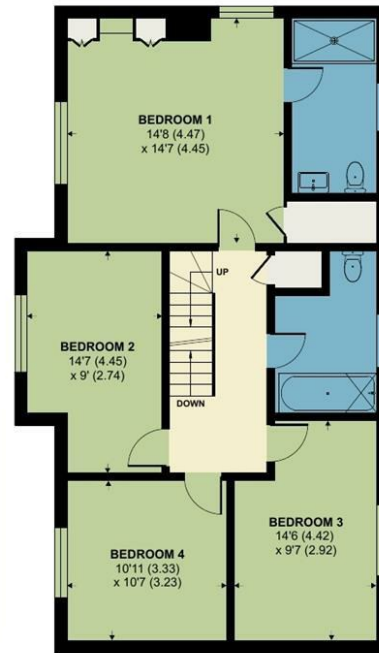
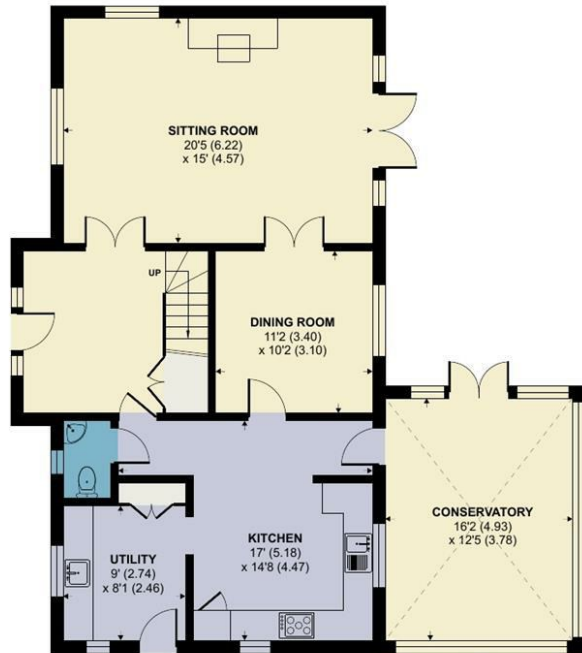
Limited Use Area(s) = 128 sq ft / 11.8 sq m

Garage = 380 sq ft / 35.3 sq m

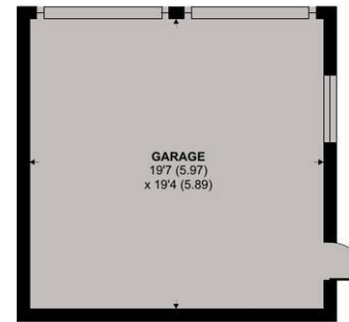
Total = 2787 sq ft / 258.9 sq m

For identification only - Not to scale

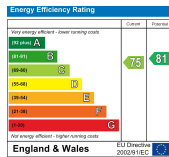
Denotes restricted  
head height



SECOND FLOOR



GARAGE



Floor plan produced in accordance with RICS Property Measurement 2nd Edition, Incorporating International Property Measurement Standards (IPMS2 Residential). Produced for Symonds & Sampson. REF: 1206757



Bridport/SVA/23042025REV



naea | propertymark  
PROTECTED

www.  
the  
londonoffice.co.uk  
40 ST JAMES'S PLACE SW1

01308 422092

bridport@symondsandsampson.co.uk  
Symonds & Sampson LLP  
23, South Street,  
Bridport, Dorset DT6 3NU



Important Notice: Symonds & Sampson LLP and their Clients give notice that: 1. They have no authority to make or give any representations or warranties in relation to the property. These particulars do not form part of any offer or contract and must not be relied upon as statements or representations of fact. 2. Any areas, measurements or distances are approximate. The text, photographs and plans are for guidance only and are not necessarily comprehensive. It should not be assumed that the properties have all necessary planning, building regulation or other consents and Symonds and Sampson LLP have not tested any services, equipment of facilities. 3. We have not made any investigation into the existence or otherwise of any issues concerning pollution of the land, air or water contamination and the purchaser is responsible for making his/her own enquiries in this regard. 4. The property is sold subject to and with the benefit of all existing wayleaves, easements and rights of way whether public or private, specifically mentioned or not. The vendors shall not be required to define any such rights, privileges or advantages.

SALES | LETTINGS | AUCTIONS | FARMS & LAND | COMMERCIAL | NEW HOMES | PLANNING & DEVELOPMENT