

Symonds  
& Sampson

# Badger Row

Higher Street, Bradpole, Bridport

1-6 BADGER ROW

PRIVATE  
LAND  
NO PARKING  
ANYTIME



# Badger Row

Higher Street  
Bradpole  
Bridport  
DT6 3FW

A beautifully presented three bedroom terraced house situated in a delightful village location, benefitting from a garage, parking and a terraced landscaped rear garden.



- Beautifully presented throughout
- Three bedrooms, three bathrooms
  - Garage and parking
- Terraced rear garden with lovely country views

Guide Price £360,000

Freehold

Bridport Sales  
01308 422092  
[bridport@symondsandsampson.co.uk](mailto:bridport@symondsandsampson.co.uk)





## THE PROPERTY

Having been built in 2016, this stone built modern village house has been well maintained and is beautifully presented throughout. Arranged over three floors, the accommodation is bright and spacious and there is the additional benefit of parking, a garage in a block, and a terraced rear garden enjoying fantastic views towards Boarsbarrow Hill.

The property opens into a spacious hallway, with a useful utility room to the left hand side with space and plumbing for a washing machine and for coat and shoe storage. There is a double bedroom to the right hand side with a Jack and Jill shower room fitted with a contemporary suite comprising a large walk-in shower, wc and sink. Stairs rise to the first floor with the bright and spacious kitchen/dining/living room to the rear, with double doors onto the south facing patio. The kitchen is fitted with a range of wall and base units with an integrated oven, gas hob, dishwasher, microwave and fridge/freezer. The principal bedroom is to the front, benefitting from extensive built-in wardrobes and an ensuite bathroom, comprising bath with shower over, wc and sink.

Further stairs rise to a small landing with built-in storage from which the third bedroom is accessed, enjoying views over the garden and benefitting from an ensuite wc.

## OUTSIDE

There are raised planted gardens to the front, with a pathway leading from the parking area to the front door. The south facing rear garden is designed for ease of maintenance, with a patio area immediately adjoining the house. Steps rise to a delightful elevated seating area, with fantastic views towards Boarsbarrow Hill and open countryside. There is an access gate to the rear leading to the end of the terrace and back down to street level. The garage is within a block to the side of the property, and has a part-boarded loft for storage. There is a parking space adjoining the garage.

## SITUATION

The property is situated in the village of Bradpole, on the edge of the bustling and vibrant market town of Bridport, with countryside close at hand. Bridport has a history of ropemaking and is now a gateway to the Jurassic, World Heritage coastline at nearby West Bay. It has a variety of independent shops, supermarkets, public houses and restaurants catering for a range of tastes and excellent arts and music events. Bridport is conveniently placed for Dorchester and Weymouth to the east and Axminster to the west. Walking, water sports and riding opportunities are plentiful in the area. Communication links are good with road links along the A35 and mainline stations at Maiden Newton, Dorchester, Axminster and Crewkerne.

## SERVICES

Mains electricity, gas, water and drainage. Gas fired central heating.

Broadband speed: Superfast broadband is available.

Mobile coverage: Network coverage is most good both indoor and outdoor.

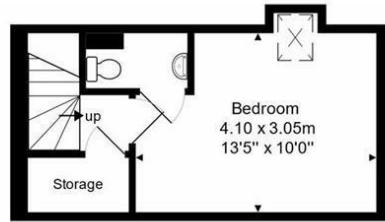
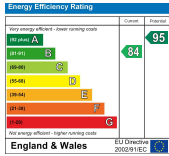
(information from <https://checker.ofcom.org.uk>)

## LOCAL AUTHORITY

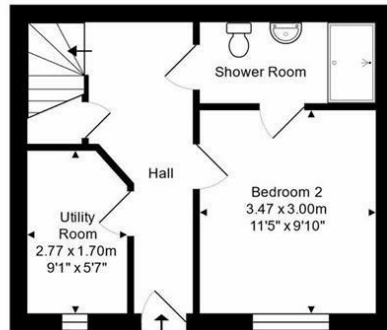
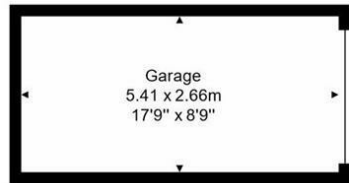
Dorset Council 01305 251010.

Council Tax Band C.

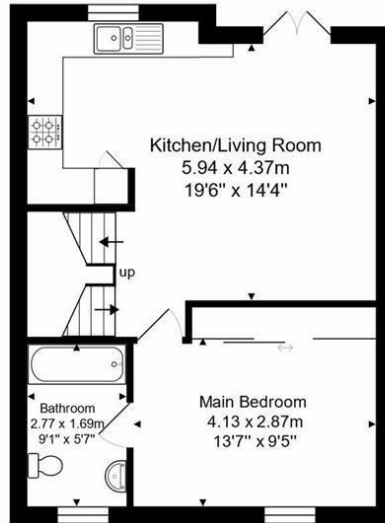




Second Floor



Ground Floor



First Floor



Total Area: 95.8 m<sup>2</sup> ... 1031 ft<sup>2</sup> (excluding garage)  
Not to scale. Measurements are approximate and for guidance only.



Bridport/DME/28022025/REV



01308 422092

bridport@symondsandsampson.co.uk  
Symonds & Sampson LLP  
23, South Street,  
Bridport, Dorset DT6 3NU



Important Notice: Symonds & Sampson LLP and their Clients give notice that: 1. They have no authority to make or give any representations or warranties in relation to the property. These particulars do not form part of any offer or contract and must not be relied upon as statements or representations of fact. 2. Any areas, measurements or distances are approximate. The text, photographs and plans are for guidance only and are not necessarily comprehensive. It should not be assumed that the properties have all necessary planning, building regulation or other consents and Symonds and Sampson LLP have not tested any services, equipment or facilities. 3. We have not made any investigation into the existence or otherwise of any issues concerning pollution of the land, air or water contamination and the purchaser is responsible for making his/her own enquiries in this regard. 4. The property is sold subject to and with the benefit of all existing wayleaves, easements and rights of way whether public or private, specifically mentioned or not. The vendors shall not be required to define any such rights, privileges or advantages.

**SALES | LETTINGS | AUCTIONS | FARMS & LAND | COMMERCIAL | NEW HOMES | PLANNING & DEVELOPMENT**