

Lower Sea Lane

Charmouth, Bridport



Lower Sea Lane

Charmouth
Bridport
DT6 6LR

Detached house situated in an outstanding location, moments from the beach enjoying sea and country views.



- Spectacular location moments from the beach
 - Coastal and country views
 - In need of complete renovation
 - Gated driveway



Guide Price £585,000

Freehold

Bridport Sales
01308 422092
bridport@symondsandsampson.co.uk



THE DWELLING

This property is all about location, with only a select few properties in the area which can boast such a short level walk to the beach and offer such views. Add the potential to create value and you have a rare opportunity indeed.

ACCOMMODATION

At present on the ground floor there are two reception rooms and a kitchen. The kitchen comprises of eye and low level units with space for the usual appliances, plus a cupboard housing a tank and a pantry cupboard located under the stairs. On the first floor you will find another reception space which then gives access to two bedrooms and the family bathroom. However, there are endless possibilities to amend, adapt and improve the property to suit an individual buyer subject to obtaining necessary planning consents.

OUTSIDE

The property sits centrally in a good sized plot, with parking and an area of lawn to the front. Patio areas wrap around the property creating an ideal space for al fresco dining and entertaining.

SERVICES

Mains electricity, water and drainage. Electric heating.
Broadband - Ultrafast broadband is available.
Mobile phone coverage - Network coverage is mostly limited indoors and good outdoors.
Dorset Council 01305 251010.
Council tax band: D.
EPC: C

SITUATION

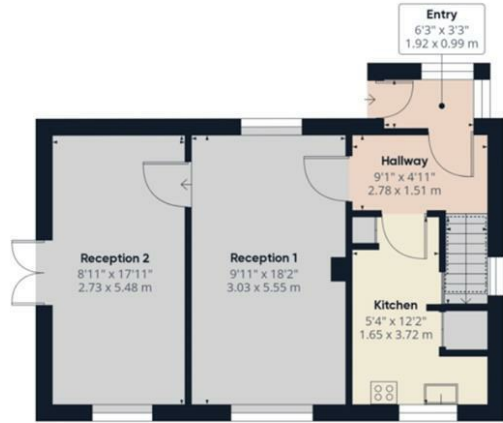
The house is positioned in the delightful village of Charmouth, set on the Jurassic coast, offering an outstanding natural beauty of its own with its award-winning beach. The local shops are a few minute's walk away, with the beach on the doorstep, a children's playground a 5-minute walk and two public houses.

DIRECTIONS

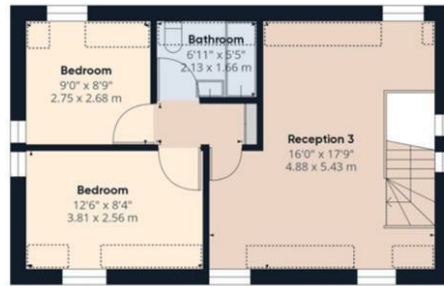
What3Words///crouches.random.happen.



Energy Efficiency Rating	
Current	Target
 88 31	88
England & Wales <small>EU Directive 2002/91/EC</small>	



Ground Floor



Floor 1

Approximate total area¹⁾

991.75 ft²
92.14 m²

Reduced headroom

83.63 ft²
7.77 m²

(1) Excluding balconies and terraces

Reduced headroom (below 1.5m/4.92ft)

While every attempt has been made to ensure accuracy, all measurements are approximate, not to scale. This floor plan is for illustrative purposes only.

GIRAFFE 360



Bridport/DME/060124



01308 422092

bridport@symondsandsampson.co.uk
Symonds & Sampson LLP
23, South Street,
Bridport, Dorset DT6 3NU



Important Notice: Symonds & Sampson LLP and their Clients give notice that: 1. They have no authority to make or give any representations or warranties in relation to the property. These particulars do not form part of any offer or contract and must not be relied upon as statements or representations of fact. 2. Any areas, measurements or distances are approximate. The text, photographs and plans are for guidance only and are not necessarily comprehensive. It should not be assumed that the properties have all necessary planning, building regulation or other consents and Symonds and Sampson LLP have not tested any services, equipment of facilities. 3. We have not made any investigation into the existence or otherwise of any issues concerning pollution of the land, air or water contamination and the purchaser is responsible for making his/her own enquiries in this regard. 4. The property is sold subject to and with the benefit of all existing wayleaves, easements and rights of way whether public or private, specifically mentioned or not. The vendors shall not be required to define any such rights, privileges or advantages.

SALES | LETTINGS | AUCTIONS | FARMS & LAND | COMMERCIAL | NEW HOMES | PLANNING & DEVELOPMENT