



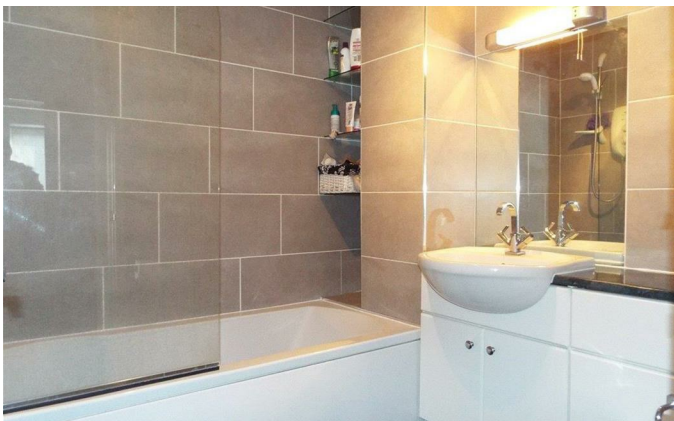
Haven Court, Rax Lane, Bridport, Dorset

Per Month  
**£800 Per Month**

**Symonds  
& Sampson**  
ESTABLISHED 1858

, Haven Court,  
Rax Lane, Bridport,  
Dorset, DT6 3JW

Viewing strictly by appointment  
Symonds & Sampson  
01308 422092



---

A two bedroom ground floor apartment with single garage and an off road parking space, enjoying a town centre location with kitchen, sitting room and bathroom. The property offers very well presented accommodation throughout and benefits from double glazing and electric central heating.

Available late October for an initial 6 month tenancy  
Rent - £800 per calendar month / £184 per week  
Holding Deposit - £184  
Security Deposit £923  
Council Tax Band - B  
EPC Band - E

#### Entrance Hall

Built-in cupboard housing hot water cylinder and electric boiler. Timber effect flooring. Doors lead off. (Intercom service).

#### Sitting Room

17'1" x 11'0"

#### Kitchen

10'8" x 6'9"

#### Bedroom 1

10'1" x 9'10"

#### Bedroom 2

9'4" into recess x 6'7"

#### Bathroom

#### Outside

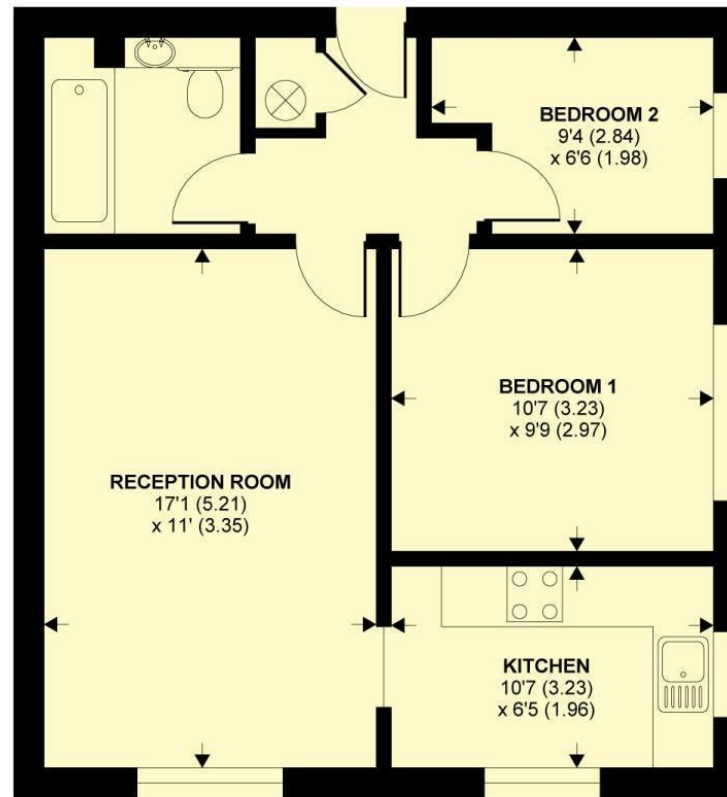
#### Situation

Bridport has a twice weekly market as well as regular farmers' markets and offers a range of quirky and artisan local shops as well as a vintage quarter. The town's amenities include restaurants and hotels, a cinema and leisure centre, supermarkets, a museum, a health centre and a number of excellent primary schools and secondary schooling. Bridport has good access to the famous Jurassic Coast from the pretty harbour of West Bay with its

assortment of pubs and restaurants and picturesque coastal path.

# Haven Court, Rax Lane, Bridport, DT6 3JW

APPROX. GROSS INTERNAL FLOOR AREA 536 SQ FT 49.7 SQ METRES



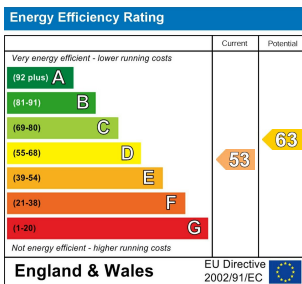
GROUND FLOOR

Whilst every attempt has been made to ensure the accuracy of the floor plan contained here, measurements of doors, windows and rooms are approximate and no responsibility is taken for any error, omission or misstatement. These plans are for representation purposes only as defined by RICS Code of Measuring Practice and should be used as such by any prospective purchaser. Specifically no guarantee is given on the total square footage of the property if quoted on this plan. Any figure given is for initial guidance only and should not be relied on as a basis of valuation.

Copyright nichecom.co.uk 2015 Produced for Symonds & Sampson REF : 65753

## Directions

From South Street, proceed to the square turning left onto West Street, followed by a right turn into Victoria Grove. Continue for a short distance and turn right where Haven Court will become visible on the right hand side.



Office/Neg/date



01308 422092  
Symonds & Sampson LLP  
Symonds & Sampson 23 South Street  
Bridport  
Dorset  
DT6 3NU  
bridport@symondsandsampson.co.uk

## IMPORTANT NOTICE: Symonds & Sampson LLP and their Clients give notice that:

1. They have no authority to make or give any representations or warranties in relation to the property. These particulars do not form part of any offer or contract and must not be relied upon as statements or representations of fact. 2. Any areas, measurements or distances are approximate. The text, photographs and plans are for guidance only and are not necessarily comprehensive. It should not be assumed that the property has all necessary Planning, Building Regulation or other consents, and Symonds & Sampson have not tested any services, equipment, or facilities.

