



East View, Old Taunton Road, Dalwood,

Per Calendar  
**£2,000 Per Calendar**  
Month

**Symonds  
& Sampson**  
ESTABLISHED 1858



East View, Old Taunton Road,  
, Dalwood,  
, EX13 7QD

Viewing strictly by appointment  
Symonds & Sampson  
01308 422092





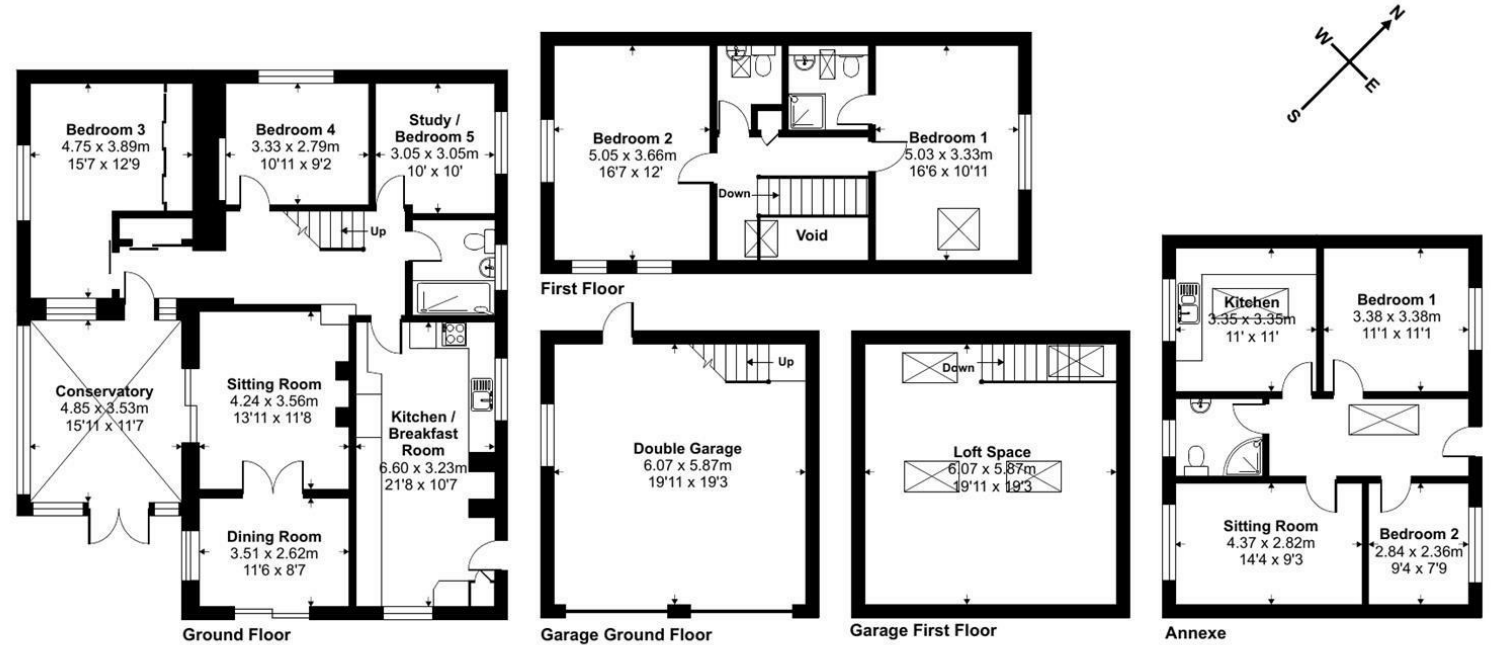
A detached five bedroom property surround by gardens and an detached annexe, comprising conservatory, entrance hall, living room, dining room, kitchen/breakfast room with either study or third bedroom two further bedrooms and the family shower room on the ground floor. First floor offers master bedroom with en-suite, second bedroom and separate cloakroom. The detached annexe has two bedrooms, kitchen, living room and bathroom. Ample parking and double garage.

Available mid May for an initial 12 month tenancy  
Rent - £2000 per calendar month / £461 per week  
Holding Deposit - £461  
Security Deposit £2307  
Council Tax Band - E  
EPC Band - D



Approximate Area = 1885 sq ft / 175.1 sq m (excludes void)  
 Garage = 772 sq ft / 71.7 sq m  
 Annexe = 615 sq ft / 57.1 sq m  
 Total = 3272 sq ft / 303.9 sq m  
 For identification only - Not to scale

Directions



Energy Efficiency Rating		Current	Potential
Very energy efficient - lower running costs			
(92 plus)	A		
(81-91)	B		
(69-80)	C		
(55-68)	D	62	
(39-54)	E		
(21-38)	F		
(1-20)	G		
Not energy efficient - higher running costs			
England & Wales		EU Directive 2002/91/EC	



Floor plan produced in accordance with RICS Property Measurement Standards incorporating International Property Measurement Standards (IPMS2 Residential). © nichecom 2023. Produced for Stags. REF: 968047

Office/Neg/date

**01308 422092**  
 Symonds & Sampson 23 South Street  
 Bridport  
 Dorset  
 DT6 3NU  
 ESTABLISHED 1858  
 bridport@symondsandsampson.co.uk

IMPORTANT NOTICE: Symonds & Sampson LLP and their Clients give notice that:

1. They have no authority to make or give any representations or warranties in relation to the property. These particulars do not form part of any offer or contract and must not be relied upon as statements or representations of fact.
2. Any areas, measurements or distances are approximate. The text, photographs and plans are for guidance only and are not necessarily comprehensive. It should not be assumed that the property has all necessary Planning, Building Regulation or other consents, and Symonds & Sampson have not tested any services, equipment, or facilities.

