



Symonds  
& Sampson

## 2 Stevens Farm

Martinstown, Dorchester, Dorset



# 2 Stevens Farm

Martinstown, Dorchester  
Dorset, DT2 9JR

A well-presented and spacious cottage featuring three double bedrooms, an attached garage and off-road parking.



- No forward chain
- Garage & off-road parking
  - Courtyard garden
- In good order throughout
- Characterful features
- Village location

Guide Price £365,000

Freehold

Dorchester Sales  
01305 261008  
[dorchester@symondsandsampson.co.uk](mailto:dorchester@symondsandsampson.co.uk)



## THE PROPERTY

This charming cottage has been well-maintained and offers light, bright accommodation, along with an attractive courtyard garden, garage and off-road parking.

## ACCOMMODATION

The accommodation in brief comprises of an entrance porch with ample built-in cupboards for coats and general storage. A generously sized sitting room features a ceiling beam, TV point and an attractive inglenook fireplace with a painted brick inset and raised hearth. A separate dining room offers space for a table and chairs, under-stairs storage and a second inglenook fireplace.

The kitchen is fitted with a range of cupboards and drawers, ample work surfaces, a sink and drainer and space for white goods. It also houses a floor-standing gas boiler and provides access to the rear porch.

Upstairs, there are three bedrooms. Bedroom 1 is a double room with fitted wardrobes. Bedroom 2 benefits from an en-suite with WC and wash basin, while Bedroom 3 also includes a fitted wardrobe. The shower room features a large walk-in shower, WC and a vanity basin.

The property benefits further from gas fired central heating, UPVC double glazing, parking with space for two cars and a garage with power and light. The garage leads to a glazed lean-to, providing a useful space for storing garden equipment and offering access to an additional courtyard.

## OUTSIDE

At the front of the cottage is a pretty, part-walled courtyard garden that is low maintenance and attractively landscaped with a small ornamental tree, shrubs, gravelled and paved areas, and space for potted plants and garden furniture. A smaller rear courtyard is also accessible via the rear porch and through the garage.

## SITUATION

The property is in the centre of the village of Martinstown, which is about three miles south-west of the county town of Dorchester. Local facilities include, a parish church, a village hall and a public house. A stream, the South Winterborne, runs through the length of the village.

Dorchester provides an excellent range of facilities, including mainline rail links to London Waterloo and Bristol, the Dorset County Hospital, a wide range of shops, restaurants and leisure facilities, including the vibrant Brewery Square development.

Sporting and recreational facilities in the area include golf at Dorchester Came Down and East Dorset Golf Clubs, tennis and squash at Dorchester Tennis & Squash Club. There are sailing and water sports along the nearby coastline, and riding and walking along the network of bridle and footpaths which cross the surrounding area.

## DIRECTIONS

What3words///pots.grapevine.convinced

## SERVICES

Mains water, drainage, electricity and gas connected.  
Gas fired central heating.

Broadband - Superfast speed available

Mobile - Likely coverage both indoors and outdoors on the O2 network. (<https://www.ofcom.org.uk>)

Council Tax Band: E (Dorset Council - 01305 251010)

## MATERIAL INFORMATION

The property falls within a conservation area.

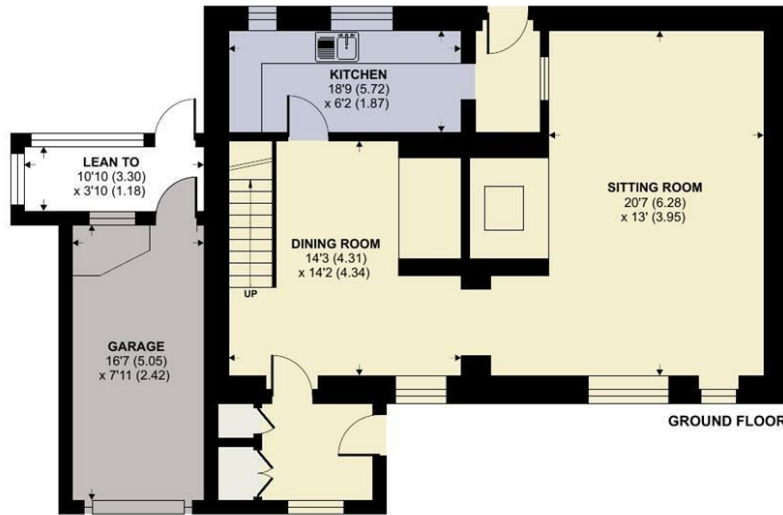




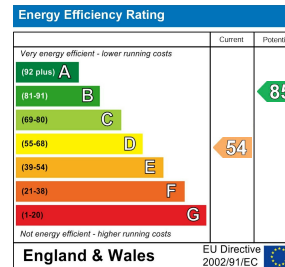
# Martinstown, Dorchester

Approximate Area = 1543 sq ft / 143.3 sq m (excludes lean to)

For identification only - Not to scale



Floor plan produced in accordance with RICS Property Measurement 2nd Edition, Incorporating International Property Measurement Standards (IPMS2 Residential). © nichecom 2025. Produced for Symonds & Sampson. REF: 1277900



Dorchester/SXP/29.04.2025



01305 261008

dorchester@symondsandsampson.co.uk  
Symonds & Sampson LLP  
9 Weymouth Avenue, Brewery Square,  
Dorchester, Dorset DT1 1QR



Important Notice: Symonds & Sampson LLP and their Clients give notice that: 1. They have no authority to make or give any representations or warranties in relation to the property. These particulars do not form part of any offer or contract and must not be relied upon as statements or representations of fact. 2. Any areas, measurements or distances are approximate. The text, photographs and plans are for guidance only and are not necessarily comprehensive. It should not be assumed that the properties have all necessary planning, building regulation or other consents and Symonds and Sampson LLP have not tested any services, equipment or facilities. 3. We have not made any investigation into the existence or otherwise of any issues concerning pollution of the land, air or water contamination and the purchaser is responsible for making his/her own enquiries in this regard. 4. The property is sold subject to and with the benefit of all existing wayleaves, easements and rights of way whether public or private, specifically mentioned or not. The vendors shall not be required to define any such rights, privileges or advantages.

**SALES | LETTINGS | AUCTIONS | FARMS & LAND | COMMERCIAL | NEW HOMES | PLANNING & DEVELOPMENT**