



Jasmine Cottage, Cattistock, Dorchester, Dorset

A charming two bedroom Grade II listed, period cottage in the heart of this most popular village, close to countryside walks and the village pub.

Guide Price
£350,000
Freehold

**Symonds
& Sampson**

ESTABLISHED 1858

Jasmine Cottage, Cattistock, Dorchester, Dorset, DT2 0JD

- Character Cottage
 - Grade II listed
- Two double bedrooms
 - Large rear garden
- Popular village of Cattistock
 - No forward chain

Viewing strictly by appointment
Symonds & Sampson
01305 261008





The Property

This pretty period cottage is within the conservation area of this popular village and within easy walking distance of the village pub, shop/post office and the beautiful surrounding countryside.

Jasmine Cottage has been lovingly maintained by the current owner, to create a well-appointed interior which mixes a fine blend of period features with modern fittings.

The ground floor accommodation comprises; entrance hall, sitting room with woodburning stove, kitchen and wc. Off the kitchen is a small lobby with access to the garden and larder.

Stairs rise to the first floor to two double bedrooms and modern bathroom suite.

Outside

To the rear of the cottage is a good size rear garden mainly laid to lawn, with mature shrubs, and has a patio abutting the house taking advantage of the afternoon/evening sun. Beyond is an area formerly used as a vegetable garden but not currently maintained.

Situation

Cattistock is within both a Conservation Area and Area of Outstanding Natural Beauty. Cattistock is a village of considerable character and has a village store/post office, village hall, children's playground, coffee shop, noted Victorian parish church and well regarded public house (The Fox and Hounds), cricket ground, tennis courts and football pitch.

Local facilities in Maiden Newton, about 1.5 miles, include shops, petrol station, primary school, doctor's surgery and rail station on the Dorchester/Yeovil to Bristol line. This is

one of the few villages in the area to have a wide range of facilities, including a public house and restaurant.

There are many more hostelrys in the surrounding area including the renowned Summer Lodge at Evershot.

The beautiful rolling countryside is well interspersed with footpaths and bridleways giving access to many areas of outstanding beauty.

The area is renowned for schooling. State schools include primary schools at Maiden Newton and Evershot and secondary school at Beaminster. Preparatory schools at Sherborne, Leweston, Sunninghill, Knighton House and Sandroyd. Public schools include Sherborne, Leweston, Canford, Bryanston, Milton Abbey and St Mary's Shaftesbury (girls).

Services

Mains electricity, water and drainage.
Electric heating.

Broadband - Superfast speed available
Mobile - It is reported that you are likely to get mobile coverage both indoors and outdoors (<https://www.ofcom.org.uk>)

Local Authority

Dorset Council
01305 251010 and www.dorsetcouncil.gov.uk

Council Tax Band: C

EPC: F

Directions

From Dorchester take the A37 northbound. About 4 miles beyond Grimstone turn left signed Cattistock Chalmington/Chantmarle. Proceed down this lane, bearing left at the two grass triangles, to Cattistock. Enter the village and after a short distance you will reach The Square and the property will be on your right hand side.
[What3Words///reclining.arrival.project](https://www.what3words.com/reclining.arrival.project)



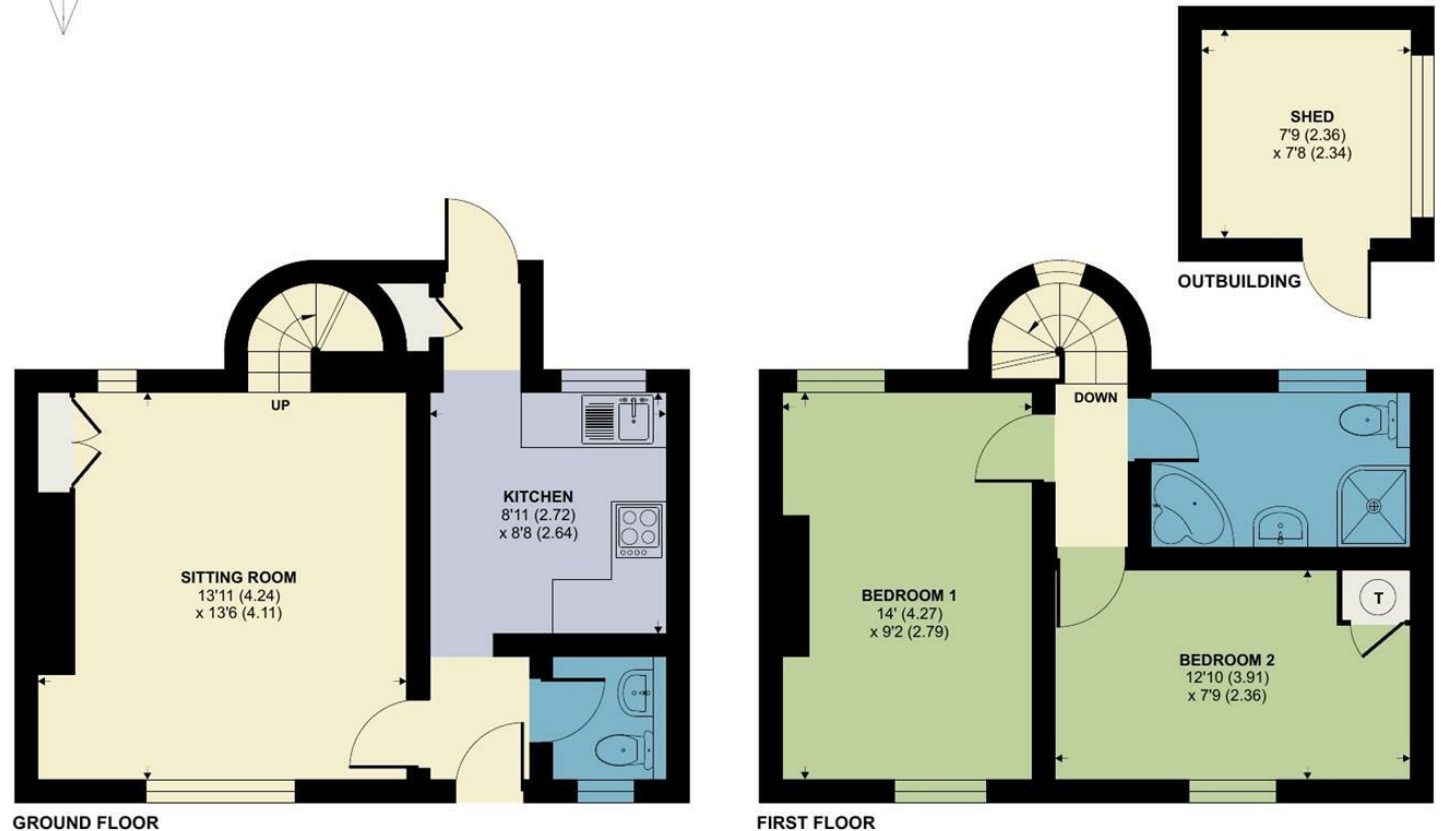
Cattistock, Dorchester, DT2

Approximate Area = 707 sq ft / 65.6 sq m

Outbuilding = 59 sq ft / 5.4 sq m

Total = 766 sq ft / 71 sq m

For identification only - Not to scale



Dorchester/ATR/08.07.2024



Floor plan produced in accordance with RICS Property Measurement Standards incorporating International Property Measurement Standards (IPMS2 Residential). © nichecom 2024. Produced for Symonds & Sampson. REF: 1146969



Symonds & Sampson
ESTABLISHED 1858
01305 261008
Symonds & Sampson 9 Weymouth Avenue
Brewery Square
Dorchester
Dorset
DT1 1QR
dorchester@symondsandsampson.co.uk

IMPORTANT NOTICE: Symonds & Sampson LLP and their Clients give notice that:

1. They have no authority to make or give any representations or warranties in relation to the property. These particulars do not form part of any offer or contract and must not be relied upon as statements or representations of fact. 2. Any areas, measurements or distances are approximate. The text, photographs and plans are for guidance only and are not necessarily comprehensive. It should not be assumed that the property has all necessary Planning, Building Regulation or other consents, and Symonds & Sampson have not tested any services, equipment, or facilities.

