

An aerial photograph of a residential property. In the foreground, a red brick house with a dark tiled roof is situated on a green lawn. To the left of the house, a paved road runs diagonally, with a dark blue car parked on it. A large, open green field occupies the middle ground. In the background, there are several other houses, some partially obscured by trees, and a dense line of trees on a hillside under a cloudy sky.

Symonds  
& Sampson

Brookside

School Road, Thorney Hill, Bransgore,



# Brookside

School Road  
Thorney Hill  
Bransgore  
BH23 8DS



3



1



2

- Over 1 acre paddock and garden with stables and excellent hacking out
- A detached three bedroom property with no forward chain set in 1.8 acres total
- Ample off road parking coupled with an attached garage
  - Room to extend if required (stpp) - Stables
  - Arguably one of the most sought after locations
  - On the edge of the New Forest National Park
  - Access to larger towns, villages and cities.

Guide Price £750,000

Freehold

Wimborne Sales  
01202 843190  
[wimborne@symondsandsampson.co.uk](mailto:wimborne@symondsandsampson.co.uk)





## THE PROPERTY

A stunning bungalow situated on the edge of the New Forest National Park with a wonderful private garden, a 1 acre paddock, stables and ready for immediate occupation. The bungalow is beautifully presented and enjoys modern living set in a highly desirable location. Set in a total of 1.896 acres.

## ACCOMMODATION

A bright entrance hallway leads to all principal rooms. The large sitting room has patio doors leading to the garden, there is a modern kitchen/breakfast rooms as well as three bedrooms a family bathroom as well as a separate W/C. The home offers 'turn key' accommodation.

## OUTSIDE

A driveway provides parking for a number of vehicles and access to the garage. The rear garden is a particular feature, a large patio abuts the rear of the property whilst the remainder is laid attractively to lawn with a selection of mature shrubs. To the far end, original stables have been converted to a workshop. The abutting paddocks are partly tree lined and enjoy a rural backdrop, benefiting from a separate gated entrance from the road.

## SITUATION

Wonderfully situated in a rural, yet convenient environment, abutting open forest land, betwixt the villages of Bransgore and Burley, which both offer a good range of shops and amenities, whilst the beautiful harbourside town of Christchurch and its neighbouring coastline is approximately 5 miles distant.

## DIRECTIONS

What three words /// palettes.patrol.already

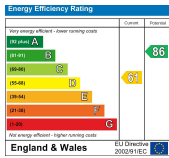
## SERVICES

Council Tax Band - E  
EPC Rating - D  
All mains services

## MATERIAL INFORMATION

Ultrafast broadband available  
Limited mobile phone signal depending on provider  
Total 1.896 acres of land





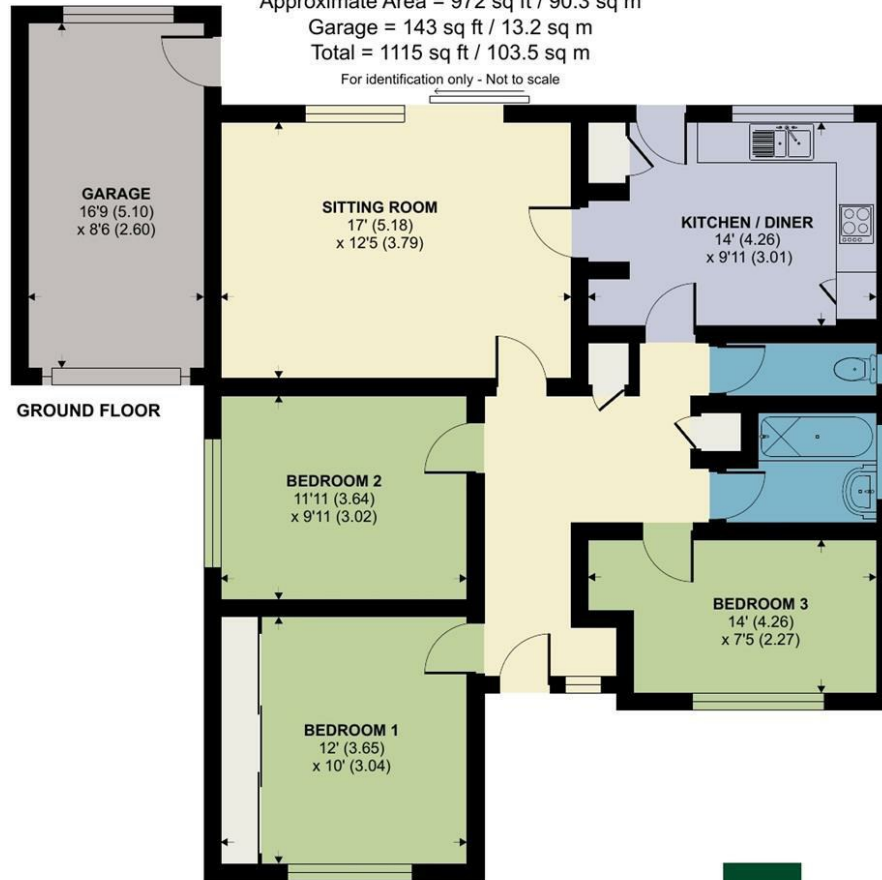
## School Road, Thorney Hill, Bransgore, Christchurch

Approximate Area = 972 sq ft / 90.3 sq m

Garage = 143 sq ft / 13.2 sq m

Total = 1115 sq ft / 103.5 sq m

For identification only - Not to scale



Floor plan produced in accordance with RICS Property Measurement 2nd Edition, Incorporating International Property Measurement Standards (IPMS2 Residential). © nichecom 2025. Produced for Symonds & Sampson. REF: 1230591



WIM/NW/JAN25



01202 843190

wimborne@symondsandsampson.co.uk  
Symonds & Sampson LLP  
5, West Street,  
Wimborne, Dorset BH21 1JN



Important Notice: Symonds & Sampson LLP and their Clients give notice that: 1. They have no authority to make or give any representations or warranties in relation to the property. These particulars do not form part of any offer or contract and must not be relied upon as statements or representations of fact. 2. Any areas, measurements or distances are approximate. The text, photographs and plans are for guidance only and are not necessarily comprehensive. It should not be assumed that the properties have all necessary planning, building regulation or other consents and Symonds and Sampson LLP have not tested any services, equipment or facilities. 3. We have not made any investigation into the existence or otherwise of any issues concerning pollution of the land, air or water contamination and the purchaser is responsible for making his/her own enquiries in this regard. 4. The property is sold subject to and with the benefit of all existing wayleaves, easements and rights of way whether public or private, specifically mentioned or not. The vendors shall not be required to define any such rights, privileges or advantages.

**SALES | LETTINGS | AUCTIONS | FARMS & LAND | COMMERCIAL | NEW HOMES | PLANNING & DEVELOPMENT**