



Prospect Place, Grays

£399,995



- Prime Grays convenience without the hassle
- Clever layout that just flows
- Top-floor sleep sanctuary
- Two full bathrooms = zero queuing
- Storage space that finally tames the clutter beast
- Ground-floor double bedroom with endless possibilities
- Guest-friendly WC where it actually makes sense
- Kitchen/diner made for real life (and real appetites)
- Lower-ground living space that does the most
- Three floors of pure lifestyle upgrade



Say hello to your new chapter at Prospect Place — a brand-new mid-terrace home that delivers three floors of space, style and “oh wow, this is nice” vibes from the moment you step inside.

Let's start downstairs on the lower ground floor, where the real living happens. The full-width lounge opens straight out to the garden, making it the perfect setting for everything from summer BBQs to “don't talk to me, I'm watching my series” evenings. At the front, the stylish kitchen/diner is built for big breakfasts, late-night snacks and all the chaotic cooking moments in between. A handy WC down here means no dashing upstairs mid-movie. On the ground floor, you'll find a generous double bedroom that's ready to become whatever you need — guest haven, teenager hideout, Zoom-friendly office or all of the above. There's a sleek modern bathroom plus a very welcome storage room, because life comes with stuff... lots of it. Head up to the top floor and discover two more comfortable double bedrooms and an additional bathroom, keeping the morning rush civilised and the queue for the shower blissfully short. Every room across the home feels bright, easy to furnish and genuinely practical — no weird corners, no wasted space. Outside, the private garden gives you your own slice of fresh air — perfect for slow mornings, energetic kids or a bit of outdoor yoga (even if it's mostly just for the aesthetic). Parking is included too, because hunting for a space at the end of a long day is nobody's idea of fun. All of this sits right in the heart of Grays — just a short walk from the station, high street shops, cafés and all the essentials. Commuters, families and anyone who just loves convenience... this one's built for you. Brand new. Chain-free. Move-in ready. A home that looks good, works hard and makes life a whole lot easier.

Grays is a well-connected riverside town in the borough of Thurrock, offering an ideal balance between convenient commuting and relaxed suburban living. Situated on the north bank of the River Thames, the town benefits from excellent transport links, a wide range of local amenities and ongoing investment as part of the Thames Gateway regeneration area.



Colubrid.co.uk

THE SMALL PRINT:

Council Tax Band: E
Local Authority: Thurrock

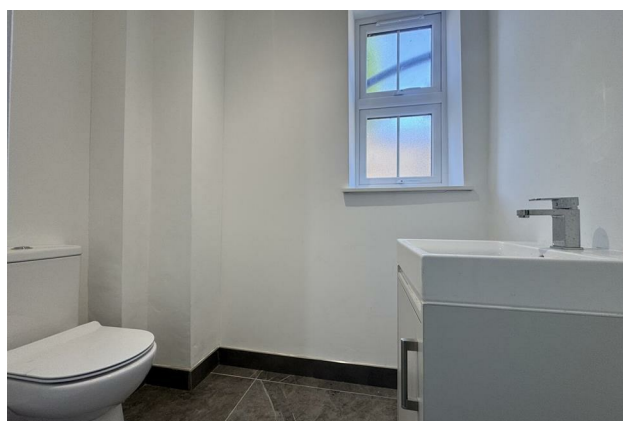
We've done our homework, but we aren't fortune tellers. We haven't poked the boiler, flicked the switches, or tested every light bulb. Nothing here counts as a contract or statement of fact—get your solicitor to check all the serious stuff, like tenure, parking, planning permission, building regs, and all that jazz!

Measurements? Guides only. Floorplans? Handy, but not perfectly to scale. Travelling far? Call first—clarification is free, petrol is not.

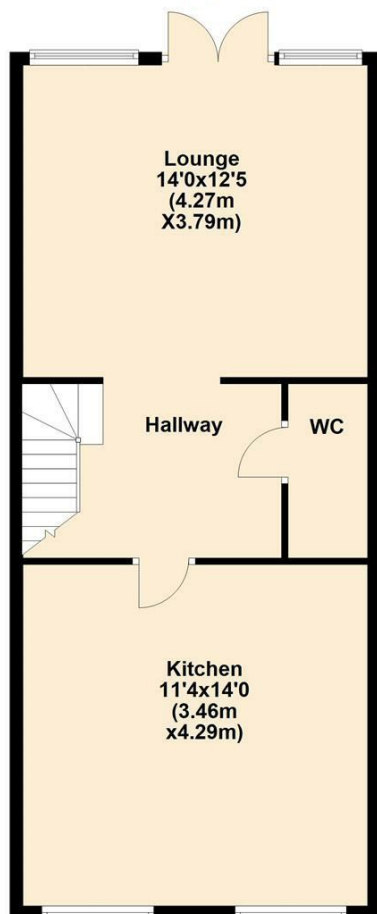
We may receive a referral fee if you choose to use third-party services we recommend, such as conveyancers, mortgage advisers, or EPC providers, but you are under no obligation to do so.

AML Checks - Law says we must run one. £80 + VAT per buyer. Tiny toll, big compliance.

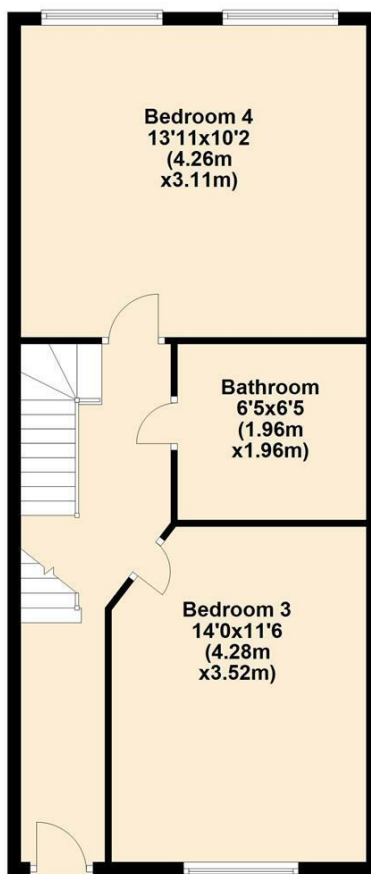
Buyer Reservation Fee - Offer accepted? Pay a reservation fee (min £1,000) to lock it in. VIP pass to the property, protects against gazumping. Complete the sale? Fee refunded. Things go sideways? Sometimes non-refundable. Head to our website for full details – or skip the scrolling and just call.



Lower Ground Floor



Ground Floor



First Floor

