

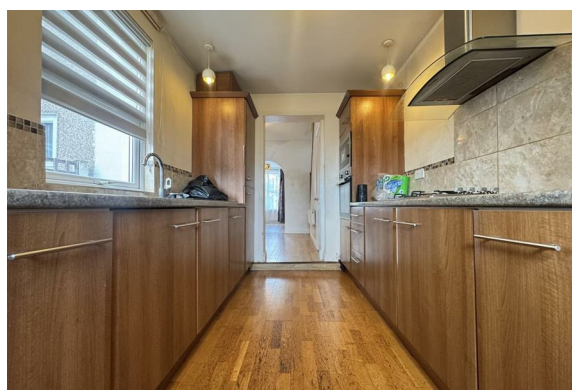
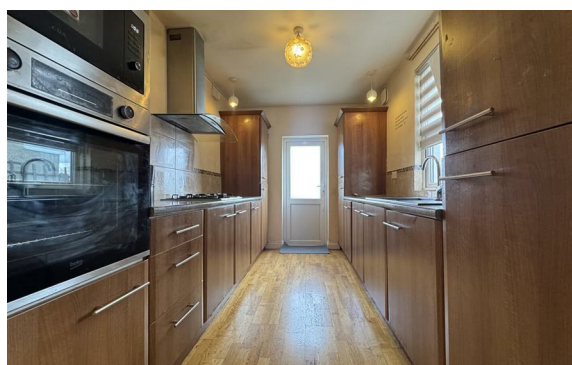


Whitehall Lane, Grays

Guide Price £290,000



- Sold with no onward chain
- Highly desirable location – minutes from Grays Train Station and town centre
- Bright and airy lounge with ample room for relaxing or entertaining
- Dining room, ideal for family meals or hosting guests
- Well-appointed kitchen with scope to personalise
- Two generous double bedrooms on the first floor
- Good size family bathroom
- Excellent rear garden, ideal for outdoor entertaining or family enjoyment



GUIDE PRICE £280,000 - £300,000.

Positioned on the sought-after Whitehall Lane, this well-proportioned two-bedroom home presents an excellent opportunity for buyers looking for generous living space, a convenient location, and the chance to move in without delay thanks to the benefit of no onward chain.

As you step inside, you are welcomed by a spacious entrance hallway that immediately sets the tone for the size and comfort this home has to offer. The ground floor boasts a bright and airy lounge, offering a relaxing space to unwind with plenty of natural light flowing through. Adjacent to the lounge is a dining room, ideal for family meals, entertaining guests, or even flexible use as a study or play area. To the rear of the home sits a well-sized kitchen, providing ample storage and worktop space, along with direct access to the rear garden — perfect for those who enjoy cooking or entertaining outdoors.

The first floor offers two generously sized bedrooms, both filled with light and offering ample space for furnishings and storage. A well-appointed family bathroom completes the first floor, fitted with a white suite and featuring natural light through a rear window.

Externally, the property enjoys a good-sized rear garden, providing a fantastic outdoor space that's ideal for summer barbecues, family playtime, or simply enjoying some quiet time in the open air. The garden offers scope for personalisation or landscaping, making it a great asset for buyers with a creative touch.

Whitehall Lane is superbly located just a short walk from both Grays train station — offering direct access into London — and the vibrant town centre, which features a wide range of shops, restaurants, schools and local amenities. This makes the home especially appealing for commuters, families, or those simply seeking everyday convenience.

With its spacious interior, excellent layout, and enviable location, this three-bedroom home represents a wonderful opportunity to secure a proper

Enter the property via door to front.

Entrance hall gives access to accommodation.

Lounge 13'4 max x 12'8 (4.06m x 3.86m) Bay fronted double glazed window.

Open plan dining room 12'8 max x 10'6 (3.86m x 3.20m) double glazed window to rear. Storage cupboard.

Open plan kitchen 12'7 x 7'8 (3.83m x 2.33m) External door to rear. Double glazed window. Range of wall and base mounted units with matching storage drawers.. Work surfaces housing sink drainer. Oven, four ringed gas hob, extractor hood, microwave, washing machine and fridge/freezer to remain.

First floor landing is home to two bedrooms and spacious family bathroom.

Bedroom one 12'8 max x 10'10 (3.86m x 3.30m) two double glazed windows to front. Fitted wardrobes.

Bedroom two 11'9 x 7'7 (3.58m x 2.31m) double glazed window to rear.

Spacious bathroom comprises panel bath fitted with shower and glass splash screen door. Wash hand basin and WC. part tiling to walls. Heated towel rail.

Externally the property has a good size rear garden. Rear access gate, shed to remain and outside water tap. Remaining garden is lawned.

Council Tax Band: B

Local Authority: Thurrock

We endeavour to make our sales particulars accurate and reliable, however, they do not constitute or form part of an offer or any contract and none is to be relied upon as statements of representation or fact. All verification of property details should be made by your legal representative for the purchase of the property to ensure that all information including but not limited to; Tenure, lease information, parking facilities, planning permission and building regulations is accurate and correct.

The services, systems and appliances listed in this specification have not been tested by us and no guarantee as to their operating ability or efficiency is given. All measurements have been taken as guide to prospective buyers only and are not precise.

Floorplans where included may not be to scale and accuracy is not guaranteed. If you require clarification or further information on any points, please contact us, especially if you are travelling some distance to view.

AML Checks - All buyers interested in purchasing a property through us are required to complete an Anti-Money Laundering (AML) check. A non-refundable fee of £60.00 plus VAT per buyer in the transaction will apply. This fee must be paid before proceeding with the purchase.



Colubrid.co.uk

Grays is the largest town in the borough and authority of Thurrock in Essex. The town, on the north bank of the River Thames, is approximately 20 miles to the east of central London, and 2 miles east of the M25 motorway. The Town Centre offers an array of shops, indoor shopping centre, pubs and restaurants. Grays railway station is on the C2C line with direct links into Fenchurch Street via Upminster and Barking. Or if shopping is not ideal for you, then why not visit Grays Beach. A13 road links nearby giving easy access to London.

