



Sabina Road, Chadwell St Mary

Guide Price £350,000



- A beautifully presented and fantastic size two bedroom family home
- Constructed in 2022 with all the benefits of a new build home
- Inviting entrance hallway with feature glass staircase
- Ground floor wc
- Lovely size open plan lounge/kitchen/diner with integrated appliances
- Stunning family bathroom
- Two good size bedrooms
- Study ideal for working from home
- Wonderful size rear garden
- Front garden



GUIDE PRICE £350,000 - £400,000.

Nestled on the charming Sabina Road in Chadwell St Mary, this beautifully presented end terrace house is a remarkable find for families seeking modern living. Constructed in 2022, this property boasts all the advantages of a new build, ensuring a fresh and contemporary atmosphere throughout.

As you enter, you are greeted by an inviting entrance hallway that features a striking glass staircase, setting the tone for the elegance that follows. The ground floor offers a convenient WC and an impressive L-shaped open plan lounge, kitchen, and dining area. This spacious layout is perfect for both entertaining guests and enjoying family time, complete with integrated appliances that enhance the functionality of the kitchen.

Moving to the first floor, you will discover a stunning family bathroom alongside two generously sized bedrooms, providing ample space for relaxation and rest. Additionally, a study area offers a perfect area for work or study, catering to the needs of modern living.

The property is further complemented by a wonderful size rear garden, ideal for outdoor activities, gardening, or simply unwinding in the fresh air. This home is not just a place to live; it is a sanctuary that combines comfort, style, and practicality.

In summary, this two-bedroom family home on Sabina Road is a fantastic opportunity for those looking to embrace a contemporary lifestyle in a welcoming community. With its excellent living space and modern features, it is sure to impress.

Impressive entrance hall commences with centre feature staircase with glass balustrade to first floor accommodation. Storage cupboard. Wooden style flooring. Access is given to ground floor cloakroom/wc. Beautifully presented lounge/open plan kitchen/diner 24'3 max x 19'4 max overlooks the front aspect and gives access to rear garden via French double glazed doors. Continuation of flooring. Smooth ceiling with spotlighting. Kitchen offers a range of high gloss wall and base mounted units. Complimentary worksurfaces with matching upstands incorporating breakfast bar seating. Sink drainer with swan neck mixer tap. Electric hob and oven. Double glazed window. Smooth ceiling, spotlighting.

First floor landing is home to two well proportioned bedrooms and family bathroom. Bedroom one 11'0 x 10'1max double glazed window to rear. Study 5'6 x 3'9 double glazed window to rear. Bedroom two 11'1 x 8'1max. Double glazed window to front. Bathroom comprises P-shaped bath fitted with shower and glass splash screen door. Vanity wash hand basin and low level wc. Tiling to walls. Tiled flooring. Obscure double glazed window. Heated towel rail.

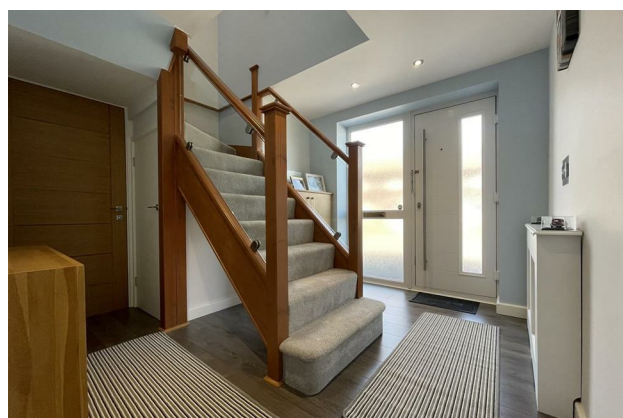
Externally the property has a lovely size rear garden. Commencing with patio seating area. Remaining garden has a well presented manicured lawn.

Council Tax Band: C
Local Authority: Thurrock

Disclaimer: Council Tax is given as a guide only and should be checked and confirmed before exchange of contracts. We endeavour to make our sales particulars accurate and reliable, however, they do not constitute or form part of an offer or any contract and none is to be relied upon as statements of representation or fact. All verification of property details should be made by your legal representative for the purchase of the property to ensure that all information including but not limited to; Tenure, lease information, parking facilities, planning permission, and building regulations is accurate and correct.

The services, systems and appliances listed in this specification have not been tested by us and no guarantee as to their operating ability or efficiency is given. All measurements have been taken as guide to prospective buyers only and are not precise.

Floorplans where included may not be to scale and accuracy is not guaranteed. If you require clarification or further information on any points, please contact us, especially if you are travelling some distance to view.

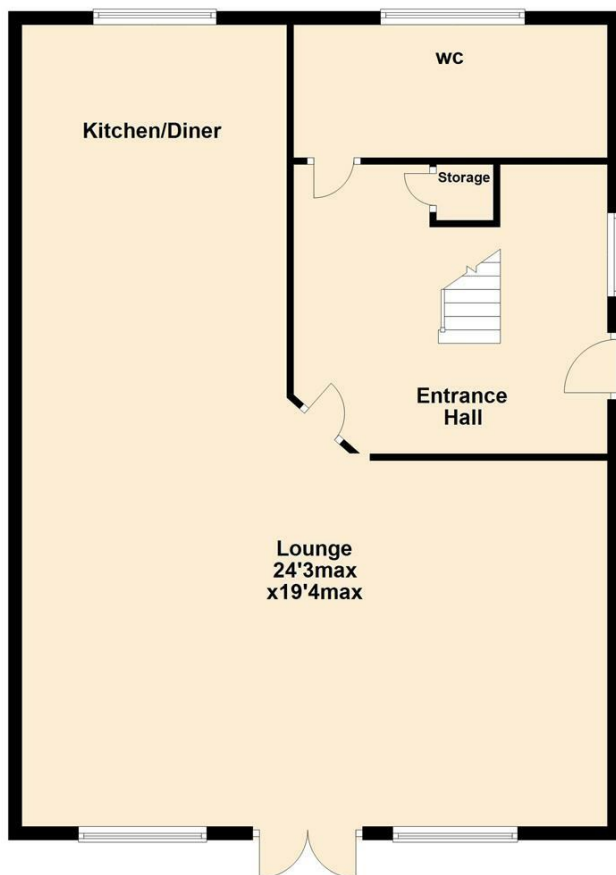


Local Life

Chadwell St Mary is an area of the unitary authority of Thurrock in Essex. It is one of the traditional (Church of England) parishes in Thurrock and a former civil parish. Grays is 2 miles to the west and 1 mile to the south is Tilbury. The area is sometimes referred to simply as Chadwell, particularly before the 19th century.



Ground Floor



First Floor

