



## Tallis Close, Stanford-le-Hope

£300,000



- No onward chain
- A detached two bedroom bungalow offering great size living space throughout
- Spacious lounge/diner
- Nice size kitchen
- Family bathroom
- Two good size bedrooms
- Cul-de-sac location
- Garage in block with parking in front
- Ideally located just 0.6 miles from Stanford-le-Hope train station. Commuting distance to Basildon hospital/train station
- Close proximity to Stanford-le-Hope train station



Welcome to this charming property located in the desirable Tallis Close, Stanford-le-Hope. This fully detached two-bedroom bungalow is a rare find, offering a comfortable and convenient living space with no onward chain.

Upon entering, you are greeted by a welcoming entrance hallway that leads you to the lovely size lounge/diner, perfect for relaxing or entertaining guests. The property boasts two cosy bedrooms, ideal for a small family or as a guest room/home office combination.

The kitchen is well-equipped, providing a functional space for preparing delicious meals. The bathroom offers convenience and comfort, completing the layout of this delightful bungalow.

Outside, you will find a nice size garden, perfect for enjoying the outdoors during warmer months or for those with green fingers looking to create their own oasis. Additionally, there is a garage in the block with parking, ensuring that your vehicle is safely accommodated.

Conveniently located within 0.6 miles of Stanford-le-Hope train station and within close proximity of town centre, this property holds a prime position.

Don't miss out on the opportunity to own this lovely property in a peaceful location. Whether you are looking for a cozy home to settle down or a tranquil retreat away from the hustle and bustle, this bungalow offers the perfect blend of comfort and convenience. Contact us today to arrange a viewing and make this charming bungalow your new home!

Entrance door to front.

Large lounge/diner 17'1 max x 16'6 max. Double glazed window to front. Coved ceiling. Wooden style flooring.

Spacious bathroom comprises, white panel bath fitted with shower/mixer tap wash hand basin and low level WC.

Storage cupboard. Obscure double glazed window. Part tiling to walls. Tiled flooring. Obscure double glazed window.

Bedroom one 11'2 x 9'10 double glazed window to front. Fitted sliding door wardrobe.

Bedroom two 9'10 x 6'11 double glazed window to front.

Kitchen 10'4 x 7'9 double glazed window. External door. Range of wall and base mounted units with matching storage drawers. Work surfaces housing sink drainer. Oven, hob and extractor hood to remain.

Externally the property has a nice size paved rear garden.

Gated lawned front garden.

Council Tax Band: B

Local Authority: Thurrock

Disclaimer: Council Tax is given as a guide only and should be checked and confirmed before exchange of contracts. We endeavor to make our sales particulars accurate and reliable, however, they do not constitute or form part of an offer or any contract and none is to be relied upon as statements of representation or fact. All verification of property details should be made by your legal representative for the purchase of the property to ensure that all information including but not limited to; Tenure, lease information, parking facilities, planning permission, and building regulations is accurate and correct.

The services, systems and appliances listed in this specification have not been tested by us and no guarantee as to their operating ability or efficiency is given. All measurements have been taken as guide to prospective buyers only and are not precise.

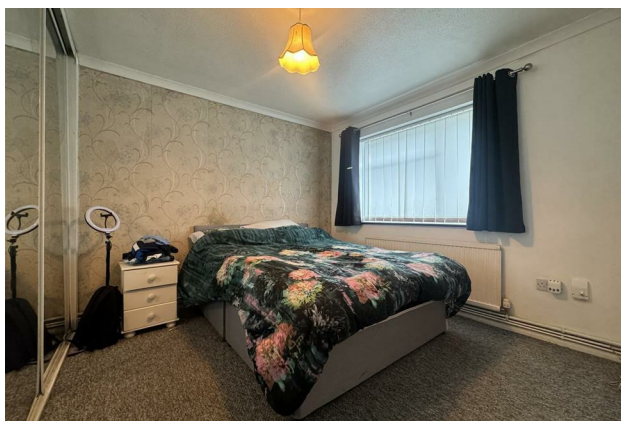
Floorplans where included may not be to scale and accuracy is not guaranteed. If you require clarification or further information on any points, please contact us, especially if you are travelling some distance to view.



# Local Life

STANFORD-LE-HOPE is a small village between Basildon and Grays. The name arrives from a bridge crossing the rivulet on the site of the ancient stone ford, which gave the village, it's name Stanford-le-Hope.

Stanford Le Hope railway station is on the London, Tilbury and Southend line taking approximately 45 minutes to Fenchurch Street. Why not enjoy some time looking around the Town Centre, enjoy a meal at one of the many pubs and restaurants? Easy access to A13 road links to Basildon, Benfleet and Wickford



Floor Plan



