

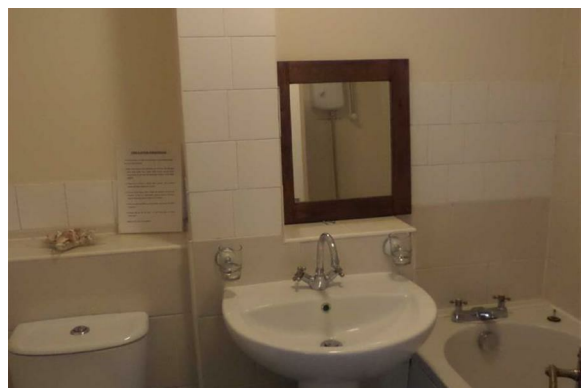


**Queen Mary Court, Queen Mary Avenue, East
Tilbury**

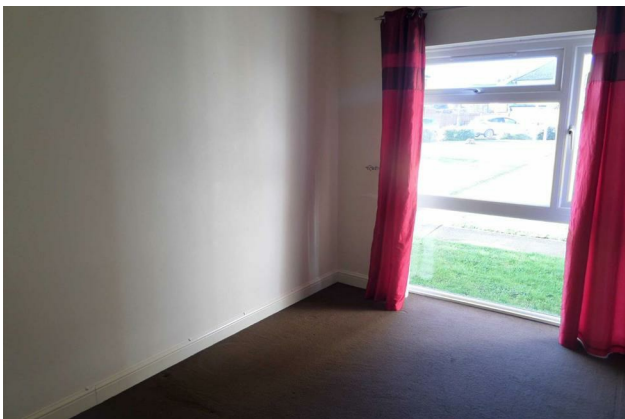
£1,100 Per Calendar
Month



- 2 Bed ground floor flat
- Lounge
- Kitchen
- Bathroom
- Communal garden
- Communal parking
- Available End JANUARY 2018
- Call Fresh Property to view 01268522290



Two bedroom ground floor flat. Close to local shops and train station. Available end of September



Colubrid.co.uk

Local Life

Two bedroom ground floor flat. Close to local shops and train station. Available end of September. Disclaimer. Photos were taken prior to current tenancy

