



Parker Avenue, Tilbury

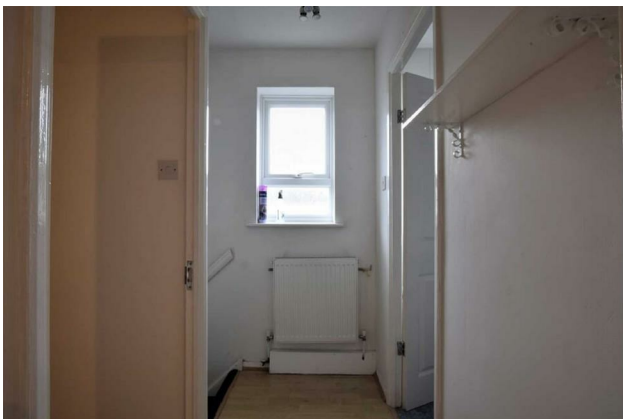
£1,100 Per Calendar Month



**Available end of July Located with popular residential area.
Accommodation comprises, double bedroom, lounge/diner, kitchen
and three piece modern bathroom. Driveway parking to front.**

Disclaimer:

Please be aware photographs seen, have been taken pre tenancy and may not reflect the current properties position.



Colubrid.co.uk

Local Life

Tilbury is a port town in the borough of Thurrock, Essex. The present town was established as separate settlement in the late 19th century, on land that was mainly part of Chadwell St Mary. It contains a 16th century fort and an ancient cross-river ferry. Tilbury is part of the Port of London with a major deep-water port which contributes to the local economy. Situated 24 miles east of central London and 23 miles southwest of Southend-on-Sea, it is also the southernmost point in Essex. Accessible to A13/M25 road links.



