



Nightingales, Langdon Hills, Basildon

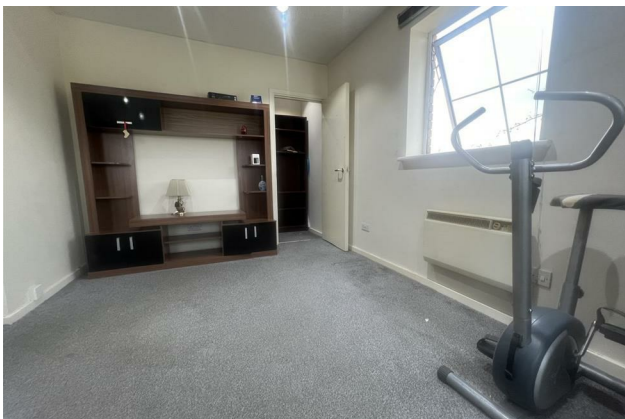
£1,300 Per Calendar
Month



- Two bedroom maisonette with own front door
- Available now
- Found in sought after residential area
- Nice size lounge and kitchen
- Two well proportioned bedrooms
- Three piece family bathroom



AVAILABLE NOW!!! -Colubrid Estate Agents are very pleased to welcome this very spacious two bedroom maisonette, available April 2024. Found in sought after residential area, close to local amenities. Accommodation comprises, own entrance door with stairs to accommodation. Lovely size lounge and kitchen, two well proportioned bedrooms and family three piece bathroom.



Colubrid.co.uk

Local Life

Basildon is a large market town in the county of Essex. Found only 26 miles East of Central London the town provides great access to The Capital via the C2C rail link to Fenchurch Street. Within Essex Basildon is located to the south of the City of Chelmsford and 10 miles west of Southend-on-Sea. Nearby towns include Billericay to the north-west, Wickford to the north-east and Benfleet to the south-east. Founded as a new town after World War II in 1948, to accommodate the London population overspill from the conglomeration of four small villages, namely Pitsea, Laindon, Basildon and Vange. Basildon also has access to London via road, on the A127 and A13. Basildon is a growing area providing a huge array of shops, schools, sports venue and entertainment facilities.

