



## Campion Close, Rush Green, Romford

£1,800 Per Calendar  
Month



- Available June 2024
- Two bedroom end of terrace house
- Entrance hall, ground floor wc, kitchen, lounge/diner and sitting room
- Three well proportioned bedrooms
- Family bathroom
- Rear garden
- Allocated parking space plus visitor parking available



## **AVAILABLE JULY 2024 !!**

**Two bedroom end of terrace house found within popular location. Accommodation boasts, entrance hall, ground floor cloakroom/WC, lounge/diner and sitting room. First floor landing is home to two bedrooms and family bathroom. Externally the property has a good size rear garden, allocated parking plus visitor parking space.**

Entrance hall commences with stairs leading to first floor accommodation. Access is given to cloakroom/WC.

Kitchen 9'9 x 5'5 double glazed window to front. Wall and base mounted units with matching storage drawers. Work surfaces housing sink drainer with swan neck mixer tap. Gas hob, oven and extractor hood. Space for other appliances.

Lounge/diner 16'1 x 11'9 gives access to sitting room via French double glazed doors. Under stairs storage cupboard.

Sitting Room 9'8 x 7'5 overlooks and gives access to rear garden. Skylight window.

First floor landing is home to two well proportioned bedrooms and three piece bathroom.

Bedroom one 12'0 x 10'5 max. Double glazed window.

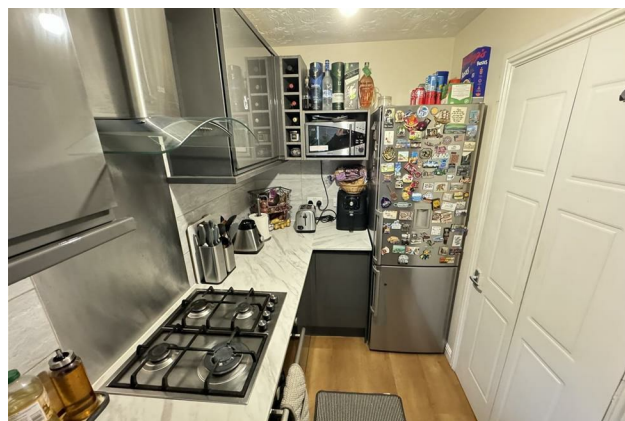
Bedroom two 11'9 x 10'2 max. Double glazed window. Loft access plus fitted wardrobes.

Bathroom comprises white panel bath fitted with shower/mixer tap. Wash hand basin and low level WC. Tiling to walls. Tiled flooring.

Rear garden commences with patio seating area, side access gate and outside water tap.

Remaining garden is lawned.

Allocated parking space plus visitor parking available.



## Local Life

Romford is a large town in East London and the administrative centre of the London Borough of Havering. It is located 14.1 miles northeast of Charing Cross and offers easy access to A13/M25 road links. Romford market is one of the oldest markets, ideal for shopping or grab a bite to eat in the fabulous indoor shopping centre. Queen's Hospital was built on the site of the former Oldchurch Park, a short distance south of the town centre.



