

Exceptional two bedroom apartment
situated on the second floor.

Richmond Buildings, W1D

 2  2  1

Guide £1,200 p/w, plus fees may apply



Exceptional two bedroom apartment
situated on the second floor.

Richmond Buildings, W1D

 2  2  1

Guide £1,200 p/w, plus fees may apply



Exceptional two bedroom apartment situated on the second floor.

Richmond Buildings, W1D

 2  2  1

Guide £1,200 p/w, plus fees may apply



About this property

A fantastic two bedroom apartment offering stunning interiors, a spacious open plan kitchen reception room, two double bedrooms and two modern bathrooms. The flat has been designed to the highest specification with air conditioning and underfloor heating.

Richmond Buildings is located in Soho, one of London's most desirable and exciting areas, bustling with restaurants, cafes, theatres and tremendous public spaces.

Local transport connections include:

Central, Victoria, Piccadilly & Bakerloo Lines, Oxford Circus: (approx) 0.5 miles. Northern, Elizabeth & Central Lines Tottenham Court Road (approx) 0.3 miles.

The development is located adjacent to the Soho Hotel and will have full use of the facilities of the hotel including the gym, spa and full concierge services all included in the rent. At a further cost, the services of cleaning, laundry and room service are also available from the hotel.



Exceptional two bedroom apartment situated on the second floor.

Richmond Buildings, W1D

 2

 2

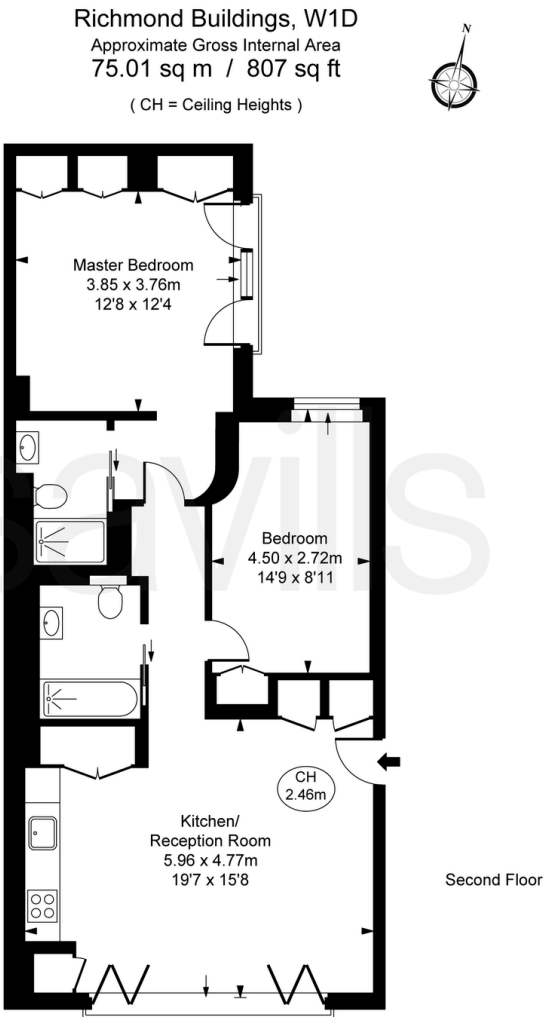
 1

Guide £1,200 p/w, plus fees may apply



Plans

Approx. gross internal floor area
807 sq ft



This plan is not to scale. It is for guidance and not for valuation purposes.
All measurements and areas are approximate only, and have been prepared in accordance with the current edition of the RICS Code of Measuring Practice.
© Fulham Performance

Exceptional two bedroom apartment
situated on the second floor.

Richmond Buildings, W1D

2 2 1

Guide £1,200 p/w, plus fees may apply



Key Information

Local Authority

Westminster

Council Tax

Band = F

Furnishing

Furnished

Available From

26/06/2025

Additional Payments

Deposit: £7,200 (6 weeks)

Holding Deposit: £1,200.00 (1 week)

Rent must be paid
monthly in advance

Services & Additional Information

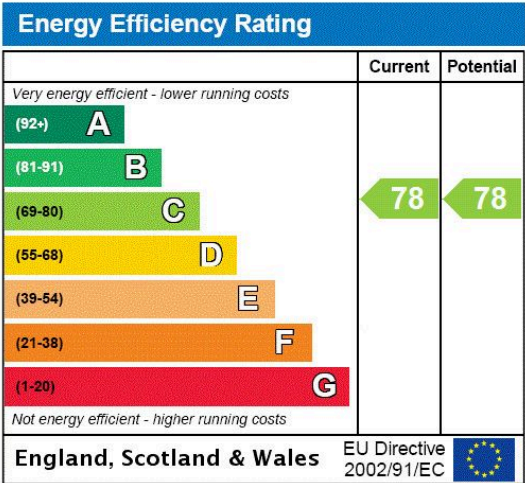
Lift access

Concierge service

EPC

EPC Rating = C

PROPERTY



Exceptional two bedroom apartment
situated on the second floor.

Richmond Buildings, W1D



2



2



1

Guide £1,200 p/w, plus fees may apply



Enquire



Ellie Day

Mayfair & St James's Lettings

+44(0) 20 7578 5117

ellie.day@savills.com

More Information



View on website



View Digital Brochure



Property Search

Viewing strictly by appointment

Published: May 2025

Property Ref: LHL170686

powered by
FluxPro

Important Notice: Savills, their clients and any joint agents give notice that: 1. They are not authorised to make or give any representations or warranties in relation to the property either here or elsewhere, either on their own behalf or on behalf of their client or otherwise. They assume no responsibility for any statement that may be made in these particulars. These particulars do not form part of any offer or contract and must not be relied upon as statements or representations of fact. 2. Any areas, measurements or distances are approximate. The text, images and plans are for guidance only and are not necessarily comprehensive. It should not be assumed that the property has all necessary planning, building regulation or other consents and Savills have not tested any services, equipment or facilities. Prospective tenants must satisfy themselves by inspection or otherwise. Please note that the local area may be affected by aircraft noise, you should make your own enquiries regarding any noise within the area before you make any offer.

*There are different rules and fees for different tenancy types. For details of our fees and charges please go to Savills.co.uk/tenant-fees. For more detailed information read our applicant guide at savills.co.uk/applicant-guide.