



A first floor South facing one bedroom apartment in this secure, gated, age exclusive development, conveniently located in the heart of Topsham. Secure parking, visitors' suite, 24-hour emergency call system, estate manager and landscaped gardens are just a few of the benefits.

Parkfield Road
Exeter £285,000

East of 

Parkfield Road Exeter £285,000

Age exclusive apartment | One bedroom | Sitting room, Kitchen, Shower room | Views over the nearby playpark and tennis courts | Convenient level town centre location | Lift Access | secure, gated complex | 24 hour emergency call system | Communal Gardens and unallocated parking | Close to bowling green and swimming pool

ENTRANCE HALL

Lift from ground floor to first floor communal hallway, front door opens into entrance hall with intercom entry system and 'pull alarm', wall heater, light fitting and large storage cupboard with water heater and shelving.

SITTING ROOM

A light room with southerly views over the playpark and tennis courts. Decorative fire place with electric fire, two heaters, ceiling and wall lighting door to kitchen.

KITCHEN

Well appointed fitted kitchen with eye level oven, hob with extractor, integral fridge freezer, sink and part tiled walls. Window with southerly aspect.

BEDROOM

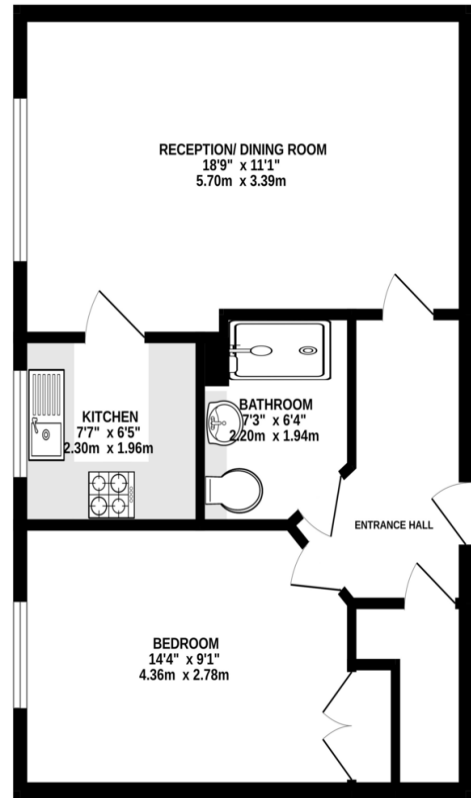
Southerly aspect window looking towards playpark and tennis courts, built in cupboard, heater, emergency pull cord and light fitting.

SHOWER ROOM

Modernised with oversized shower cubicle, fully tiled and thermostatically controlled shower, vanity storage with mirror, wash basin and concealed cistern toilet, light fitting, extractor, heated towel rail, emergency pull and wall heater.

ARMADA COURT & GROUNDS

With landscaped, level gardens, including a gazebo overlooking the bowling green, the swimming pool on your door step and a gated path only a 200 yard walk to Topsham town centre and railway/bus links. The development also offers all the other benefits you would expect from Pegasus including a visitors suite, 24-hour emergency call system, security cameras, owners lounge with patio garden, laundry facilities, Estate Managers office and lift. On site unallocated parking.



TOTAL FLOOR AREA: 497 sq.ft. (46.2 sq.m.) approx.
Measurements are approximate. Not to scale. Illustrative purposes only.
Made with Metropix ©2024



Agents Note: Whilst every care has been taken to prepare these sales particulars, they are for guidance purposes only. All measurements are approximate and for general guidance purposes only and whilst every care has been taken to ensure their accuracy, they should not be relied upon and potential buyers are advised to recheck the measurements. West of Exe is a trading name for East of Exe Ltd, Reg. no. 07121967