





Blended expertise, purposefully applied...

We are a Chiswick based residential property consultancy that provides in-depth experience in the disciplines of estate agency, residential lettings, property management, property staging and interior design – a blend of expertise not commonly found in estate and lettings agency businesses. Having this multi-faceted capability enables us to deliver success to our clients that are seeking a more bespoke and discreet experience than typically offered by high street estate or lettings agents.

Clients value our integrity, energy, expertise and unbiased advice...

The core values of our business are; integrity, clarity and success. Our advice and services are delivered from a trusted platform of professional qualification, experience, dedication and a wealth of in-depth knowledge. This thorough, yet innovative approach to everything that we do has resulted in a strong track record, as evidenced by consistent results and unquestionable success.

What is the new meaning of Bespoke?...

We work with an adaptable approach to our processes to suit individual clients requirements. For example; many of our clients want to avoid public promotion and seek discreet introductions. Over 70% of our transactions are completed without public marketing. We spend less time promoting ourselves and more time combining modern online marketing with a lifetime of networking to introduce the right person in the right way.

More doesn't mean more...

We consciously keep our active portfolio compact, so that we can successfully apply the time, high levels of detail, attention and management you require and deserve whilst achieving our joint objective, success.



EASTBURY GROVE, W4

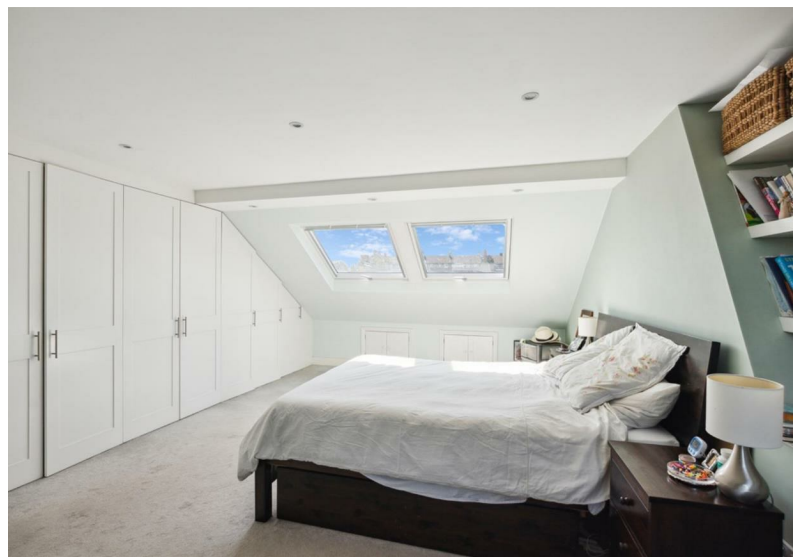
A charming period home located on Eastbury Grove in the heart of Central Chiswick. This delightful property boasts 1,732 sq ft of living space, perfect for a growing family with its four bedrooms, two bathrooms and potential to extend into the side return (subject to usual consents).

Built in 1895, this house features a 27' double reception room, 19' kitchen/family room that overlooks the garden, three good bedrooms on the first floor and a well-designed 'double dormer' loft extension that provides a spacious master suite with bedroom, home office and en-suite shower room.

Eastbury Grove is located within the highly desirable ABC estate. A small group of similar houses, all located within minutes of the High Road, local schools and excellent transport connections into and out of town.

With no chain involved, the process of making this house your own is made even smoother.





Eastbury Grove, W4

Approximate gross internal area

160.90 sq m / 1732 sq ft

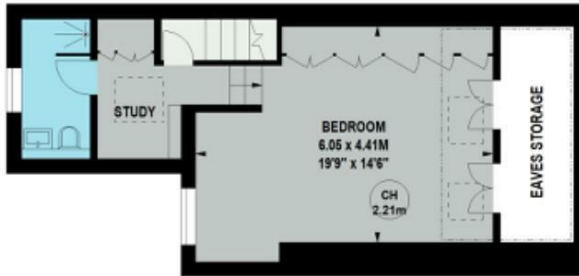
(Including Eaves Storage)

Eaves Storage

6.60 sq m / 71 sq ft



Key :
CH - Ceiling Height



Second Floor



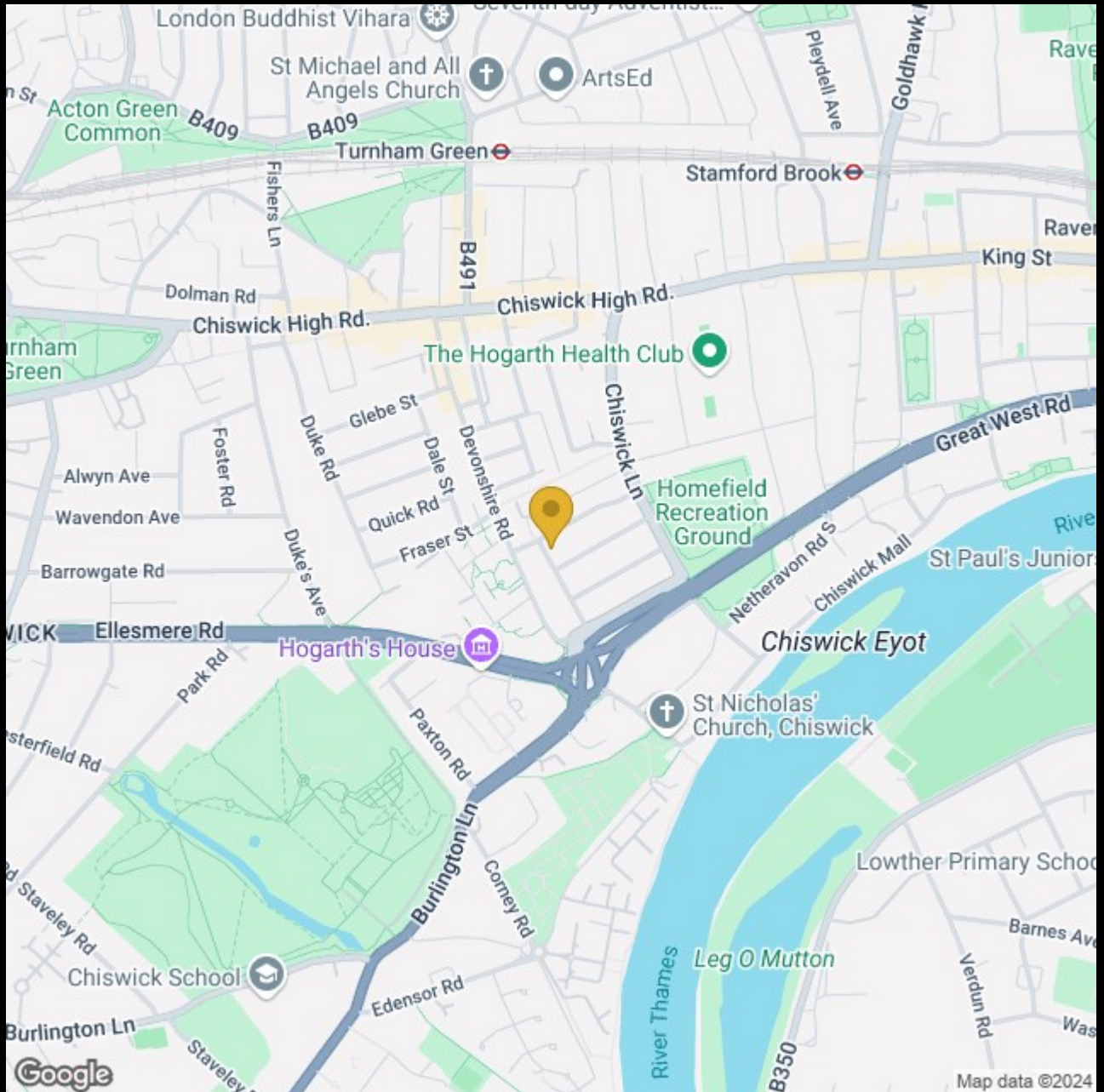
First Floor



Ground Floor

Not to scale, for guidance only and must not be relied upon as a statement of fact.
All measurements and areas are approximate only





020 8995 2030
enquiries@harpersofchiswick.com
www.harpersofchiswick.com

www.twitter.com/HarpersChiswick
www.facebook.com/harpersofchiswick
www.instagram.com/harpersofchiswick/
www.pinterest.co.uk/harpersofchiswick/