



📍 18 Palmer Road, Devizes, Wiltshire, SN10 2FJ

📄 £900 Per Calendar Month



📊 EPC Rating C



Extremely well presented, bright and spacious, 2 double bedroom 2nd floor apartment with parking on the desirable Quakers Walk residential development. Light, bright and airy accommodation comprises communal entrance with stairs to private entrance hall with security intercom, large sitting / dining room with dual aspect windows, kitchen with washer dryer, fridge freezer, electric oven and gas hob, 2 double bedrooms, one with a superb range of wardrobes, and bathroom with shower. Gas central heating. Allocated parking. Available now, u/f, £900pcm. No pets permitted

Situation

The property is located on the popular Quakers Walk that is convenient for both the town and for pleasant walks close by up to the historic Roundway Hill and along the canal tow path. The historic market town of Devizes has many amenities including town centre shopping, a leisure centre, schools for all ages, various supermarkets, a variety of shops, cinema, theatre and thriving weekly market. The historic Kennet & Avon Canal runs through the town providing fishing and walking facilities. The major centres of Bath, Salisbury and Swindon are all within a 30 mile radius.

Property information

We are advised that all mains services are connected.

EPC rating: C

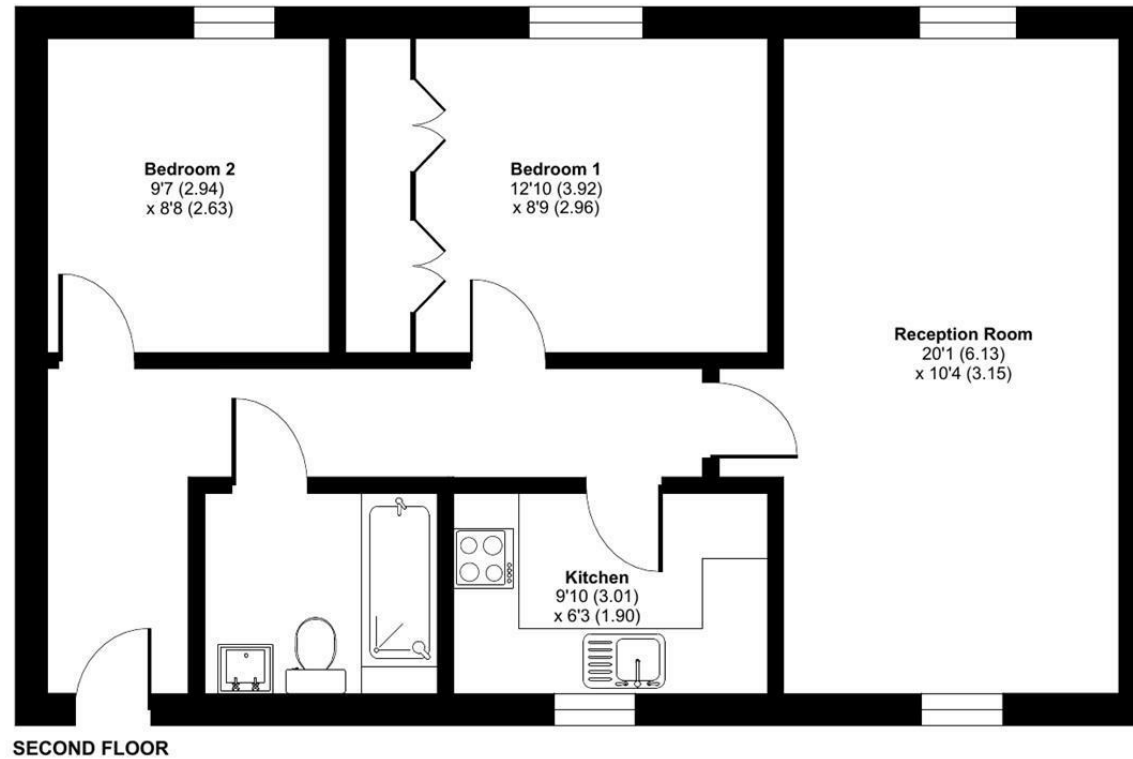
Council tax band: B



Palmer Road, Devizes, SN10

Approximate Area = 665 sq ft / 61.8 sq m

For identification only - Not to scale



Floor plan produced in accordance with RICS Property Measurement 2nd Edition, Incorporating International Property Measurement Standards (IPMS2 Residential). © nitchecom 2025. Produced for Strakers. REF: 1242264

Disclaimer These particulars, whilst believed to be accurate are set out as a general outline only for guidance and do not constitute any part of an offer or contract. Intending purchasers should not rely on them as statements of representation of fact, but must satisfy themselves by inspection or otherwise as to their accuracy. No person in this firm's employment has the authority to make or give any representation or warranty in respect of the property. All measurements and distances are approximate only. Your home is at risk if you do not keep up repayments on a mortgage or other loan secured on it.