



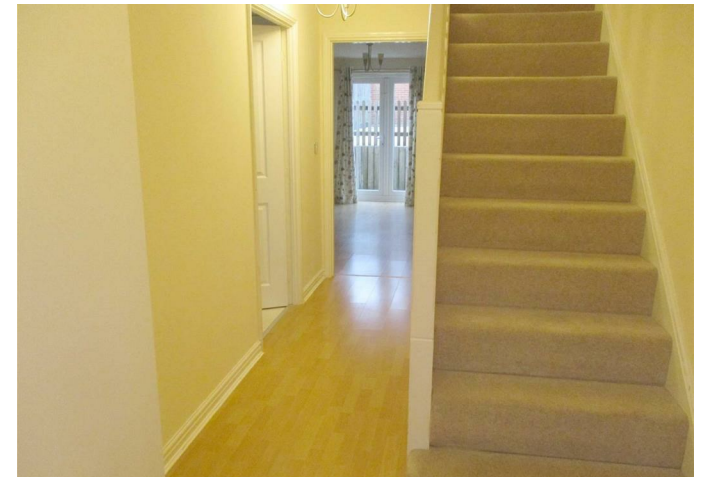
📍 8 Steeple View, Old Town, Swindon, Wiltshire, SN1 3FH

🔗 £1,500 PCM

- Four Bedroom Town House
- Old Town Location
- Two Bathrooms
- Living/Dining Room
- Fitted Kitchen with appliances
- Available NOW
- Unfurnished
- £1500 pcm



🏠 EPC Rating B

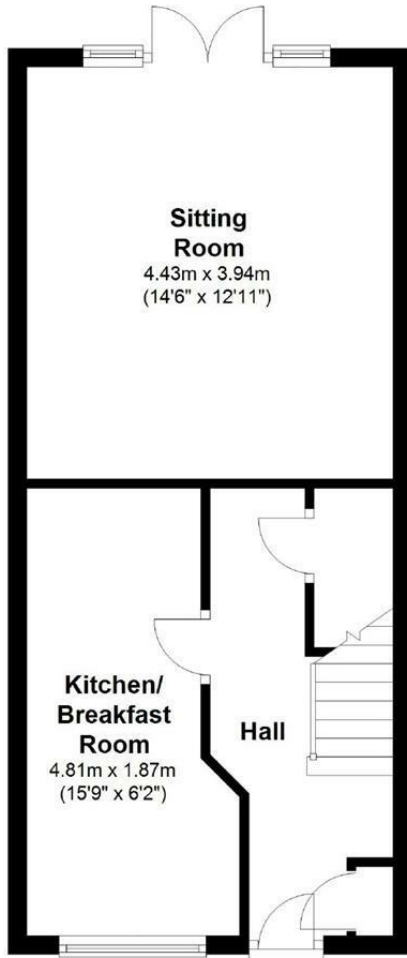


*****AVAILABLE NOW***FOUR DOUBLE BEDROOMS***
TWO BATHROOMS***SOUGHT AFTER GATED
DEVELOPMENT IN OLD TOWN £1500PCM*****

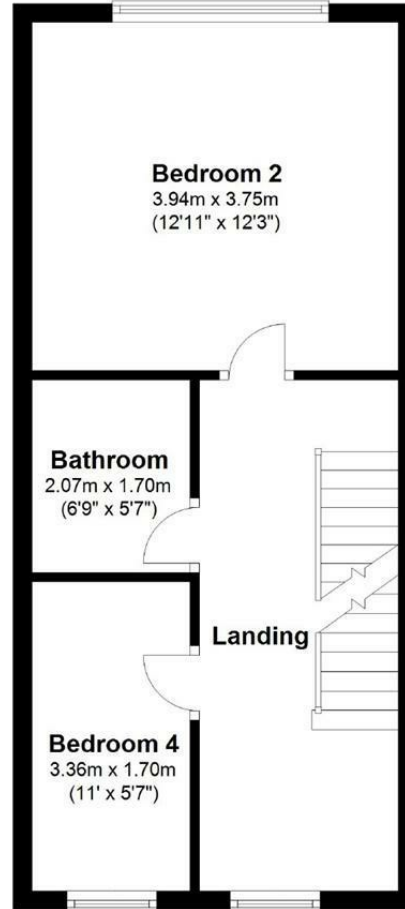
This modern spacious 4 bedroom town house is located in the sought after area of Old Town in a cul-de-sac position within walking distance of all local amenities and the Lawns Park. Arranged over three floors, providing flexible accommodation. The ground floor comprises of a downstairs cloakroom, fully fitted kitchen/breakfast room with appliances, spacious living room/dining area and has French doors to the rear garden. The first floor has a family bathroom and two good sized bedrooms. On the top floor, there is a spacious Principle bedroom with en-suite shower room and a further double bedroom. Carport to the rear, enclosed low maintenance garden. Offered Unfurnished. Available Now. No Pets. £1500pcm.



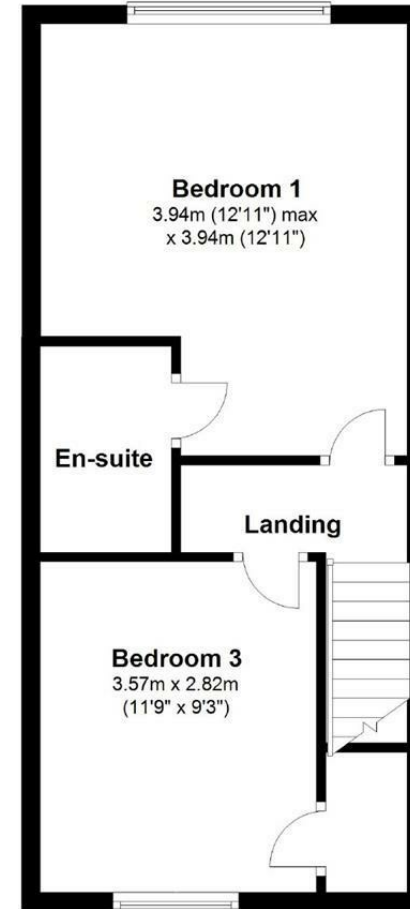
Ground Floor



First Floor



Second Floor



Disclaimer These particulars, whilst believed to be accurate are set out as a general outline only for guidance and do not constitute any part of an offer or contract. Intending purchasers should not rely on them as statements of representation of fact, but must satisfy themselves by inspection or otherwise as to their accuracy. No person in this firm's employment has the authority to make or give any representation or warranty in respect of the property. All measurements and distances are approximate only. Your home is at risk if you do not keep up repayments on a mortgage or other loan secured on it.