



📍 1 Meadow Drive, Devizes, Wiltshire, SN10 3BJ

🔗 £1,250 Per Calendar Month

A very stylish fully renovated 3 bedroom family home set on a generous corner plot within just a short stroll of the town and amenities. Offered with no onward chain.

- Wonderfully Renovated Home
- Well Placed For The Town
- Available Now
- 3 Light & Airy Bedrooms
- New Kitchen with Appliances
- New Bathroom with Shower
- Landscaped Gardens
- Parking For A Number Of Cars



🏠 EPC Rating D



Please be aware due to demand we are unable to take any more enquiries for this property at this time
Fabulous fully renovated 3 bedroom family home within very easy walking distance of all the amenities of Devizes. Beautifully redesigned and updated throughout by the current owners the property has new windows, a new boiler, new electrics, new kitchen & bathroom as well as a tasteful redecoration throughout. A light and bright lobby and hallway with wood effect flooring leads through to a very stylish open plan kitchen/dining room with bi folding doors to the rear. The kitchen is very well equipped with a breakfast bar and AEG appliances to include an induction hob, extractor hood, fridge/freezer, dishwasher, washer dryer, a microwave oven and additional oven. There are granite effect worktops, a wall mounted flat screen TV and blue tooth speakers. A large bay-fronted sitting room overlooks the large front garden. On the first floor there is a sleek new family bathroom with shower, with quality sanitary ware, marble effect tiled flooring and fully tiled walls complemented by two very generous double bedrooms and a further single bedroom. Externally the large south facing front garden has now been landscaped with new turf and a patio as well as all new fencing to the front boundary. There is off road parking for a number of vehicles whilst to the rear there is now a low maintenance garden with seating area and garden shed. Available now, u/f, £1250pcm ***Sorry no pets***

Situation

The property is located in a popular area of town that is only a couple of minutes walk from the many amenities the historic market town of Devizes has to offer. This includes town centre shopping, a leisure centre, schools for all ages, various supermarkets, a variety of shops, cinema, theatre and thriving weekly market. The historic Kennet & Avon Canal runs through the town providing fishing and walking facilities. The major centres of Bath, Salisbury, Swindon, Marlborough and Chippenham are all within a 30 mile radius.

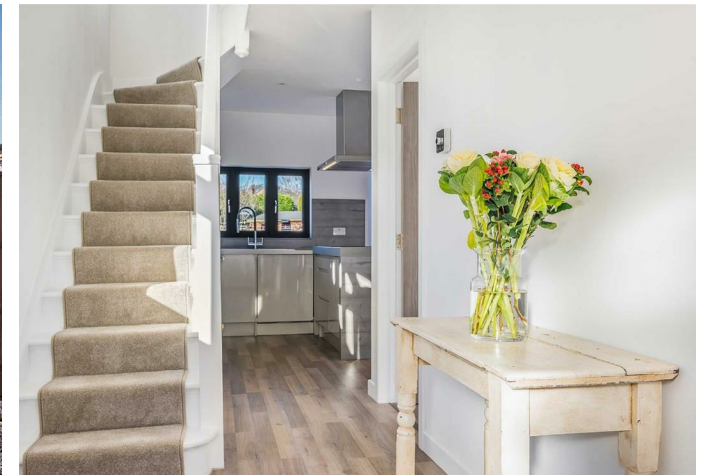
Property Information

Tenure: Freehold

EPC Rating: D

Council Tax: Band C

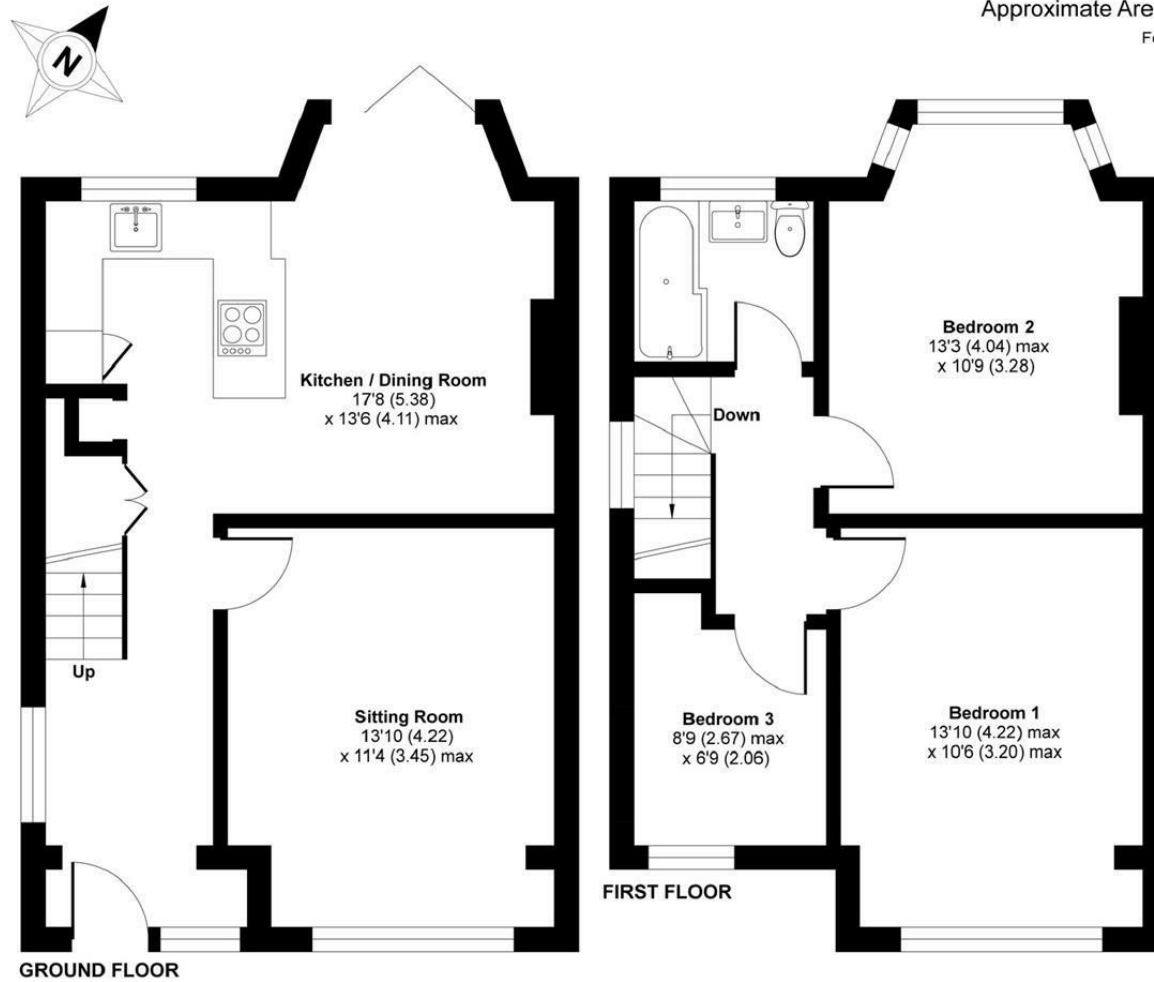
Services: All mains services are connected at the property.



Meadow Drive, Devizes, SN10

Approximate Area = 902 sq ft / 84 sq m

For identification only - Not to scale



Floor plan produced in accordance with RICS Property Measurement Standards incorporating International Property Measurement Standards (IPMS2 Residential). © nichecom 2020. Produced for Strakers. REF: 665097

Disclaimer These particulars, whilst believed to be accurate are set out as a general outline only for guidance and do not constitute any part of an offer or contract. Intending purchasers should not rely on them as statements of representation of fact, but must satisfy themselves by inspection or otherwise as to their accuracy. No person in this firm's employment has the authority to make or give any representation or warranty in respect of the property. All measurements and distances are approximate only. Your home is at risk if you do not keep up repayments on a mortgage or other loan secured on it.