



📍 3 Blossom Drive, Corsham, Wiltshire, SN13 0BF

🔗 £1,200 PCM

A well presented three bedroom semi detached house with allocated parking situated within a small development within easy reach of Corsham town centre. Available 16th August 2024, unfurnished, £1200pcm (sorry no pets).

- TO LET
- WELL PRESENTED
- SEMI DETACHED
- SMALL DEVELOPMENT
- THREE BEDROOMS
- ALLOCATED PARKING
- PATIO GARDEN
- COUNCIL TAX BAND C
- UNFURNISHED
- AVAILABLE 16TH AUGUST 2024



🏠 EPC Rating C



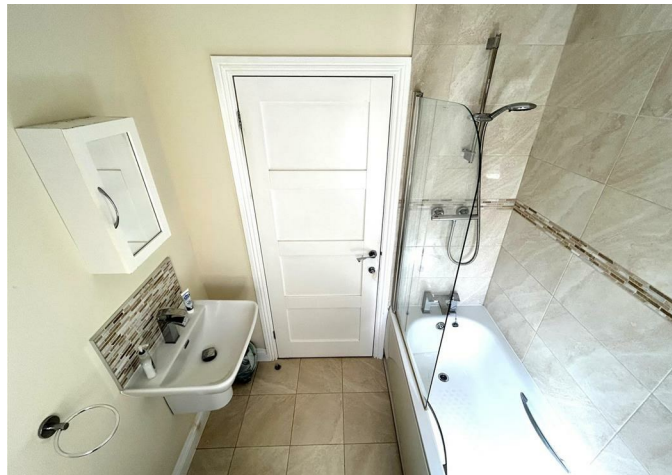
*****DUE TO A HIGH VOLUME OF INTEREST WE ARE NO LONGER TAKING ANY FURTHER VIEWINGS FOR THIS PROPERTY. TO BE REGISTERED FOR ALTERNATIVE PROPERTIES, PLEASE CALL THE OFFICE***** A well presented three bedroom semi detached house with allocated parking situated within a small development within easy reach of Corsham town centre. Available 16th August 2024, unfurnished, £1200pcm (sorry no pets).

Accommodation comprises entrance hall, ground floor w/c with storage cupboard. A nice size kitchen/diner with oven, hob, integrated fridge/freezer, dishwasher and space for a washing machine. There are sliding doors that lead into a living room with external access to the rear garden.

Situated to the first floor are three bedrooms and a bathroom with shower over. The main bedroom benefits from having an en-suite shower room.

Externally there is allocated parking for two vehicles and an enclosed low maintenance patio garden with side access. Further benefits include gas fired central heating and the property provides excellent access to the City of Bath via the A4.

A minimum contract for this property is 12 months.



Disclaimer These particulars, whilst believed to be accurate are set out as a general outline only for guidance and do not constitute any part of an offer or contract. Intending purchasers should not rely on them as statements of representation of fact, but must satisfy themselves by inspection or otherwise as to their accuracy. No person in this firms employment has the authority to make or give any representation or warranty in respect of the property. All measurements and distances are approximate only. Your home is at risk if you do not keep up repayments on a mortgage or other loan secured on it.

The logo for 'strakers' features the word in a lowercase, serif font. The letter 's' is stylized with a decorative flourish that loops around the top of the letter.

For further details 01249 712039
strakers@corsham.co.uk

In branch | Online | On the move
strakers.co.uk