



📍 1 Westminster Gardens, Chippenham, Wiltshire, SN14 0DF

🏠 £1,150 PCM

- TO LET
- WELL PRESENTED
- TWO BEDROOMS
- OFF STREET PARKING
- LOW MAINTENANCE REAR GARDEN
- GOOD ROAD LINKS
- UNFURNISHED
- AVAILABLE NOW



🏠 EPC Rating C



I AM SORRY BUT DUE TO A HIGH VOLUMES OF INTEREST FOR THIS PROPERTY, WE ARE NO LONGER TAKING ANY FURTHER VIEWINGS I'M AFRAID

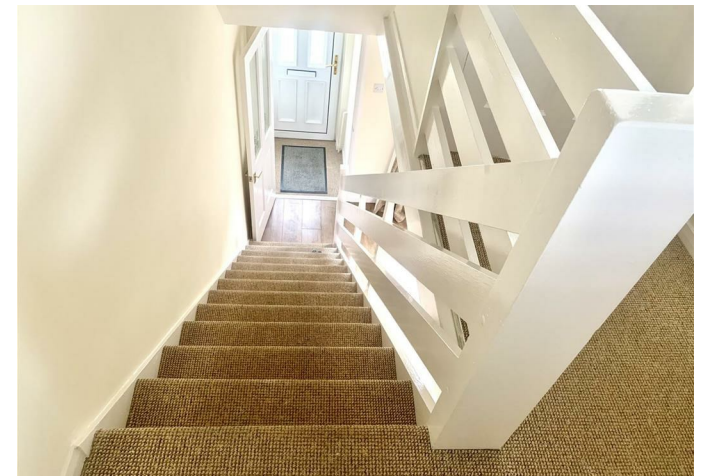
New to the market-A well presented two bedroom house with off street parking situated within a short drive of the town centre whilst providing good access to the A350, A4 and A420. Available now, unfurnished, £1150pcm (sorry no pets).

Description

Accommodation comprises entrance porch leading to a nice size living room. The kitchen/diner is a great size with brand new oven, dishwasher and space for additional appliances. Accessed off the dining area is a utility room/w/c and there is also external rear access to the garden.

Situated to the first floor are two bedrooms and a contemporary shower room with heated towel rail. Bedroom two benefits from having fitted storage.

Externally there is a low maintenance rear garden with side access front to back. There is also off street parking to the front of the property.



Disclaimer These particulars, whilst believed to be accurate are set out as a general outline only for guidance and do not constitute any part of an offer or contract. Intending purchasers should not rely on them as statements of representation of fact, but must satisfy themselves by inspection or otherwise as to their accuracy. No person in this firms employment has the authority to make or give any representation or warranty in respect of the property. All measurements and distances are approximate only. Your home is at risk if you do not keep up repayments on a mortgage or other loan secured on it.



For further details 01249 652717
lettings@strakers.co.uk

In branch | Online | On the move
strakers.co.uk