



📍 70c Park Lane, Chippenham, Wiltshire, SN15 1LW

🏠 £875 PCM

- Top Floor Apartment
- Modern Accommodation
- One Bedroom
- Newly Appointed Bathroom
- Allocated Off-Road Parking
- Central Location, Close to Railway Station



🏠 EPC Rating E



Recently upgraded 1 bedroom first floor apartment with parking within easy walking distance of Chippenham town centre amenities and main line rail station. A communal entrance leads to private entrance, modern kitchen with integrated oven, fridge and freezer, good size living room with feature electric fire, bedroom, and refitted bathroom with shower and washing machine. There is an off street allocated parking bay, plus visitor parking to the rear of the property.

Available now, u/f, for a long term let, £875pcm Sorry, not suitable for pets

Property Information

Council Tax Band; A

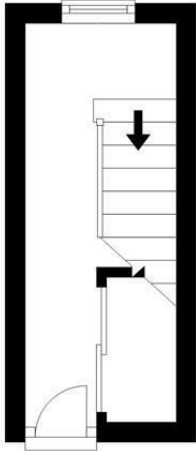
Mains electricity, water, and drainage.

Electric Heating



First Floor

Approx. 65.3 sq. feet



Second Floor

Approx. 534.4 sq. feet



Total area: approx. 599.7 sq. feet

Illustration for identification purposes only, measurements are approximate, not to scale.
Plan produced using PlanUp.

Disclaimer: These particulars, whilst believed to be accurate are set out as a general outline only for guidance and do not constitute any part of an offer or contract. Intending purchasers should not rely on them as statements of representation of fact, but must satisfy themselves by inspection or otherwise as to their accuracy. No person in this firm's employment has the authority to make or give any representation or warranty in respect of the property. All measurements and distances are approximate only. Your home is at risk if you do not keep up repayments on a mortgage or other loan secured on it.