



📍 21 Roman Way, Chippenham, Wiltshire, SN15 3TJ

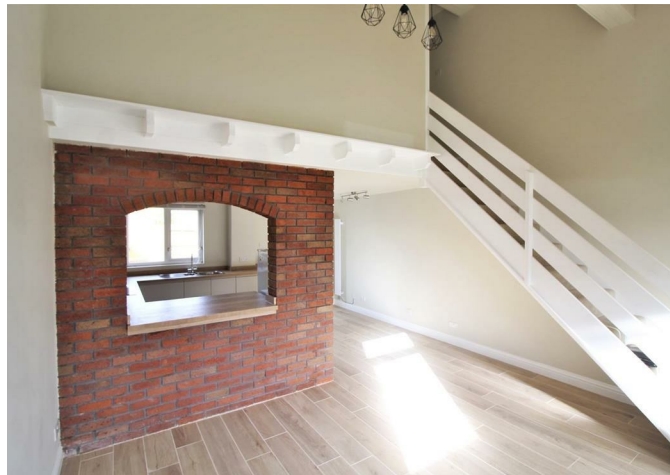
🔗 £950 PCM

A fantastic, one bedroom house with a great size enclosed rear garden and off street parking situated on the popular Pewsham residential development. Available now, unfurnished, £950pcm (sorry no pets).

- TO LET
- VERY WELL PRESENTED
- ONE DOUBLE BEDROOM
- QUIET LOCATION
- LANDSCAPED ENCLOSED REAR GARDEN
- CONSERVATORY
- OFF STREET PARKING
- COUNCIL TAX BAND B
- UNFURNISHED
- AVAILABLE NOW



🏠 EPC Rating D



VIEWINGS WEDNESDAY 4TH JUNE 2025 2.30PM-4.00PM STRICTLY BY APPOINTMENT A fantastic, one bedroom house with a great size enclosed rear garden and off street parking situated on the popular Pewsham residential development. Available now, unfurnished, £950pcm (sorry no pets).

Accommodation comprises a large open plan living/dining/kitchen area with a part vaulted ceiling and exposed brick feature wall. The brand new contemporary kitchen has an oven, hob, fridge/freezer and integrated washing machine. There is also access to the conservatory which provides access to the rear garden.

Situated to the first floor is a good size double bedroom with a mirror front double wardrobe and a modern bathroom with shower over and heated towel rail.

Externally, there is a brilliant size enclosed rear garden which is currently being landscaped and will benefit from having artificial grass. There is also a timber shed and side access linking the front and back of the property. There is off road parking for two vehicles and a small front garden.

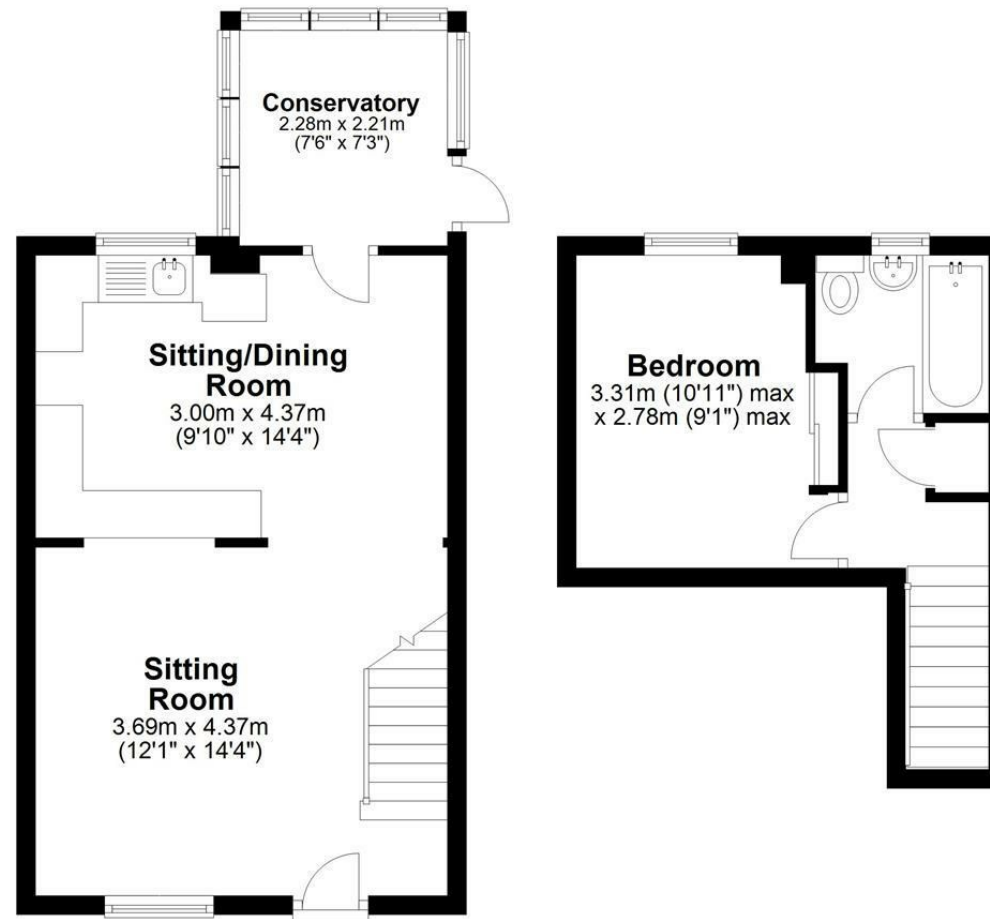
Further benefits include brand new modern electric heating and the property is situated within walking distance of local amenities including a shop, Doctors surgery, pharmacy, and public house whilst providing good access to the town centre, main line train station and the M4-Junction 17.

A minimum contract for this property is 12 months.



Floor Plan

Approx. 51.3 sq. metres (551.7 sq. feet)



Total area: approx. 51.3 sq. metres (551.7 sq. feet)

Illustration for identification purposes only, measurements are approximate, not to scale.
Plan produced using PlanUp.

Disclaimer: These particulars, whilst believed to be accurate are set out as a general outline only for guidance and do not constitute any part of an offer or contract. Intending purchasers should not rely on them as statements of representation of fact, but must satisfy themselves by inspection or otherwise as to their accuracy. No person in this firm's employment has the authority to make or give any representation or warranty in respect of the property. All measurements and distances are approximate only. Your home is at risk if you do not keep up repayments on a mortgage or other loan secured on it.