



📍 13 The Butts, Chippenham, Wiltshire, SN15 3JT

🔗 £925 PCM

A lovely Grade II listed cottage ideally situated close to Monkton Park and within walking distance of the mainline station and town centre.

- TO LET
- PRETTY COTTAGE
- WELL PRESENTED
- TWO DOUBLE BEDROOMS
- CENTRALLY LOCATED
- CLOSE TO TRAIN STATION
- COUNCIL TAX BAND B
- UNFURNISHED
- AVAILABLE EARLY TO MID OCTOBER 2023



🏠 EPC Rating E



DUE TO A HIGH VOLUME OF INTEREST WE ARE NO LONGER TAKING ANY FURTHER VIEWINGS FOR THIS PROPERTY. TO BE REGISTERED FOR ALTERNATIVE PROPERTIES, PLEASE CALL THE OFFICE A lovely Grade II listed cottage ideally situated close to Monkton Park and within walking distance of the mainline station and town centre.

The ground floor accommodation comprises; entrance porch with stable door, a delightful, cosy open plan living space with inglenook fireplace, exposed stone and walls beams with a modern fitted kitchen and "Corian" worksurfaces.

The first floor comprises; double bedroom with two fitted double cupboards and a modern bathroom with a white suite. A second staircase leads up to another double bedroom on the second floor with sloping ceiling and exposed beams. There is an optional double bed, mattress, two bedside units and a desk situated in bedroom two on the second floor..

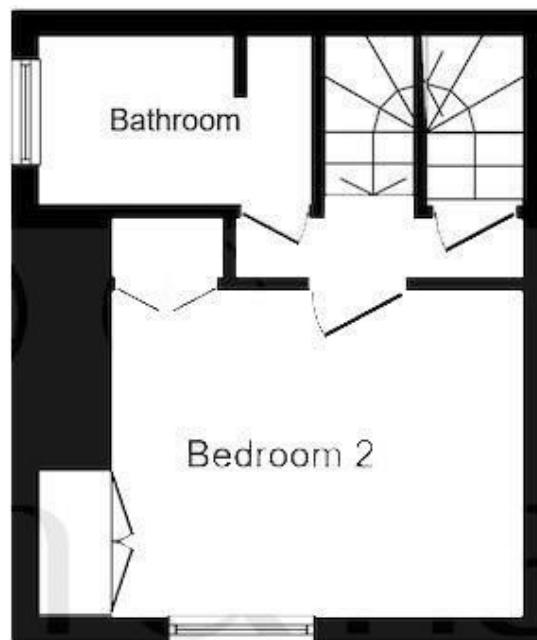
The property benefits from gas central heating, a pleasant courtyard style front garden and part use of a useful external adjoining store room with power.

A minimum contract for this property is 12 months.





Ground Floor



First Floor



Second Floor

This plan is for illustration purposes only and may not be representative of the property. Plan not to scale.

Powered by audioagent.com

Disclaimer: These particulars, whilst believed to be accurate are set out as a general outline only for guidance and do not constitute any part of an offer or contract. Intending purchasers should not rely on them as statements of representation of fact, but must satisfy themselves by inspection or otherwise as to their accuracy. No person in this firm's employment has the authority to make or give any representation or warranty in respect of the property. All measurements and distances are approximate only. Your home is at risk if you do not keep up repayments on a mortgage or other loan secured on it.