



Chantries
& Pewleys

Grayling Close
Godalming



INTRODUCING

30 Grayling Close

GODALMING, SURREY, GU7 1AG

A beautifully presented three bedroom semi detached town house situated in a very popular private road in Busbridge, ideally positioned for the local schools, close to open countryside and just one mile from the High street. This stylish modern family home is set out over three floors, providing flexible use of the space and has been fitted to a very high standard throughout.



3 BEDROOMS



BATHROOM & EN-SUITE SHOWER ROOM



SITTING ROOM WITH JULIET BALCONY



DRIVEWAY PARKING FOR 2 CARS

Tenure: Freehold

Road service charge: £456.36 pa.

Council Tax Band: E

EPC: B





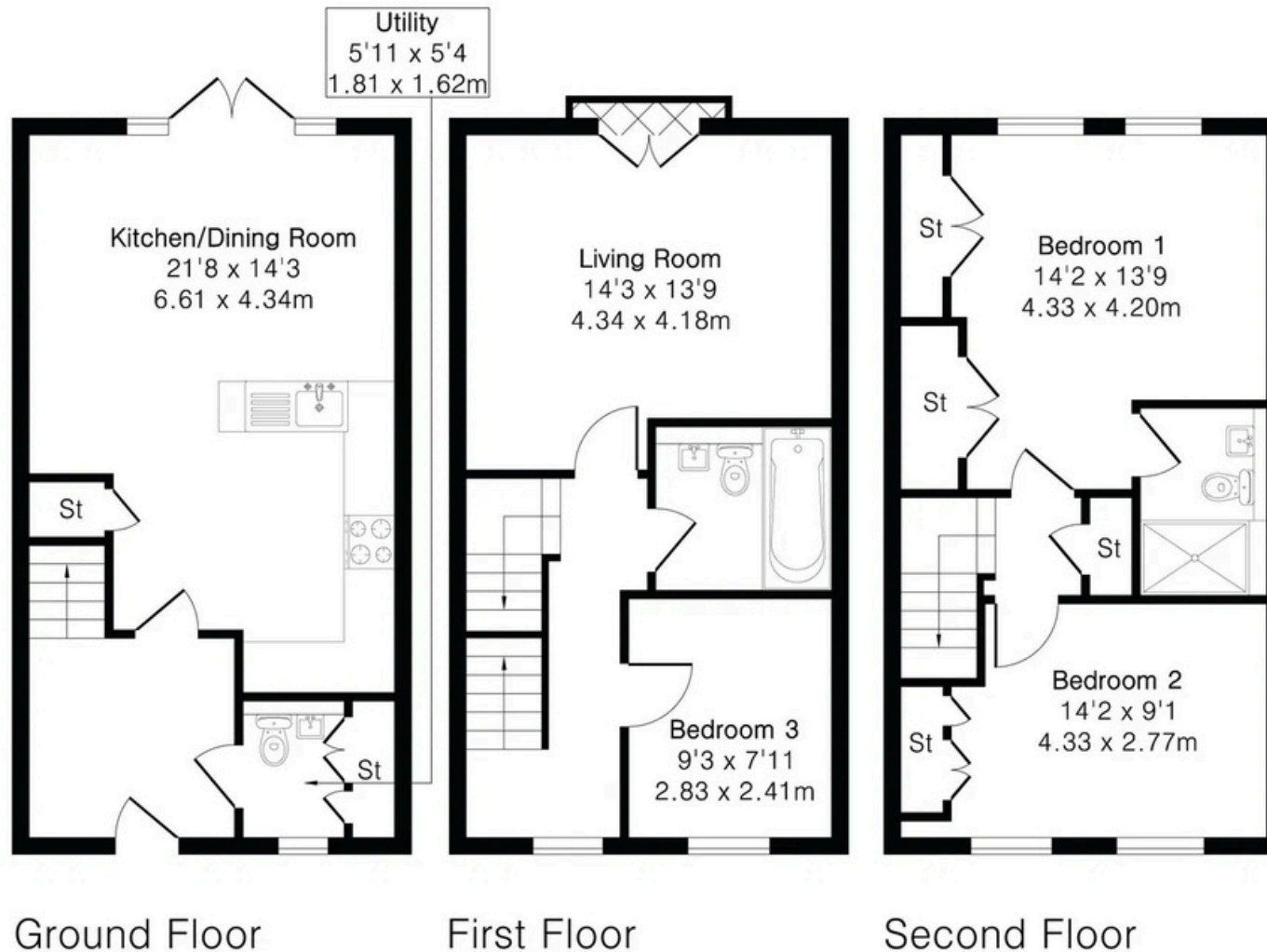


Approximate Gross Internal Area 1167 sq ft - 108 sq m

Ground Floor Area 389 sq ft – 36 sq m

First Floor Area 389 sq ft – 36 sq m

Second Floor Area 389 sq ft – 36 sq m





01483 304344

Shalford@chantriesandpewleys.com

Richmond House, 6 Station Row, Shalford GU4 8BY