



Chantries
& Pewleys

Dorking Road
Chilworth



INTRODUCING

13 Dorking Road

CHILWORTH, SURREY, GU4 8NW

A substantial and immaculately presented family home with views and exceptional accommodation. Set in the historic and sought-after parish of St Martha's, this superbly presented family residence offers versatile accommodation across two floors, with far-reaching views towards St Martha's Hill. Ideally located within walking distance of miles of open countryside and woodland, this home perfectly blends rural tranquility with modern convenience.



5 BEDROOMS



BATHROOM & 2 EN-SUITE SHOWER ROOMS



1/3RD ACRE PLOT



AMPLE OFF ROAD PARKING

Tenure: Freehold

Council Tax Band: E

EPC: C







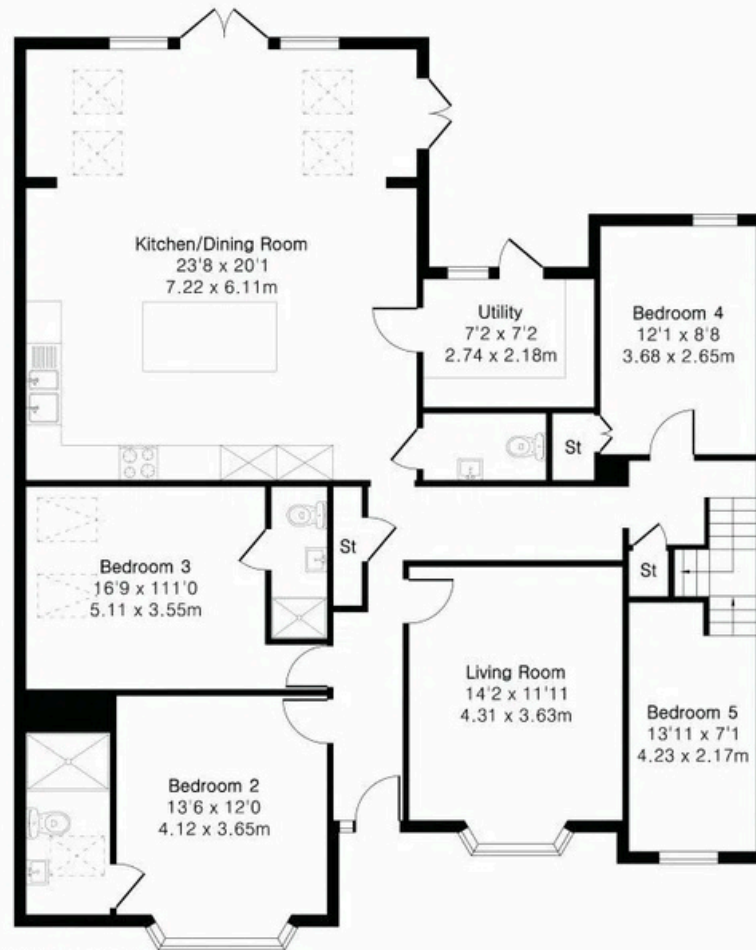




Approximate Gross Internal Area 2224 sq ft - 207 sq m

Ground Floor Area 1644 sq ft – 153 sq m

First Floor Area 580 sq ft – 54 sq m



Ground Floor



First Floor



01483 304344

Shalford@chantriesandpewleys.com

Richmond House, 6 Station Row, Shalford GU4 8BY