



£1,400 pcm Fees Apply

Let

2 Bedroom Apartment

Central Oxford

Allocated Parking

Martin & Co Martin & Co Oxford
31 Woodins Way, Paradise Street, Oxford, OX1 1HD
01865 812110
oxford@martinco.com



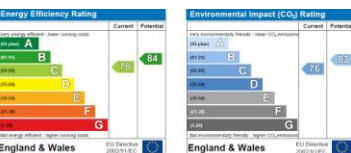
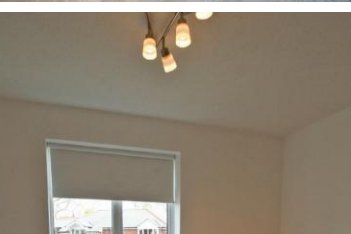
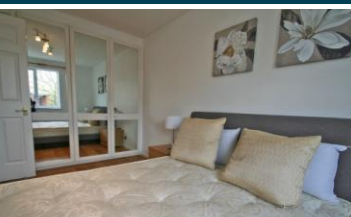
MARTIN&CO
Letting • Sales • Investment

£1,400 pcm Fees Apply

2 Bedrooms, Apartment

With modern furnishings and recently decorated to a beautiful standard, a 2 BEDROOM APARTMENT with riverside BALCONY, extensive wood flooring, landscaped GARDENS and allocated PARKING. Situated in a peaceful location close to the city centre with fast access to the A34. This apartment offers superior accommodation and a stunning contemporary fitted kitchen. The apartment is also conveniently close to Oxford's new Westgate shopping complex including the new John Lewis outlet, scheduled for opening October 2017.

- Stylish upper floor apartment
- Modern furnishings and recently decorated
- 2 Double bedrooms
- Riverside balcony
- Extensive wood flooring
- Updated kitchen with integrated appliances
- Landscaped gardens
- Deposit: £2,800



Martin & Co Martin & Co Oxford
31 Woodins Way, Paradise Street, Oxford, OX1 1HD
01865 812110
oxford@martinco.com



MARTIN&CO
Letting • Sales • Investment