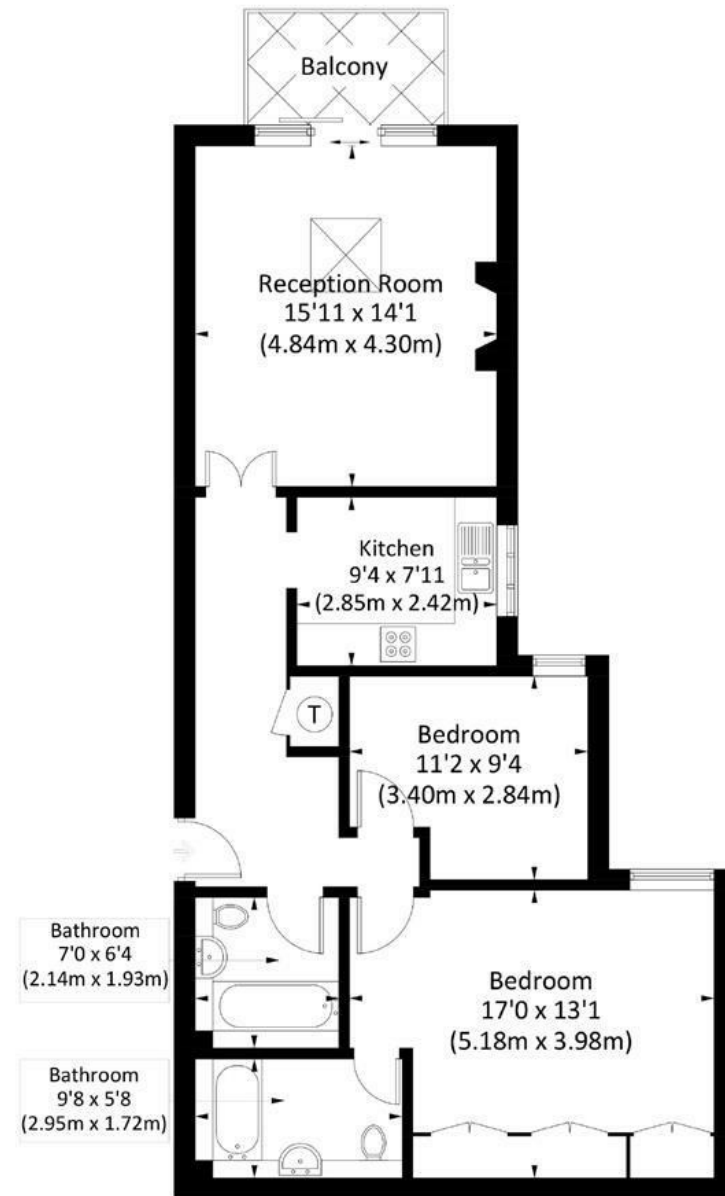
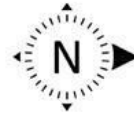


LANGHAM COURT, SW15

Approx. gross internal area = 863 Sq Ft. / 80.2 Sq M



First Floor

Illustration for identification purposes only, measurements are approximate, not to scale. FloorplansUsketch.com © 2019 (ID590749)

DISCLAIMER•These particulars are intended to give a fair and substantially correct overall description for the guidance of intending purchasers and do not constitute an offer or part of a contract. Prospective purchasers and/or lessees ought to seek their own professional advice.

•All descriptions, dimensions, areas, references to condition and necessary permissions for use and occupation and other details are given in good faith and are believed to be correct, but any intending purchasers should not rely on them as statements or representations of fact, but must satisfy themselves by inspection or otherwise as to the correctness of each of them.
•All measurements are approximate.



Langham Court, Putney, SW15

A spacious and perfectly located two double bedroom apartment on the first floor of this small, purpose built development in central Putney. Offered on a unfurnished basis and benefiting from a private terrace, a communal garden and off-street parking, the accommodation comprises an entrance hallway, large and bright reception room with skylight and access to the terrace, fully fitted kitchen, two double bedrooms and two bathrooms (one en suite). This flat offers superb living and entertaining space and is ideally located for all the amenities and transport Putney has to offer. Available early August 2024.



- TWO BEDROOM FLAT
- FULLY FITTED KITCHEN
- TWO BATHROOMS
- OFF-STREET PARKING
- EPC C
- RECEPTION ROOM
- TWO DOUBLE BEDROOMS
- PRIVATE BALCONY
- FIVE MINUTES FROM HIGH STREET
- COUNCIL TAX BAND E

Per Calendar Month
£2,500 Per Calendar Month

