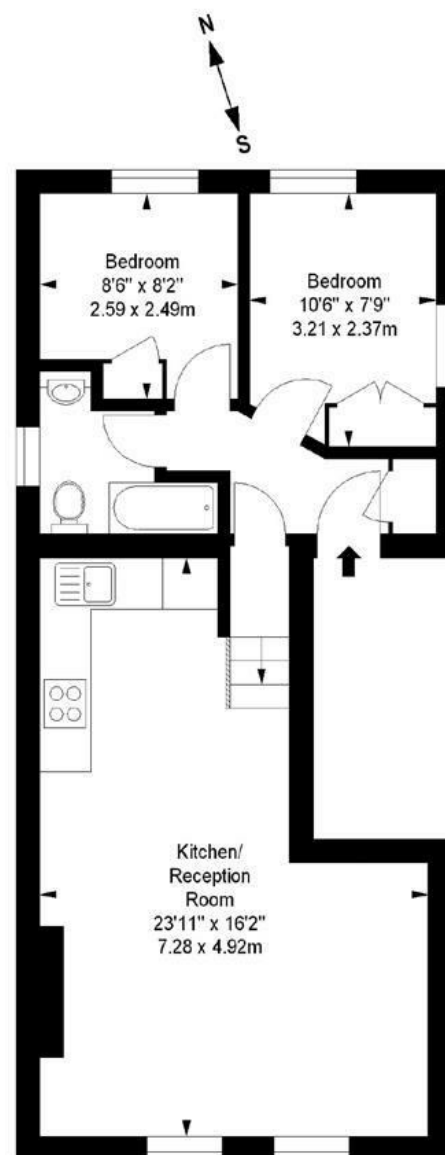


WARREN

The Putney Estate Agent

Lacy Road, SW15
Approximate gross internal area
554 sq ft / 51.47 sq m



First Floor

Illustration For Identification Purposes Only. Not To Scale
*Floorplan Drawn According To RICS Guidelines

DISCLAIMER•These particulars are intended to give a fair and substantially correct overall description for the guidance of intending purchasers and do not constitute an offer or part of a contract. Prospective purchasers and/or lessees ought to seek their own professional advice.
•All descriptions, dimensions, areas, references to condition and necessary permissions for use and occupation and other details are given in good faith and are believed to be correct, but any intending purchasers should not rely on them as statements or representations of fact, but must satisfy themselves by inspection or otherwise as to the correctness of each of them.
•All measurements are approximate.



WARREN

The Putney Estate Agent

Lacy Road, London, SW15

A charming two bedroom apartment in a fantastic location just moments from the High Street. Located above commercial premises this apartment is on the first floor and the accommodation comprises, entrance hall, two bedrooms, bathroom, reception with feature fireplace and open plan kitchen. Lacy Road is perfectly located for all the amenities and transport Putney has to offer. Available late January 2025.



- TWO BEDROOM APARTMENT
- OPEN PLAN KITCHEN
- BATHROOM
- EPC C
- RECEPTION
- TWO BEDROOMS
- PRIME LOCATION
- COUNCIL TAX BAND D

Per Calendar Month
£1,900 Per Calendar Month

