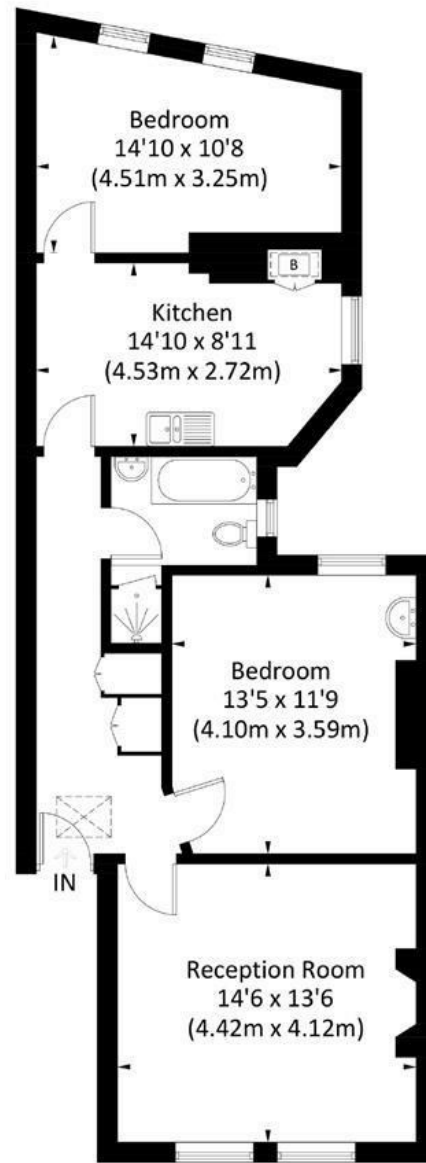


WARWICK MANSIONS, SW15

Approx. gross internal area 787 Sq Ft. / 73.1 Sq M



Second Floor

Illustration for identification purposes only, measurements are approximate, not to scale. FloorplansUsketch.com © 2017 (ID336083)

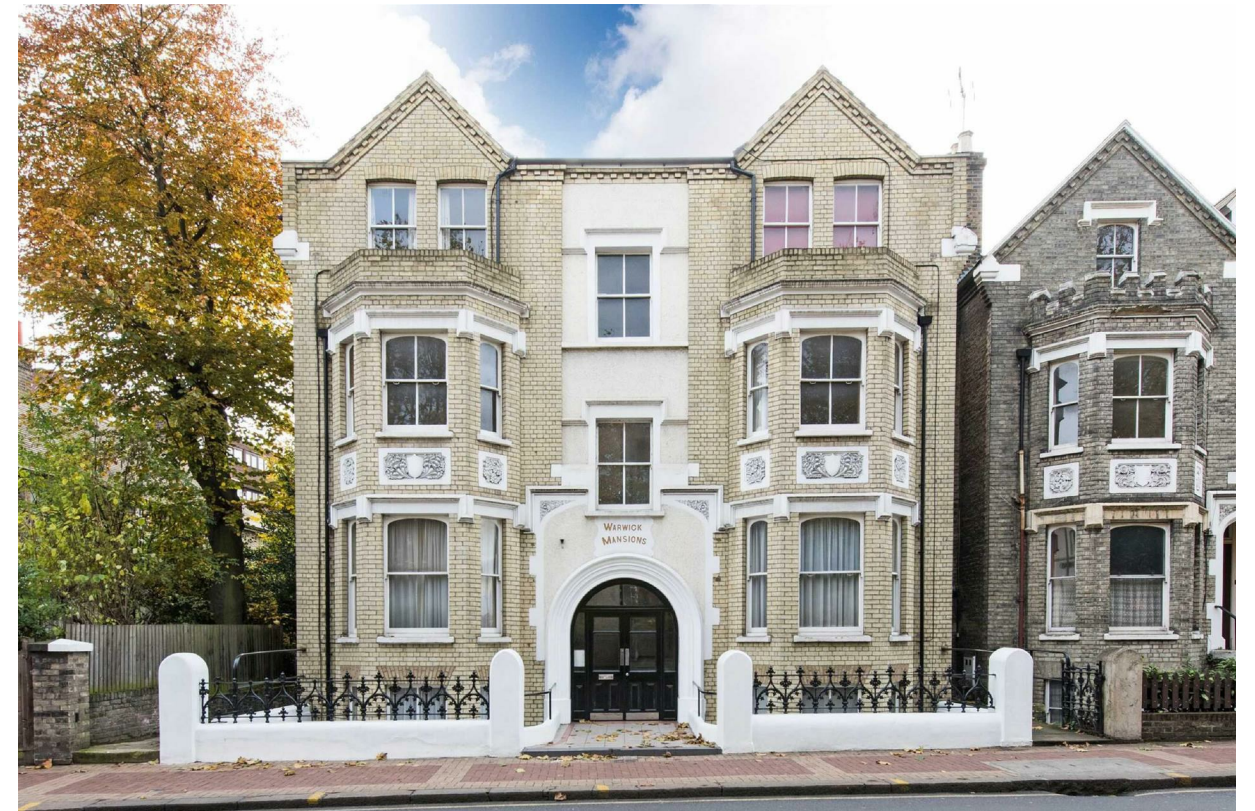
DISCLAIMER•These particulars are intended to give a fair and substantially correct overall description for the guidance of intending purchasers and do not constitute an offer or part of a contract. Prospective purchasers and/or lessees ought to seek their own professional advice.

•All descriptions, dimensions, areas, references to condition and necessary permissions for use and occupation and other details are given in good faith and are believed to be correct, but any intending purchasers should not rely on them as statements or representations of fact, but must satisfy themselves by inspection or otherwise as to the correctness of each of them.
•All measurements are approximate.



Warwick Mansions, Putney, SW15

A fantastic two double bedroom apartment on the top floor of this small mansion block in the heart of Lower West Putney. Offered on an unfurnished basis, the accommodation comprises an entrance hallway, bright and spacious reception room, fitted kitchen, two double bedrooms and bathroom with bath and separate shower cubicle. This lovely flat is ideally located for all the amenities and transport Putney has to offer. Available mid September 2024.



- MANSION FLAT
- FITTED KITCHEN
- SMART BATHROOM
- CLOSE TO RIVER
- EPC E
- RECEPTION ROOM
- TWO DOUBLE BEDROOMS
- NEAR HIGH STREET
- UNFURNISHED
- COUNCIL TAX BAND D

Per Month
£2,000 Per Month

