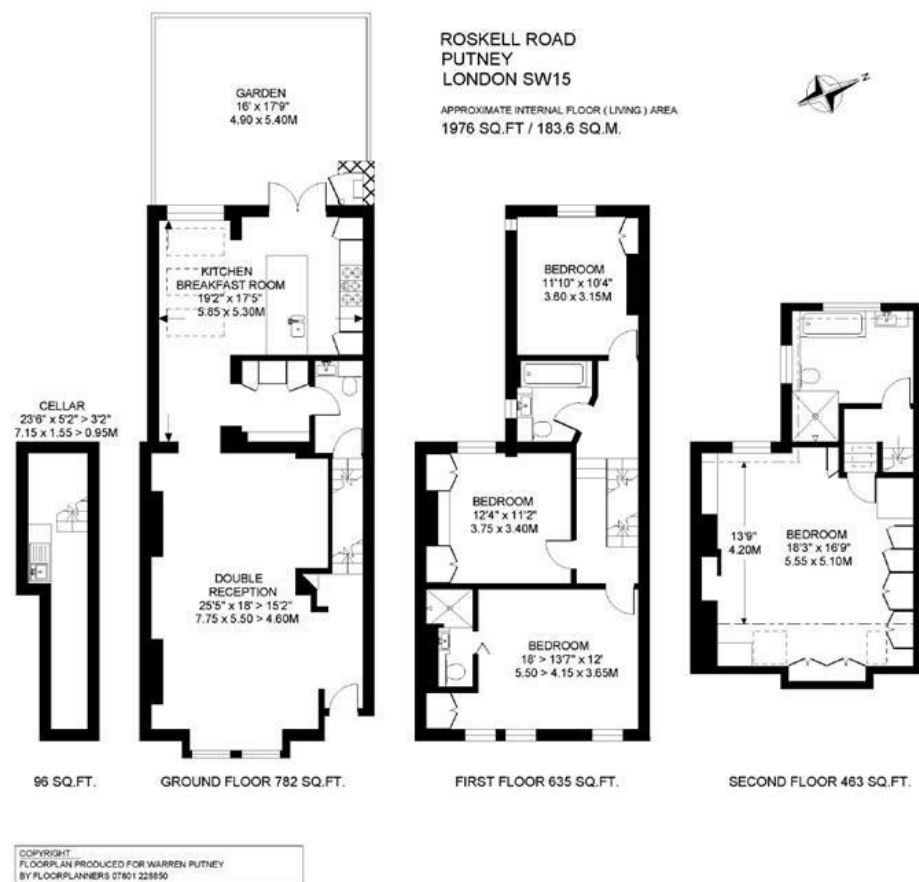


## Roskell Road, Putney, SW15

A stunning and immaculately presented four bedroom family located on this prime Lower West Putney road, moments from the river. Offered on an unfurnished basis, the ground floor accommodation comprises a bright and spacious double reception room, a modern fully extended kitchen/breakfast room with access to the patio garden, and guest WC. To the upper floors, there is the principal bedroom with en suite bathroom, guest suite with en suite shower room, two further bedrooms and a family bathroom. Roskell Road is a highly sought-after residential road in the heart of the every popular Lower West Putney, moments from all the cafe's, shops and restaurants on the Lower Richmond Road as well as the river and embankment. There are also numerous highly regarded schools close by.



- MID TERRACED HOUSE
- EXTENDED KITCHEN
- THREE BATH/SHOWER ROOMS
- GUEST WC
- EPC D
- DOUBLE RECEPTION ROOM
- FOUR DOUBLE BEDROOMS
- UTILITY ROOM
- WEST FACING GARDEN
- COUNCIL TAX BAND F

Per Calendar Month  
**£5,000 Per Calendar Month**



