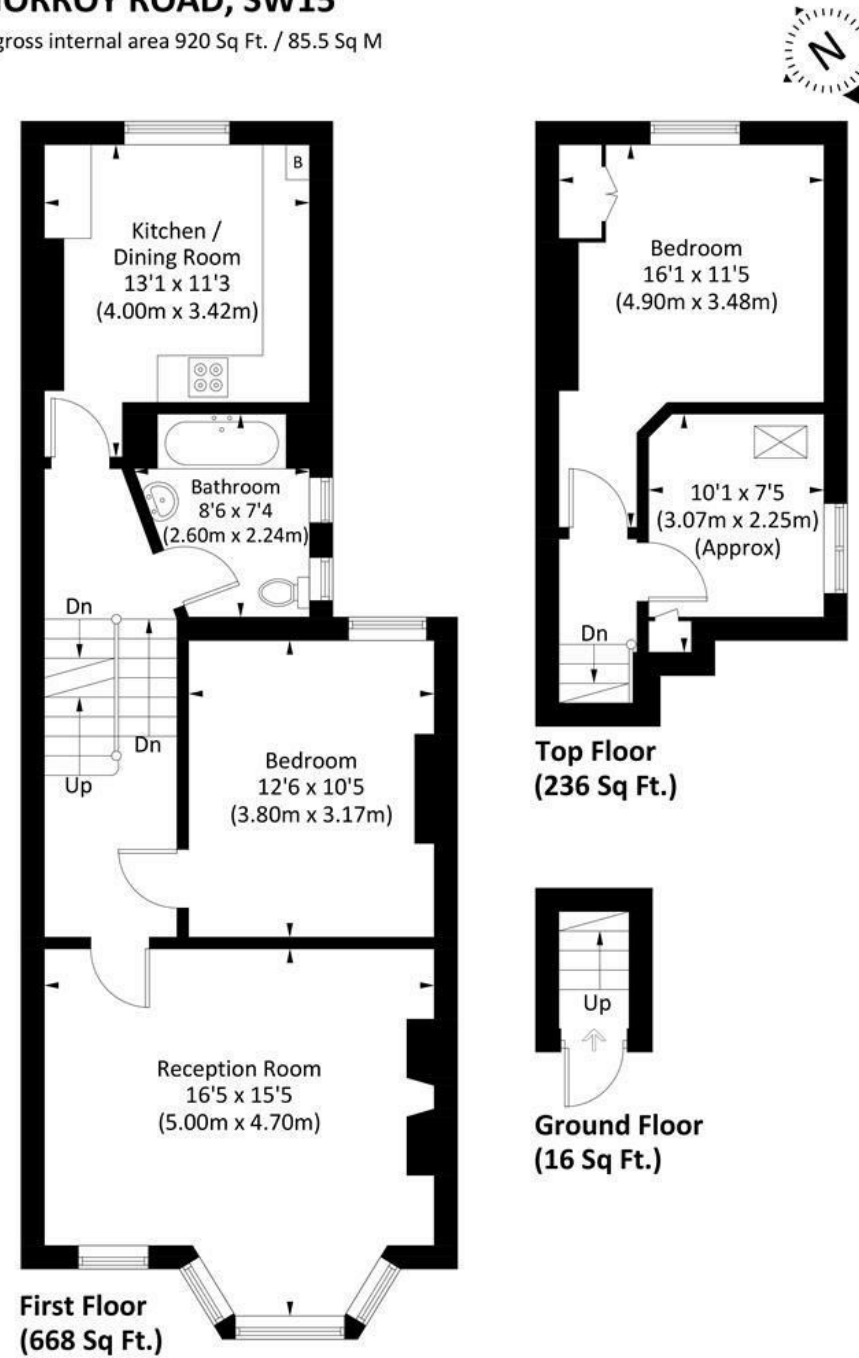


## Norroy Road, Putney, SW15

### FFF NORROY ROAD, SW15

Approx. gross internal area 920 Sq Ft. / 85.5 Sq M



This beautifully presented, period, split level flat is situated over the first and top floors of a Victorian Terraced house in Norroy Road. The spacious accommodation is neutrally decorated and comprises; staircase to first floor landing, a large sitting room with both bay and picture windows, a modern, fully fitted kitchen, bathroom with shower over the bath and underfloor heating, two well proportioned double bedrooms both with fitted wardrobes and a further single bedroom/nursery/study. The property has been extremely well maintained and is double glazed throughout. The flat is perfectly located being at the far end of Norroy Road but within a moments stroll of the High Street, Mainline Station and within an 8 minute walk to East Putney Tube. Offered on an unfurnished basis and available late July 2024.



- TOP FLOOR MAISONETTE
- SEPARATE STUDY/NURSERY
- FITTED KITCHEN
- PRIME LOCATION
- COUNCIL TAX BAND E
- TWO BEDROOMS
- RECEPTION ROOM
- BATHROOM WITH SHOWER
- EPC D

Per Calendar Month  
**£2,500 Per Calendar Month**



**DISCLAIMER**•These particulars are intended to give a fair and substantially correct overall description for the guidance of intending purchasers and do not constitute an offer or part of a contract. Prospective purchasers and/or lessees ought to seek their own professional advice.  
 •All descriptions, dimensions, areas, references to condition and necessary permissions for use and occupation and other details are given in good faith and are believed to be correct, but any intending purchasers should not rely on them as statements or representations of fact, but must satisfy themselves by inspection or otherwise as to the correctness of each of them.  
 •All measurements are approximate.



