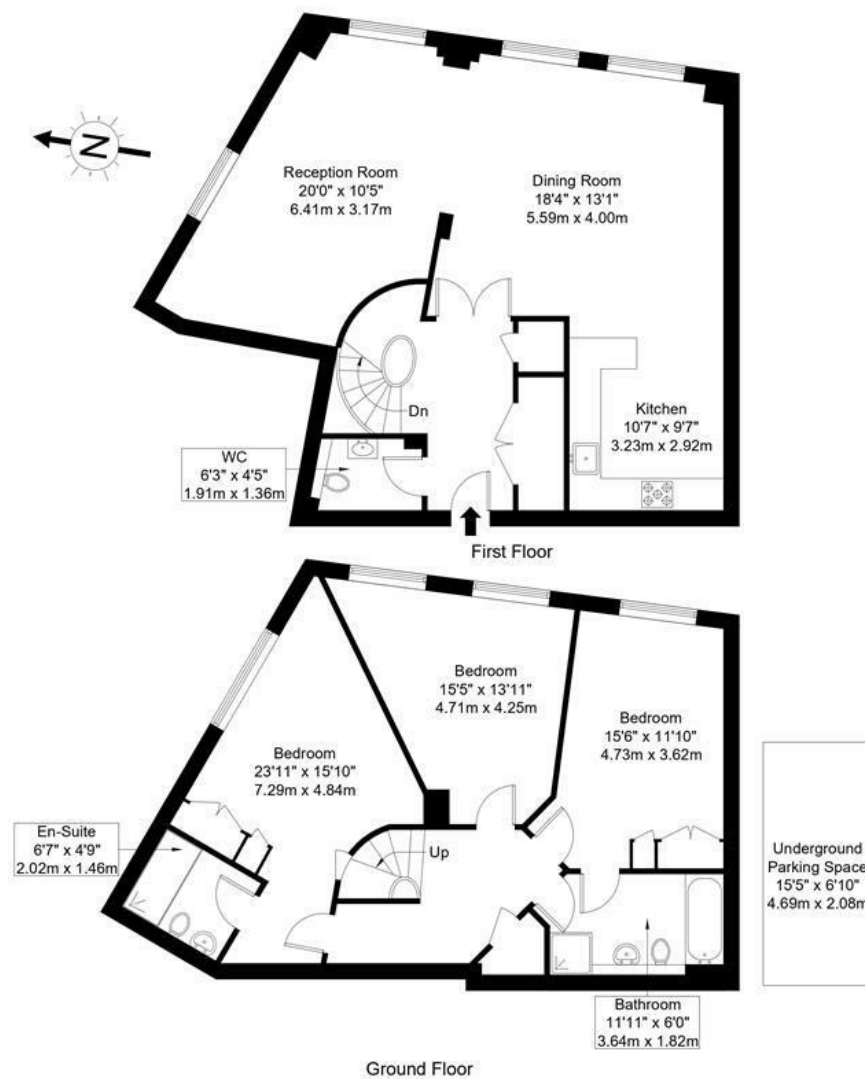


Upper Richmond Road, SW15 6SY

Approx Gross Internal Area = 144 sq m / 1550 sq ft



Ref :

Copyright **BLEU PLAN**

The Floor plan is not to scale and measurements and areas shown are approximate and therefore should be used for illustrative purposes only. The plan has been prepared in accordance with the RICS code of Measuring Practice and whilst we have confidence in the information produced it must not be relied on. Maximum lengths and widths are represented on the floor plan. If there is any aspect of particular importance, you should carry out or commission your own inspection of the property.
Copyright © BleuPlan

DISCLAIMER•These particulars are intended to give a fair and substantially correct overall description for the guidance of intending purchasers and do not constitute an offer or part of a contract. Prospective purchasers and/or lessees ought to seek their own professional advice.
•All descriptions, dimensions, areas, references to condition and necessary permissions for use and occupation and other details are given in good faith and are believed to be correct, but any intending purchasers should not rely on them as statements or representations of fact, but must satisfy themselves by inspection or otherwise as to the correctness of each of them.
•All measurements are approximate.



Percy Laurie House, Putney, SW15

A fabulous three double bedroom split level apartment measuring 1550sq ft located right in the heart of Central Putney. The ground floor consists of three good size double bedrooms with the master having access to an en suite bathroom, whilst the other two bedrooms have access to the family bathroom. From there stairs lead up to a bright and spacious reception room which is 20ft in length. This continues through to a lovely dining area and on to a modern fully fitted kitchen. There is also a separate w.c to this floor.

Percy Laurie house is situated just a few minutes walk from Putney High Street with all its amenities and great transport links and is also within close proximity of The River Thames.

This property comes with an underground parking space, convenience of a ramp to the lift for those less able, as well as benefitting from a storage locker and on site concierge. The property is offered with no onward chain.



- THREE DOUBLE BEDROOMS
- DINING AREA
- SEPARATE W.C
- FAMILY BATHROOM/SHOWER ROOM
- SPLIT LEVEL APARTMENT
- RECEPTION ROOM
- KITCHEN
- EN-SUITE BATHROOM
- PRIVATE UNDERGROUND PARKING SPACE
- CENTRAL PUTNEY

Guide Price

£890,000

Available

