

Magdalene House, Manor Fields, SW15

Approximate gross internal area
1055 sq ft / 98.01 sq m

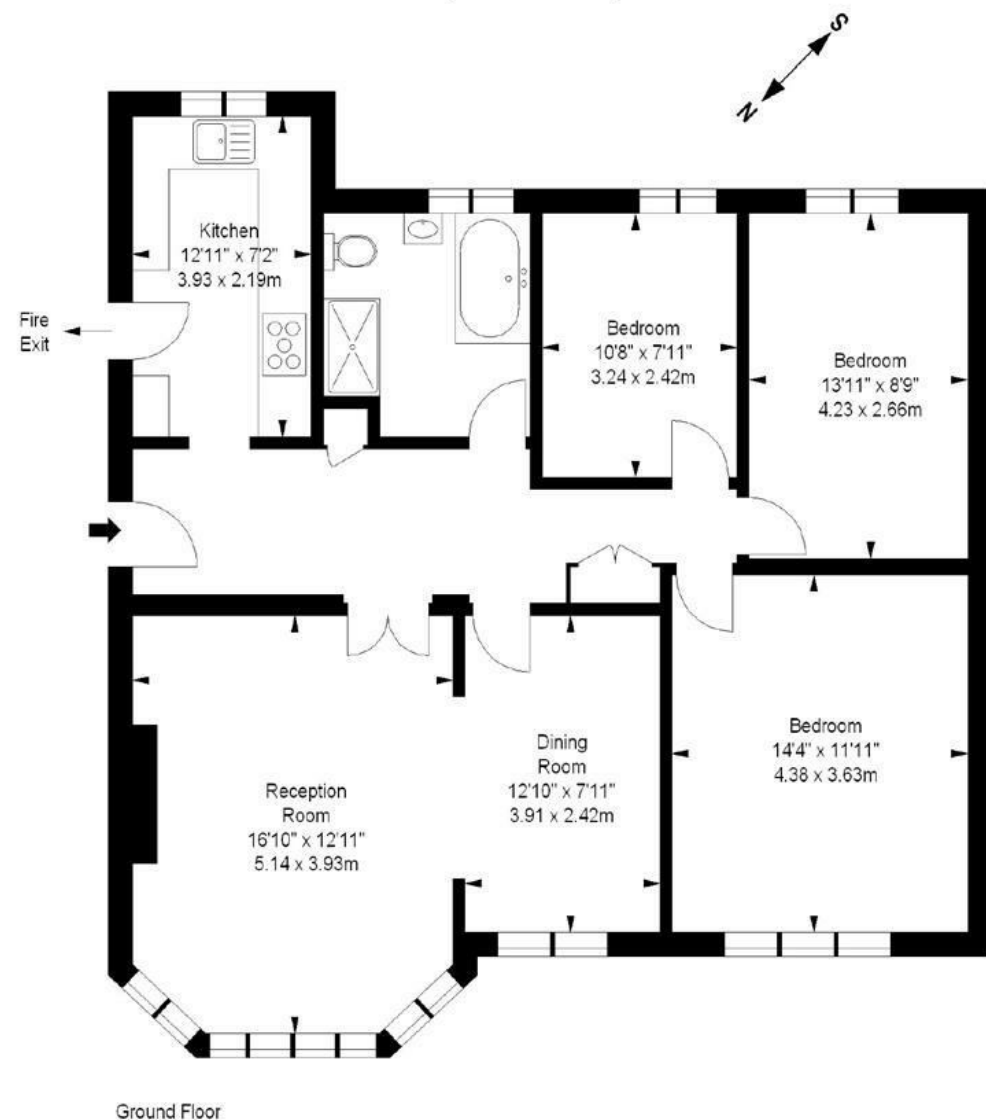


Illustration For Identification Purposes Only. Not To Scale
*Floorplan Drawn According To RICS Guidelines

DISCLAIMER•These particulars are intended to give a fair and substantially correct overall description for the guidance of intending purchasers and do not constitute an offer or part of a contract. Prospective purchasers and/or lessees ought to seek their own professional advice.
•All descriptions, dimensions, areas, references to condition and necessary permissions for use and occupation and other details are given in good faith and are believed to be correct, but any intending purchasers should not rely on them as statements or representations of fact, but must satisfy themselves by inspection or otherwise as to the correctness of each of them.
•All measurements are approximate.



Magdalene House, Putney, SW15

An absolutely spectacular and immaculate three double bedroom flat in this highly prestigious and sought after 1930's private development. Situated on the raised ground floor overlooking acres of communal grounds. The accommodation is beautifully presented and comprises, an oak panelled entrance hallway, an elegant double reception room overlooking the gardens, a smart, fully fitted kitchen with all appliances, three double bedrooms and a luxury bathroom with freestanding bath and separate shower cubicle. There is also underfloor heating in both the kitchen and bathroom. Manor Fields residents have the benefit of acres of well maintained grounds, off-street parking. 24hr security, porter service and is just a short walk from the high street, both mainline and underground stations. Available late August 2025.



- MANSION APARTMENT
- 3 BEDROOMS
- LUXURY BATHROOM
- OFF STREET PARKING
- EPC D
- DOUBLE RECEPTION
- KITCHEN
- LANDSCAPED GARDENS
- 24 HOUR SECURITY
- COUNCIL TAX BAND F

Per Month
£3,250 Per Month

