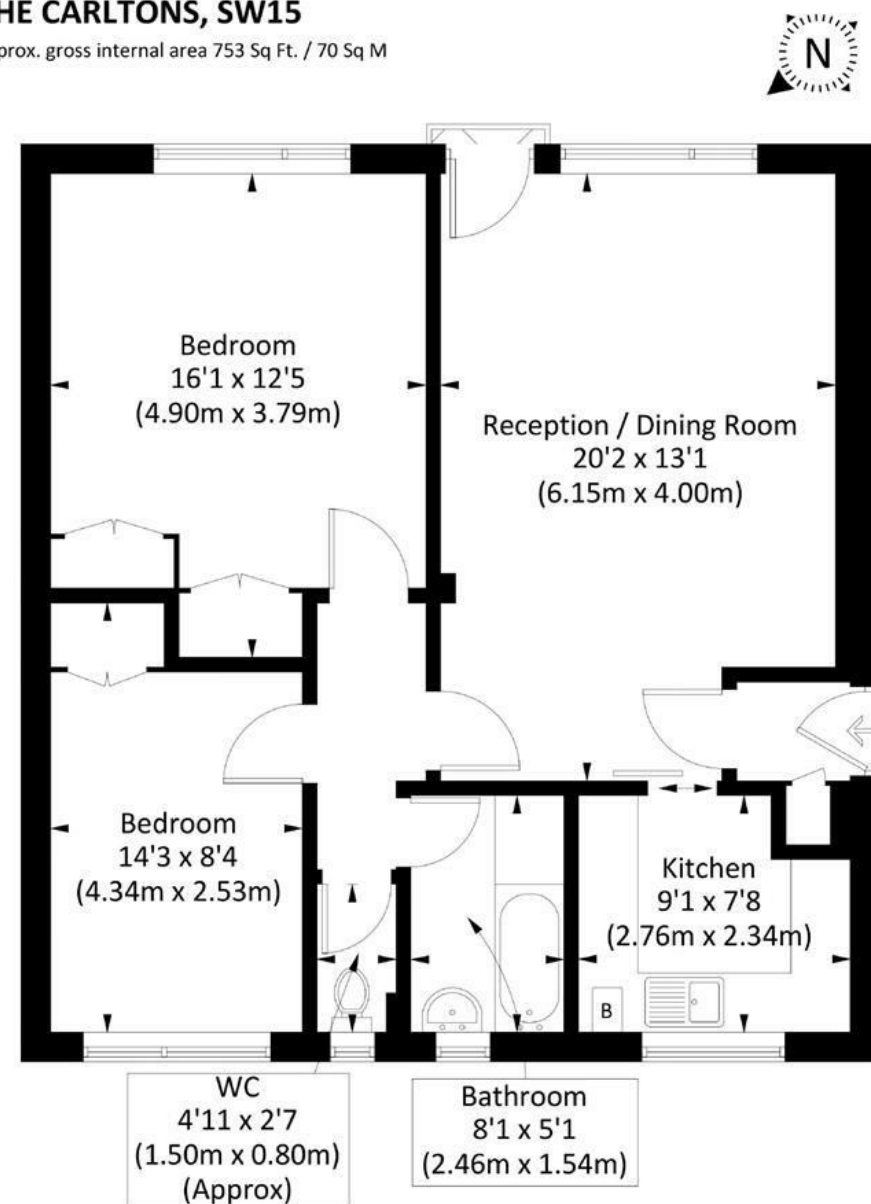


THE CARLTONS, SW15

Approx. gross internal area 753 Sq Ft. / 70 Sq M



Second Floor

Illustration for identification purposes only, measurements are approximate, not to scale. FloorplansUsketch.com © 2019 (ID600885)

DISCLAIMER•These particulars are intended to give a fair and substantially correct overall description for the guidance of intending purchasers and do not constitute an offer or part of a contract. Prospective purchasers and/or lessees ought to seek their own professional advice.
•All descriptions, dimensions, areas, references to condition and necessary permissions for use and occupation and other details are given in good faith and are believed to be correct, but any intending purchasers should not rely on them as statements or representations of fact, but must satisfy themselves by inspection or otherwise as to the correctness of each of them.
•All measurements are approximate.

The Carltons, London, SW15

A spacious and well presented two double bedroom flat on the second floor of this ideally located purpose built block. Offered on a furnished basis and benefiting from a private garage, the accommodation comprises entrance hallway, large and bright reception room with dining area, fully fitted kitchen with dishwasher, two double bedrooms, bathroom with shower over the bath and separate WC. Putney High Street, East Putney underground and the mainline station are all within a short walk. Available now.



- RECEPTION ROOM
- TWO DOUBLE BEDROOMS
- SEPARATE WC
- GARAGE
- EPC C
- FITTED KITCHEN
- BATHROOM
- COMMUNAL GARDEN
- PRIME LOCATION
- COUNCIL TAX BAND D

Per Calendar Month
£1,850 Per Calendar Month

