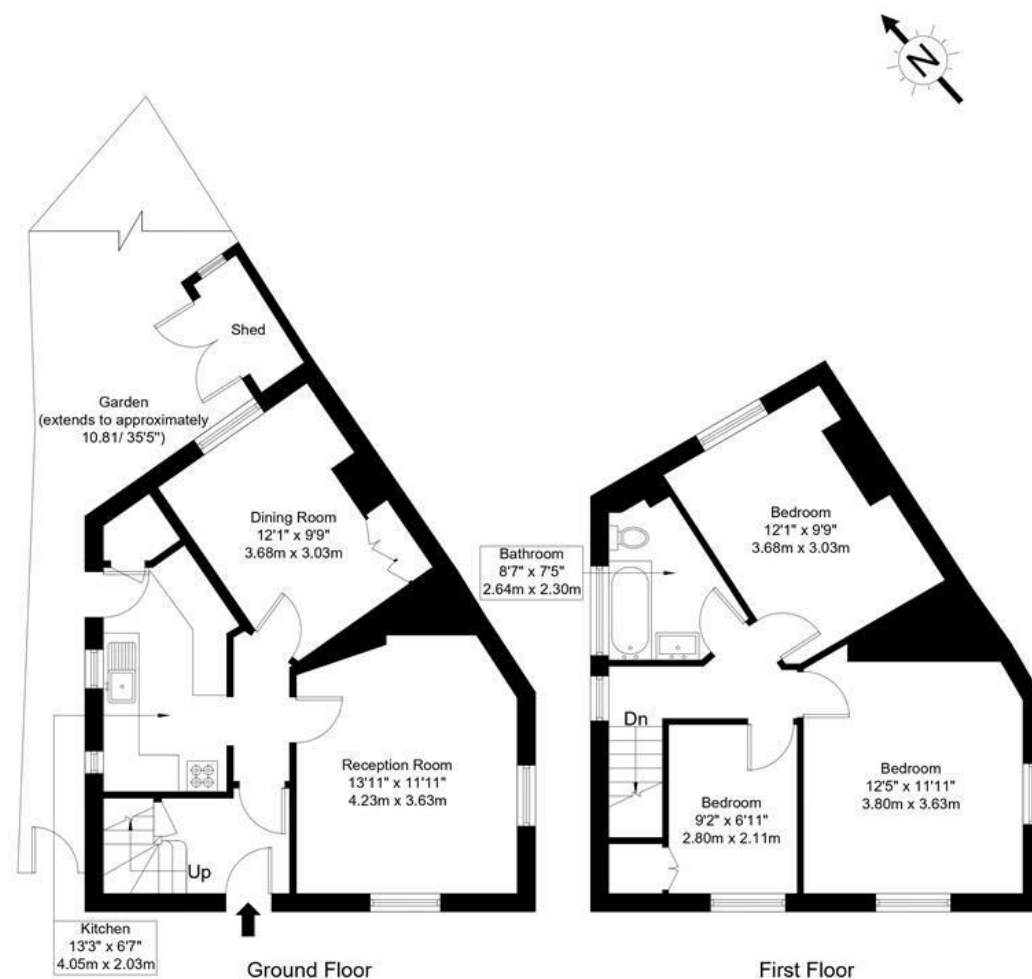


Swinburne Road, SW15 5EQ

Approx Gross Internal Area = 85.5 sq m / 920 sq ft



Ref :

Copyright **BLEU PLAN**

The Floor plan is not to scale and measurements and areas shown are approximate and therefore should be used for illustrative purposes only. The plan has been prepared in accordance with the RICS code of Measuring Practice and whilst we have confidence in the information produced it must not be relied on. Maximum lengths and widths are represented on the floor plan. If there is any aspect of particular importance, you should carry out or commission your own inspection of the property.
Copyright © BleuPlan

DISCLAIMER•These particulars are intended to give a fair and substantially correct overall description for the guidance of intending purchasers and do not constitute an offer or part of a contract. Prospective purchasers and/or lessees ought to seek their own professional advice.
•All descriptions, dimensions, areas, references to condition and necessary permissions for use and occupation and other details are given in good faith and are believed to be correct, but any intending purchasers should not rely on them as statements or representations of fact, but must satisfy themselves by inspection or otherwise as to the correctness of each of them.
•All measurements are approximate.



Swinburne Road, London, SW15

In need of modernisation, this three bedroom end of terrace, freehold house located on this quiet residential road in the Dover House conservation area. The ground floor accommodation comprises, reception room, dining room, kitchen with doors leading out to the rear garden. Upstairs there are three bedrooms and a family bathroom.

Swinburne Road is a quiet residential road close to the open spaces of Putney Heath, yet moments from a bus route heading into and out of Putney. This property is being sold chain free.



- THREE BEDROOMS
- DINING ROOM
- BATHROOM
- DOVERHOUSE CONSERVATION AREA
- RECEPTION ROOM
- KITCHEN
- REAR GARDEN
- CHAIN FREE

Guide Price
£750,000
Available

