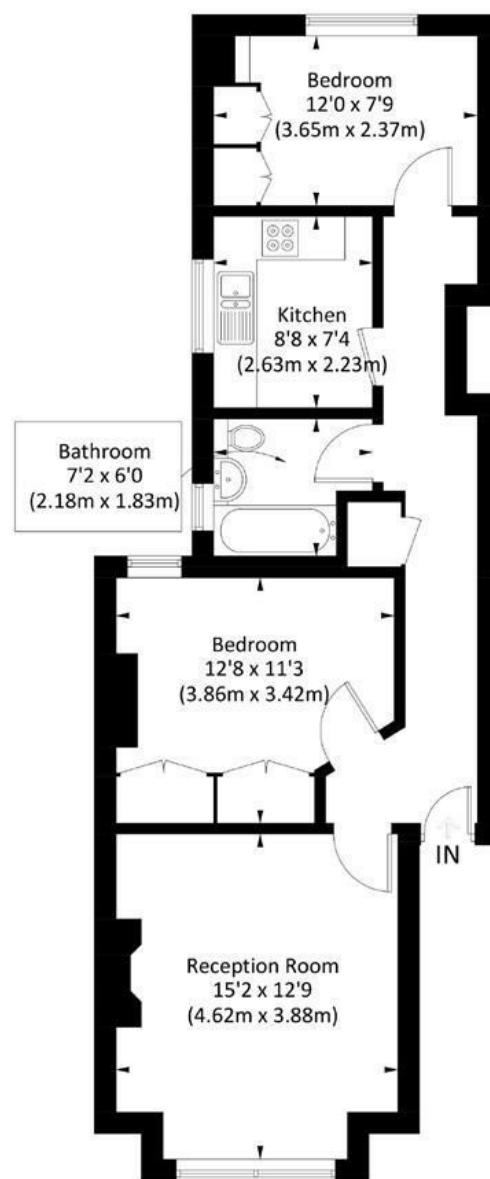


## VERA ROAD, SW6

Approx. gross internal area 655 Sq Ft. / 60.9 Sq M



Second Floor

Illustration for identification purposes only, measurements are approximate, not to scale. FloorplansUsketch.com © 2017 (ID387938)

**DISCLAIMER**•These particulars are intended to give a fair and substantially correct overall description for the guidance of intending purchasers and do not constitute an offer or part of a contract. Prospective purchasers and/or lessees ought to seek their own professional advice.

•All descriptions, dimensions, areas, references to condition and necessary permissions for use and occupation and other details are given in good faith and are believed to be correct, but any intending purchasers should not rely on them as statements or representations of fact, but must satisfy themselves by inspection or otherwise as to the correctness of each of them.  
•All measurements are approximate.



## Vera Road, Fulham, SW6

A beautifully presented two double bedroom flat on the second floor of this period property in the heart of Fulham and a short walk from the open spaces of Bishops Park. Offered on an unfurnished basis, the accommodation comprises an entrance hallway, bright reception room, fully fitted kitchen, two double bedrooms and luxury bathroom with shower over the bath. Vera Road is a quiet residential street just off the popular Munster Road and perfectly located within easy access of Fulham Broadway. The river is also only a short walk away. This lovely flat is available now.



- THIRD FLOOR FLAT
- FULLY FITTED KITCHEN
- BATHROOM
- CLOSE TO FULHAM BROADWAY
- EPC C
- RECEPTION ROOM
- TWO DOUBLE BEDROOMS
- GREAT LOCATION
- MOMENTS FROM BISHOPS PARK
- COUNCIL TAX BAND D

Per Calendar Month  
**£2,000 Per Calendar Month**

