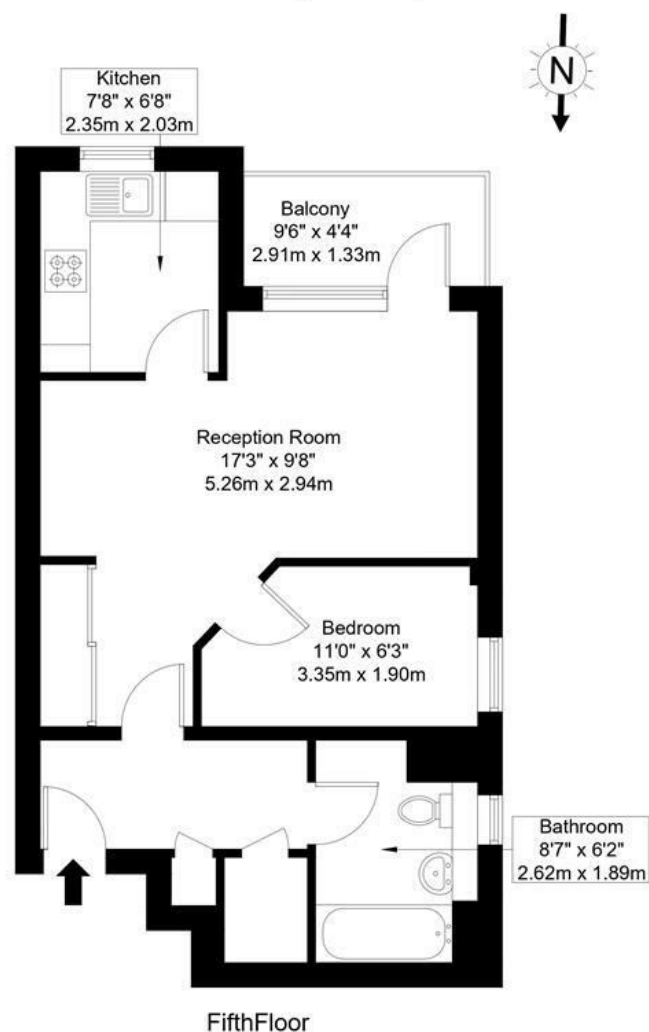


Gipsy Lane, SW15 5RJ

Approx Gross Internal Area = 42.37 sq m / 456 sq ft

Balcony = 3.87 sq m / 42 sq ft

Total = 46.24 sq m / 498 sq ft



Ref :

Copyright

**BLEU
PLAN**

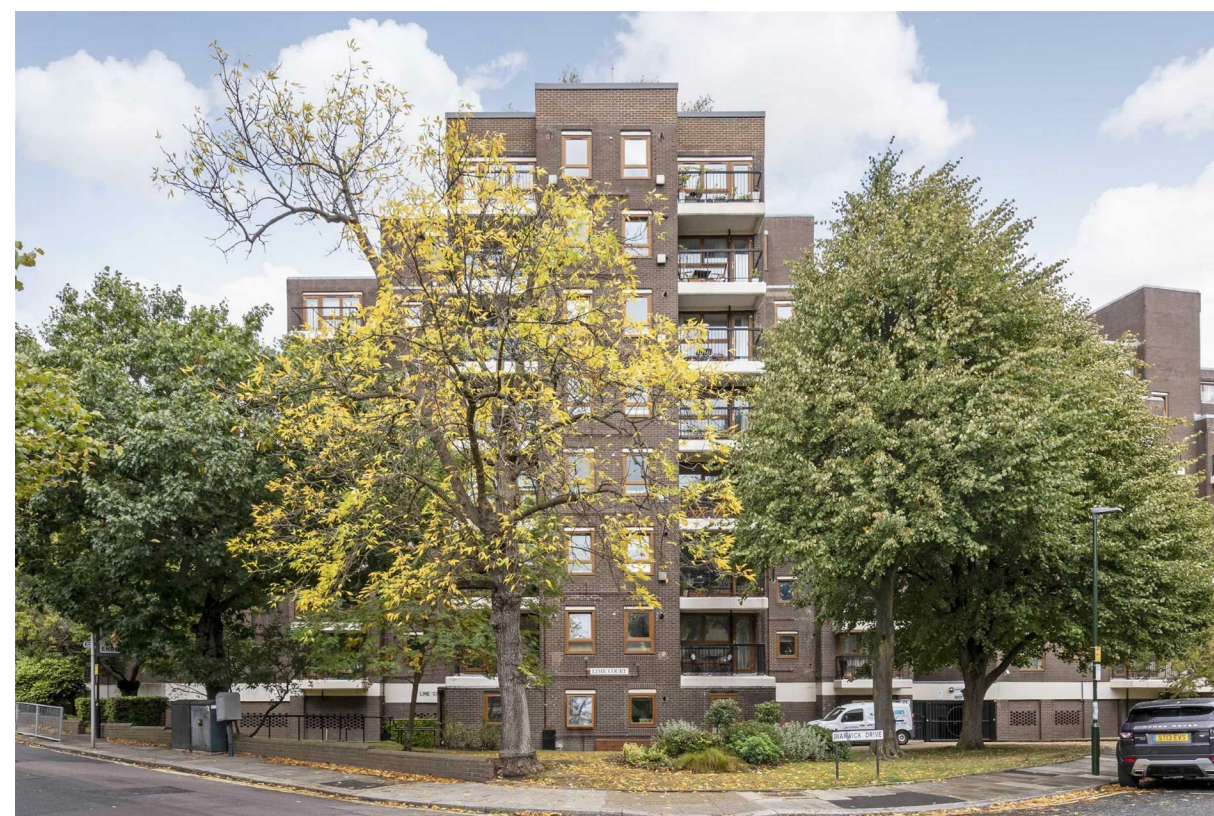
The Floor plan is not to scale and measurements and areas shown are approximate and therefore should be used for illustrative purposes only. The plan has been prepared in accordance with the RICS code of Measuring Practice and whilst we have confidence in the information produced it must not be relied on. Maximum lengths and widths are represented on the floor plan. If there is any aspect of particular importance, you should carry out or commission your own inspection of the property.
Copyright © BleuPlan

DISCLAIMER•These particulars are intended to give a fair and substantially correct overall description for the guidance of intending purchasers and do not constitute an offer or part of a contract. Prospective purchasers and/or lessees ought to seek their own professional advice.
•All descriptions, dimensions, areas, references to condition and necessary permissions for use and occupation and other details are given in good faith and are believed to be correct, but any intending purchasers should not rely on them as statements or representations of fact, but must satisfy themselves by inspection or otherwise as to the correctness of each of them.
•All measurements are approximate.



Lime Court, Putney, SW15

A fantastic one bedroom flat with a private balcony situated on the 5th floor (with lift) of this well maintained and popular private development on the border of Putney and Barnes. Benefiting from stunning views, the accommodation comprises an entrance hallway, bright and airy reception room with doors to the balcony, fitted kitchen, bedroom and smart bathroom with shower over the bath. Lime Court is a well run development perfectly located within a short walk of Barnes BR station as well as the open spaces of Putney Common. Putney High Street is also within easy access. This property is being sold Chain Free and a 360 virtual tour is available.



- 456 SQ FT
- RECEPTION ROOM
- DOUBLE BEDROOM
- PRIVATE BALCONY
- WELL MAINTAINED BLOCK
- ONE BEDROOM FLAT
- FITTED KITCHEN
- SMART BATHROOM
- STUNNING VIEWS
- EPC RATING: C

Guide Price

£375,000

Available

