

WARREN

The Putney Estate Agent

WARREN

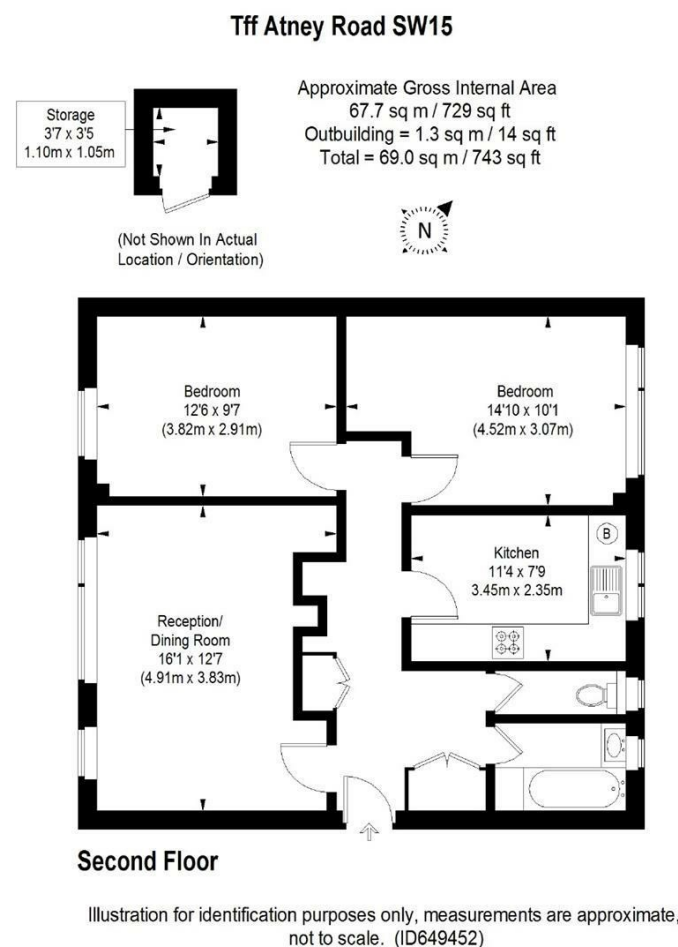
The Putney Estate Agent

Atney Road, Putney, SW15

A bright and spacious two double bedroom purpose built flat located just moments from Putney High Street. Situated on the top floor, this property has views over the communal lawns to the rear and is presented in excellent condition throughout.

Comprising, two double bedrooms, kitchen with breakfast bar, large reception room, bathroom, separate W.C. There are three internal storage cupboards as well as a large external storage cupboard.

Atney Road is within close proximity of both Putney Mainline Station as well as East Putney & Putney Bridge Underground Stations. The River Thames and the open spaces of Wandsworth Park are also close by.



- 729 SQ FT
- RECEPTION ROOM
- BATHROOM
- OFF STREET PARKING
- EPC D
- TWO DOUBLE BEDROOMS
- KITCHEN
- COMMUNAL GARDENS
- CLOSE TO AMENITIES

Guide Price
£500,000
Available



DISCLAIMER•These particulars are intended to give a fair and substantially correct overall description for the guidance of intending purchasers and do not constitute an offer or part of a contract. Prospective purchasers and/or lessees ought to seek their own professional advice.
•All descriptions, dimensions, areas, references to condition and necessary permissions for use and occupation and other details are given in good faith and are believed to be correct, but any intending purchasers should not rely on them as statements or representations of fact, but must satisfy themselves by inspection or otherwise as to the correctness of each of them.
•All measurements are approximate.

