

WARREN

The Putney Estate Agent

Colinette Road, SW15

Approx. gross internal area 442 Sq Ft. / 41.1 Sq M

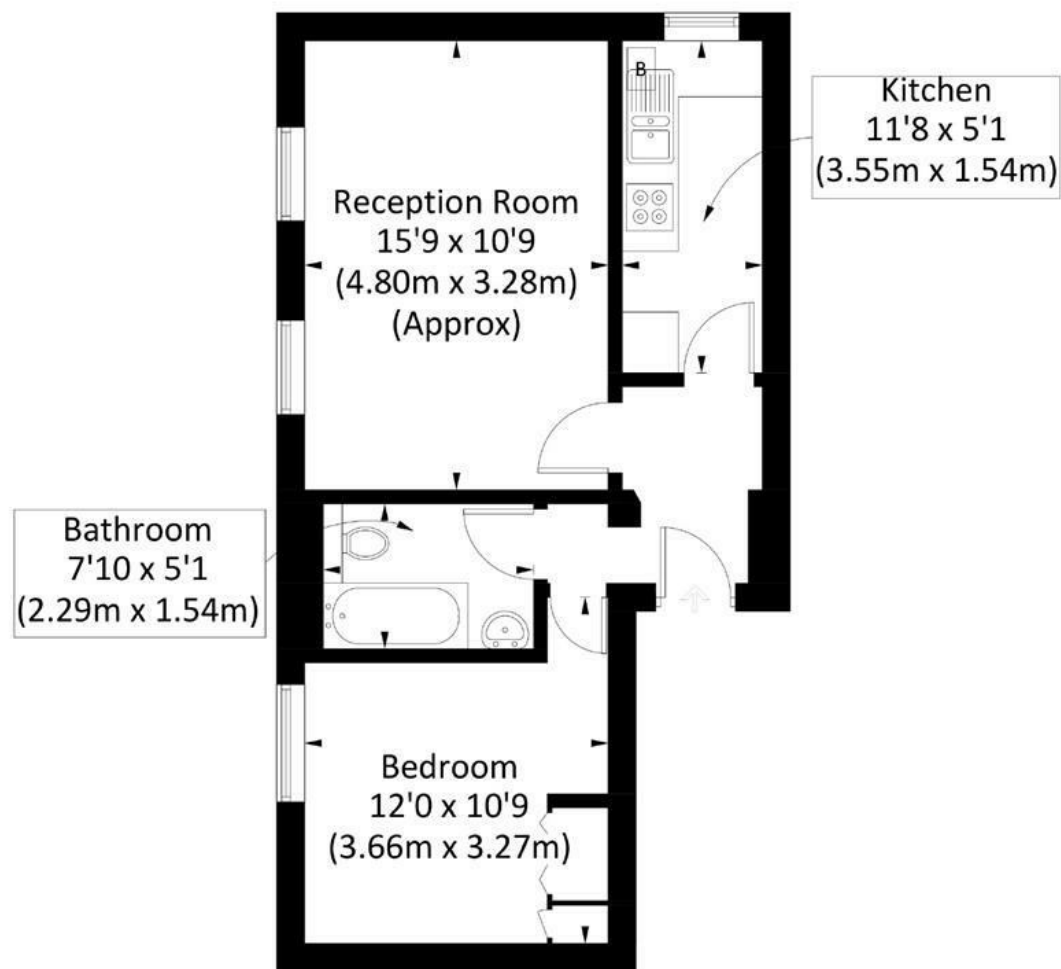


Illustration for identification purposes only, measurements are approximate, not to scale. FloorplansUsketch.com © 2019 (ID516994)

DISCLAIMER•These particulars are intended to give a fair and substantially correct overall description for the guidance of intending purchasers and do not constitute an offer or part of a contract. Prospective purchasers and/or lessees ought to seek their own professional advice.

•All descriptions, dimensions, areas, references to condition and necessary permissions for use and occupation and other details are given in good faith and are believed to be correct, but any intending purchasers should not rely on them as statements or representations of fact, but must satisfy themselves by inspection or otherwise as to the correctness of each of them.
•All measurements are approximate.



194 Upper Richmond Road, London SW15 2SH Also at: 139 Lower Richmond Road, London SW15 1EZ

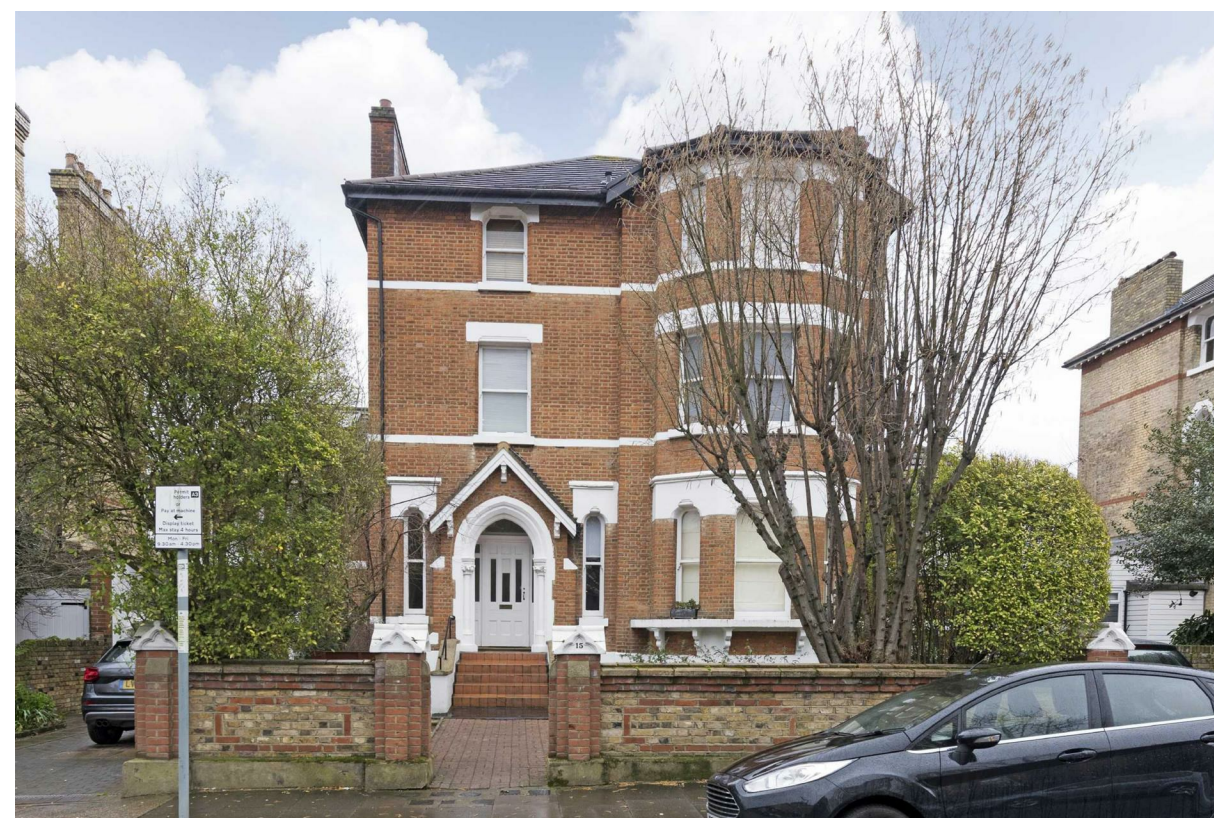
E: sales@warrenputney.co.uk T: 020 8780 1100 F: 020 8780 0872

WARREN

The Putney Estate Agent

Colinette Road, Putney, SW15

A fantastic one bedroom flat on the first floor of this imposing detached house in prime West Putney. Offered on a part furnished basis, the accommodation comprises an entrance hallway, bright and spacious reception room, galley style kitchen, double bedroom and a bathroom with shower. Colinette Road is ideally located for Putney High Street and the mainline station. Available late September 2022.



- SMART ONE BEDROOM FLAT
- DOUBLE BEDROOM
- BATHROOM
- PRIME WEST PUTNEY ROAD
- EPC C
- SPACIOUS RECEPTION
- GALLEY STYLE KITCHEN
- PERIOD CONVERSION
- WELL LOCATED FOR TRANSPORT LINKS AND HIGH STREET
- COUNCIL TAX BAND D

Per Calendar Month
£1,700 Per Calendar Month

E: sales@warrenputney.co.uk

T: 020 8780 1100 F: 020 8780 0872

warrenputney.co.uk

