

Keswick Road

Approximate Gross Internal Area (Including Mezzanine)

32 sq m / 344 sq ft

Shed = 2.7 sq m / 29 sq ft

Total = 34.7 sq m / 373 sq ft

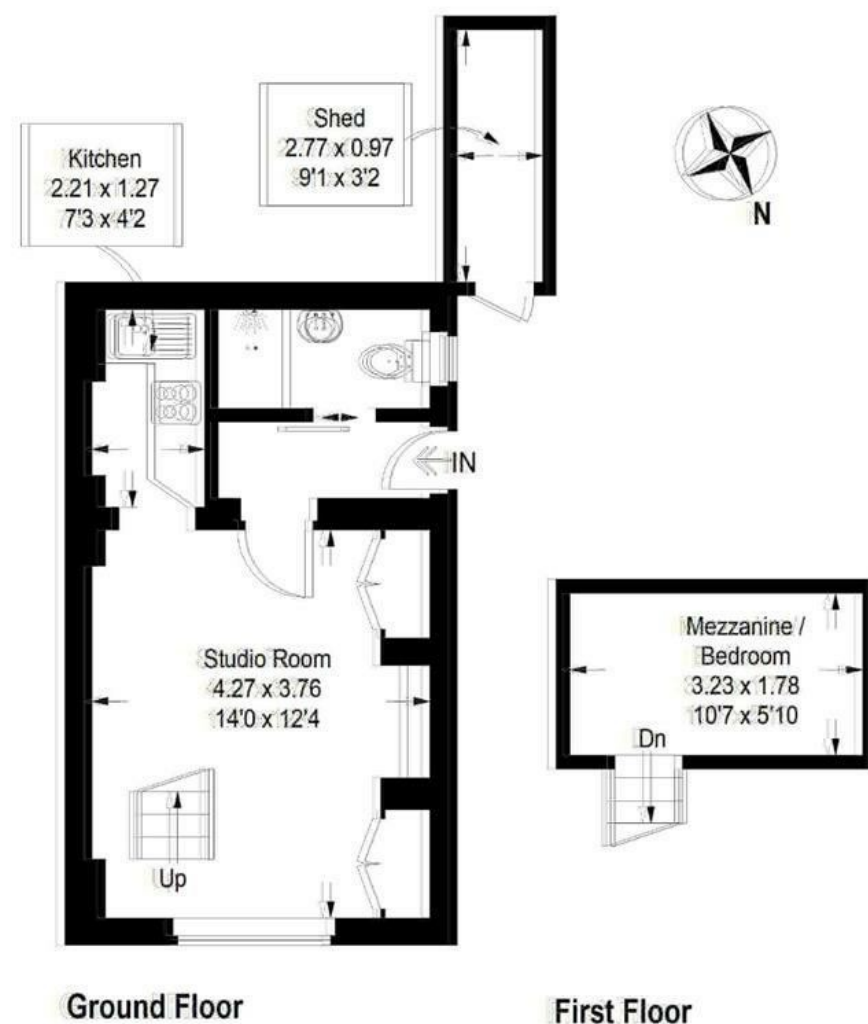


Illustration for identification purposes only,
measurements are approximate, not to scale.
FloorplansUsketch.com © 2021 (ID728191)

DISCLAIMER•These particulars are intended to give a fair and substantially correct overall description for the guidance of intending purchasers and do not constitute an offer or part of a contract. Prospective purchasers and/or lessees ought to seek their own professional advice.
•All descriptions, dimensions, areas, references to condition and necessary permissions for use and occupation and other details are given in good faith and are believed to be correct, but any intending purchasers should not rely on them as statements or representations of fact, but must satisfy themselves by inspection or otherwise as to the correctness of each of them.
•All measurements are approximate.



Keswick Road, Putney, SW15

A very cool and quirky studio apartment with a mezzanine sleeping platform, private garden and own front door located on this popular residential road moments from the underground station. Offered on an unfurnished basis and benefiting from wood floors, the accommodation comprises and bright studio room and built in storage, steps leading to a superb mezzanine sleeping platform, fitted kitchen, shower room, outside shed/utility room and private patio garden. This great studio flat is perfectly located for everything Putney has to offer. The underground is five minutes walk and you're at the high street in ten. Available mid July 2025.



- STUDIO APARTMENT
- FITTED KITCHEN
- PRIVATE PATIO GARDEN
- SHED/UTILITY ROOM
- EPC E
- MEZZANINE SLEEPING PLATFORM
- SHOWER ROOM
- OWN FRONT DOOR
- CENTRAL LOCATION
- COUNCIL TAX BAND B

Per Calendar Month
£1,500 Per Calendar Month

