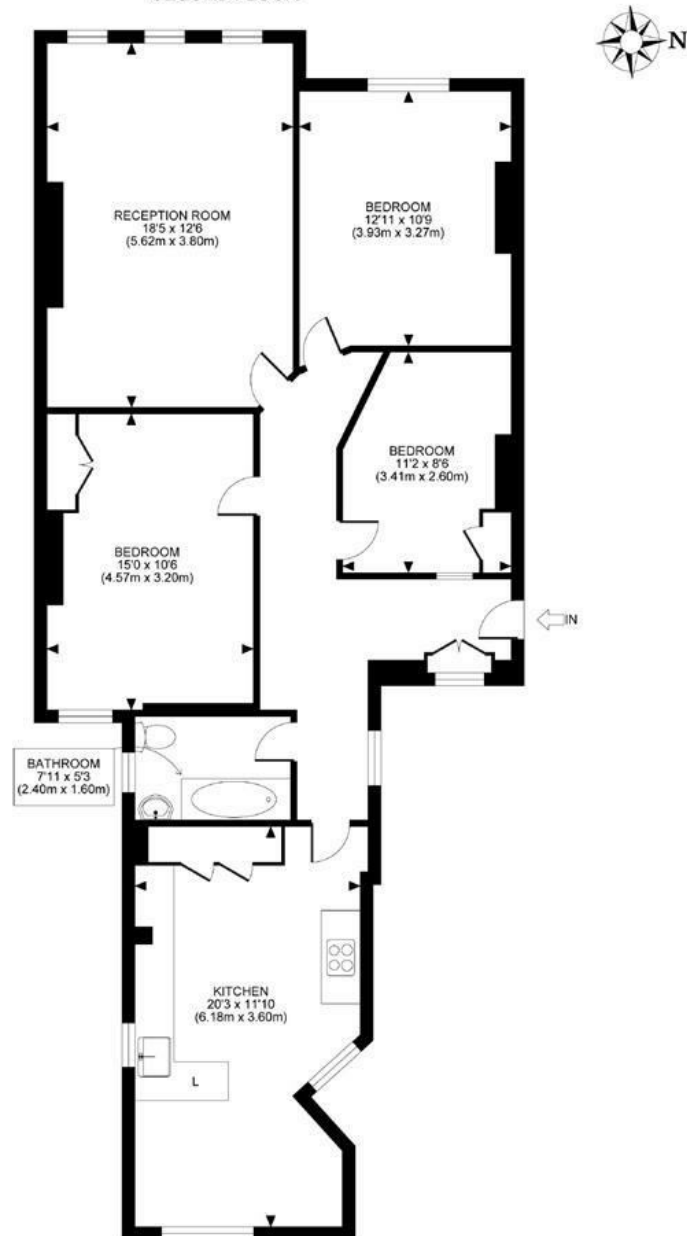


Disraeli Gardens, Putney, SW15

A stunning two/three bedroom flat on the second floor of this prestigious mansion development in the heart of Putney. Offered on an unfurnished basis and benefiting from immaculate communal gardens and residents tennis court, the accommodation comprises a bright reception room with wood floors, fully fitted kitchen/dining room, two generous double bedrooms, a further room which would be ideal as an office or guest bedroom, and bathroom. Disraeli Gardens is a beautifully maintained development and is located within a short walk of Putney High Street with all the local amenities as well as being of close proximity to both East Putney Underground and Putney British Rail Stations. Offered on an unfurnished basis and available mid June 2025.

DISRAELI GARDENS, SW15
TOTAL APPROX. FLOOR PLAN AREA 1036 SQ.FT (96.3 SQ.M.)
SECOND FLOOR



All measurements walls, doors, windows, fittings and their appliances, their size and locations are shown conventionally and are approximate only and cannot be regarded as being a representation either by the seller or his agent nor zentuvo
www.zentuvo.co.uk

DISCLAIMER•These particulars are intended to give a fair and substantially correct overall description for the guidance of intending purchasers and do not constitute an offer or part of a contract. Prospective purchasers and/or lessees ought to seek their own professional advice.
•All descriptions, dimensions, areas, references to condition and necessary permissions for use and occupation and other details are given in good faith and are believed to be correct, but any intending purchasers should not rely on them as statements or representations of fact, but must satisfy themselves by inspection or otherwise as to the correctness of each of them.
•All measurements are approximate.



- PRESTIGIOUS PRIVATE DEVELOPMENT
- KITCHEN/DINING ROOM
- SMART BATHROOM
- TENNIS COURT
- EPC C
- RECEPTION ROOM
- THREE BEDROOMS
- COMMUNAL GARDENS
- CENTRALLY LOCATED
- COUNCIL TAX BAND E

Per Calendar Month
£3,000 Per Calendar Month



