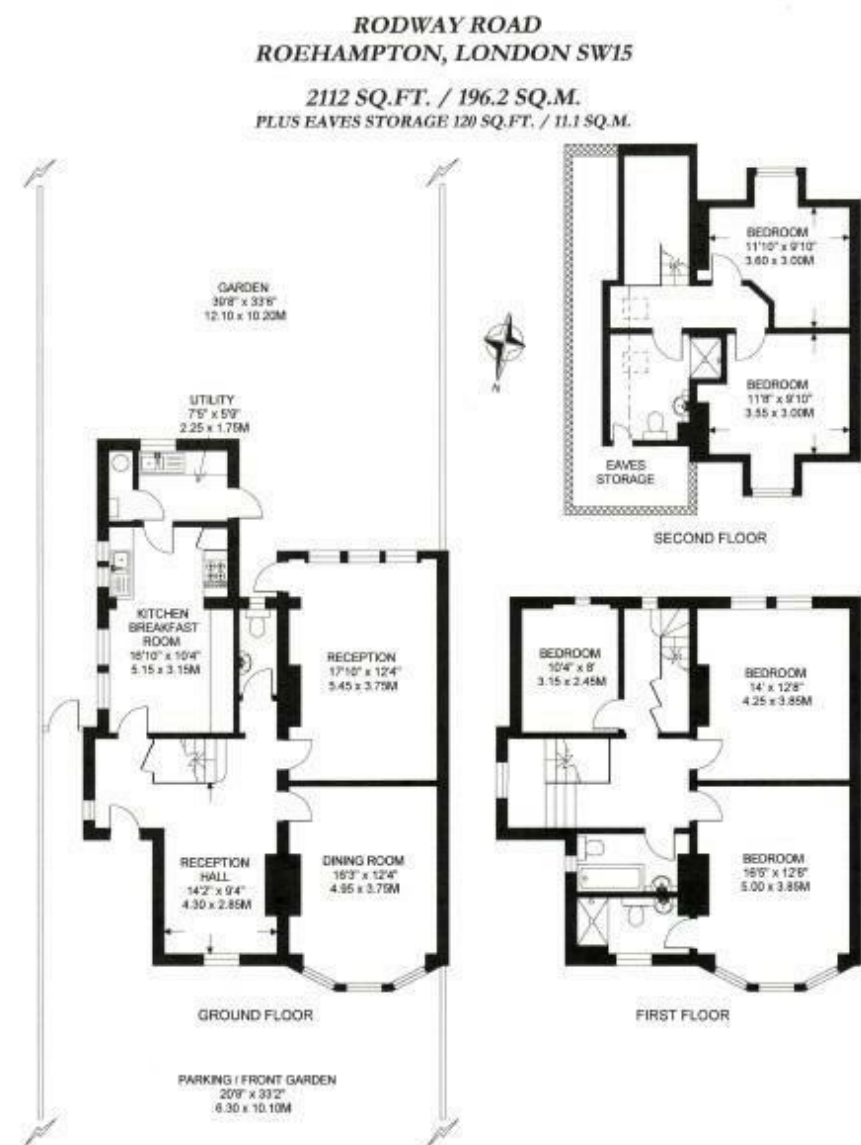


## Rodway Road, London, SW15

A superbly appointed five bedroom Edwardian house located on this quiet residential road in the heart of Roehampton. Offered on an unfurnished basis and benefiting from a south facing garden and off-street parking, the ground floor accommodation comprises an entrance hallway large enough to be used as a further reception/study area, drawing room, dining room, kitchen/breakfast room, utility room and guest WC. To the upper floors there is the principal suite, four further bedrooms, family bathroom and further shower room. Rodway Road is a pretty tree lined road in Roehampton and moments from the open spaces of Richmond Park, close to the A3 and with great bus links into Putney and Barnes. Available 1st April 2025.



- FIVE BEDROOM SEMI DETACHED HOUSE
- KITCHEN/BREAKFAST ROOM
- FIVE BEDROOMS
- PRIVATE GARDEN
- EPC E
- TWO RECEPTION ROOM
- UTILITY ROOM
- THREE BATH/SHOWER ROOM
- OFF-STREET PARKING
- COUNCIL TAX BAND G

Per Calendar Month  
**£4,500 Per Calendar Month**



