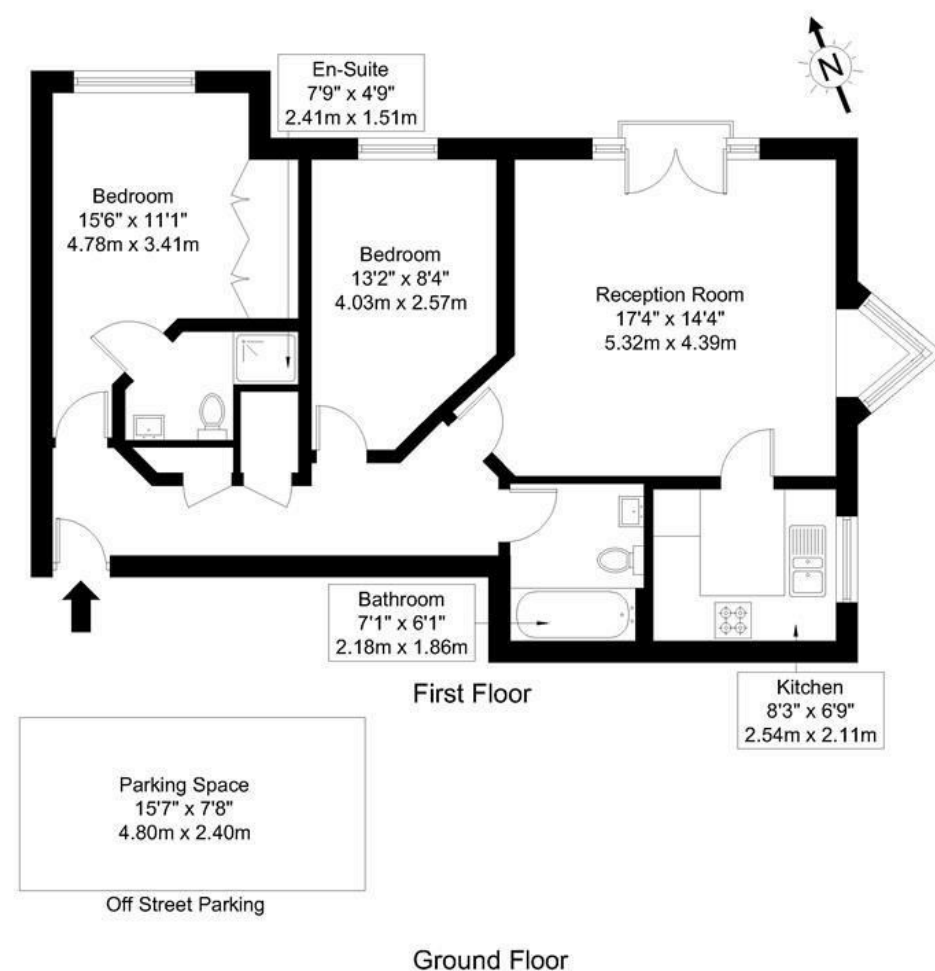


## Clockhouse Place, SW15 2EL

Approx Gross Internal Area = 67.6 sq m / 728 sq ft



Ref:

Copyright **BLEU PLAN**

The Floor plan is not to scale and measurements and areas shown are approximate and therefore should be used for illustrative purposes only. The plan has been prepared in accordance with the RICS code of Measuring Practice and whilst we have confidence in the information produced it must not be relied on. Maximum lengths and widths are represented on the floor plan. If there is any aspect of particular importance, you should carry out or commission your own inspection of the property.

Copyright @ BLEUPLAN

**DISCLAIMER**•These particulars are intended to give a fair and substantially correct overall description for the guidance of intending purchasers and do not constitute an offer or part of a contract. Prospective purchasers and/or lessees ought to seek their own professional advice.

•All descriptions, dimensions, areas, references to condition and necessary permissions for use and occupation and other details are given in good faith and are believed to be correct, but any intending purchasers should not rely on them as statements or representations of fact, but must satisfy themselves by inspection or otherwise as to the correctness of each of them.  
•All measurements are approximate.



## Clockhouse Place, London, SW15

A first floor apartment with two double bedrooms, two bathrooms and secure allocated parking in a prestigious gated development. The property is a short distance away from East Putney Station. Clockhouse Place was built around 1996 by John Laing Homes, who are renowned for the quality of their developments.

Clockhouse Place is a private development just off Lytton Grove. East Putney Station is very close and Putney Rail Station is just a short distance. Local green spaces include Wandsworth Park, Putney Heath and Wimbledon Commons



- TWO DOUBLE BEDROOMS
- TWO BATHROOMS
- SECURE GATED OFF STREET PARKING
- CLOSE TO EAST PUTNEY UNDERGROUND
- RECEPTION ROOM
- KITCHEN
- COMMUNAL GARDENS
- WALKING DISTANCE TO PUTNEY HIGH STREET

Guide Price  
**£550,000**  
Available



