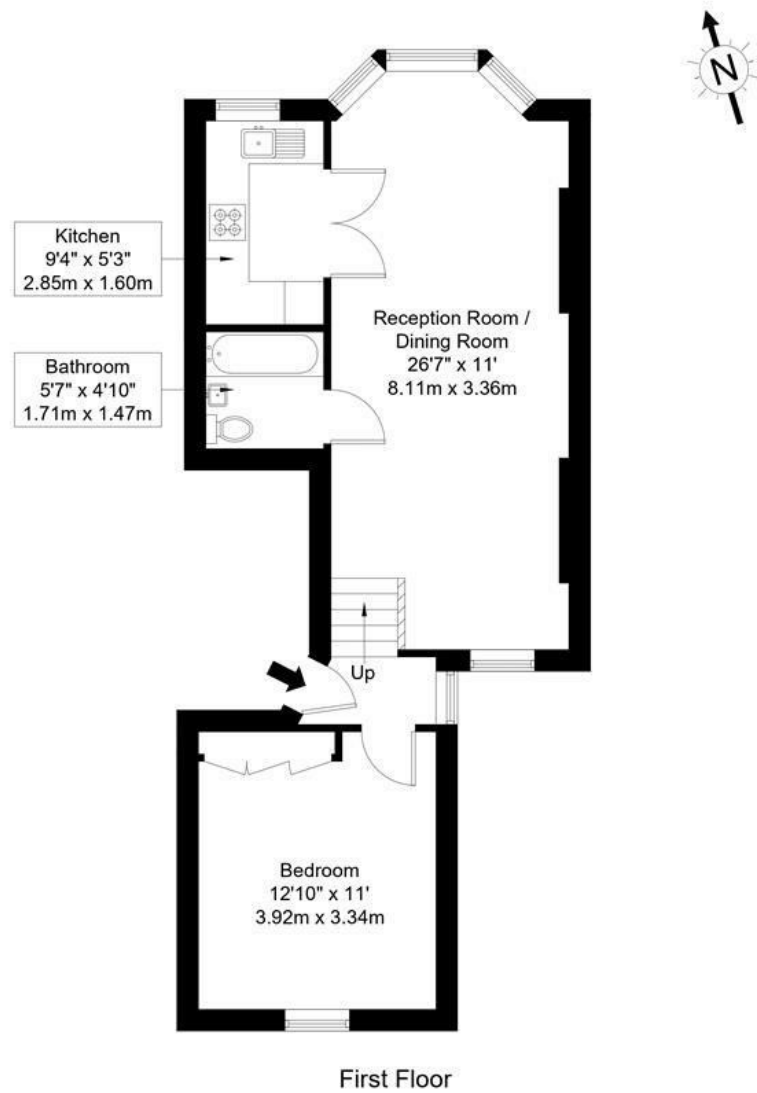


Lower Richmond Road, SW15 1HH

Approx Gross Internal Area = 48.5 sq m / 522 sq ft



Ref :

Copyright **BLEU PLAN**

The Floor plan is not to scale and measurements and areas shown are approximate and therefore should be used for illustrative purposes only. The plan has been prepared in accordance with the RICS code of Measuring Practice and whilst we have confidence in the information produced it must not be relied on. If there is any aspect of particular importance, you should carry out or commission your own inspection of the property.



DISCLAIMER•These particulars are intended to give a fair and substantially correct overall description for the guidance of intending purchasers and do not constitute an offer or part of a contract. Prospective purchasers and/or lessees ought to seek their own professional advice.
 •All descriptions, dimensions, areas, references to condition and necessary permissions for use and occupation and other details are given in good faith and are believed to be correct, but any intending purchasers should not rely on them as statements or representations of fact, but must satisfy themselves by inspection or otherwise as to the correctness of each of them.
 •All measurements are approximate.

Lower Richmond Road, London, SW15

A light and airy first floor period conversion flat situated in west Putney.

Comprising, double bedroom with ample storage to the rear of the property, bathroom, modern kitchen and a large reception room which has plenty of space for a large dining table and chairs. The Lower Richmond Road is an ideal location and is close to the green open spaces of Putney Common and just a short stroll from The River Thames. Putney High Street with all its amenities and transport links is also very close by.

This property is being offered with a share of freehold and comes with vacant possession.



- ONE DOUBLE BEDROOM CONVERSION FLAT
- WEST PUTNEY LOCATION
- LARGE RECEPTION ROOM
- DINING AREA
- KITCHEN
- BATHROOM
- SHARE OF FREEHOLD
- CLOSE TO ALL AMENITIES

Guide Price
£475,000

Under Offer (SSTC)

