

BENDEMEER ROAD, SW15

Approx. gross internal area 481 Sq Ft. / 44.7 Sq M
Shed Approx. gross internal area 12 Sq Ft. / 1.1 Sq M

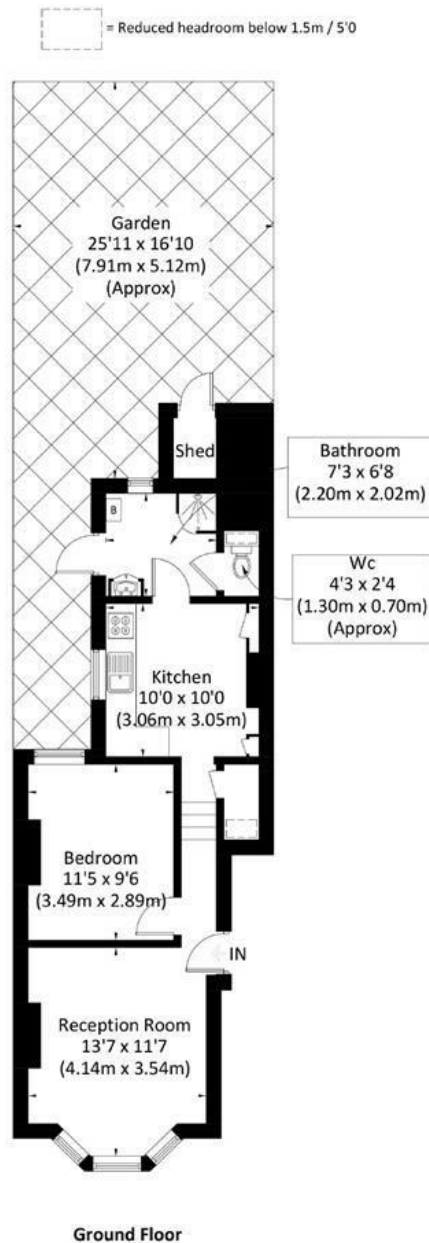


Illustration for identification purposes only, measurements are approximate, not to scale. FloorplansUsketch.com © 2017 (ID358883)

DISCLAIMER•These particulars are intended to give a fair and substantially correct overall description for the guidance of intending purchasers and do not constitute an offer or part of a contract. Prospective purchasers and/or lessees ought to seek their own professional advice.

•All descriptions, dimensions, areas, references to condition and necessary permissions for use and occupation and other details are given in good faith and are believed to be correct, but any intending purchasers should not rely on them as statements or representations of fact, but must satisfy themselves by inspection or otherwise as to the correctness of each of them.
•All measurements are approximate.

Bendemeer Road, Putney, SW15

A stunning one bedroom garden flat located on this highly desirable road moments from the river in lower west Putney. Offered on an unfurnished basis and benefiting from a private garden, the accommodation comprises an entrance hallway, bright reception room, fully fitted eat-in kitchen, double bedroom and luxury shower room. The property is immaculately presented throughout and is perfectly located for all the transport and amenities of the Lower Richmond Road and Putney High Street. Available early September 2024.



- GARDEN FLAT
- EAT-IN KITCHEN
- SHOWER ROOM
- GREAT LOCATION
- EPC D
- RECEPTION ROOM
- DOUBLE BEDROOM
- PRIVATE GARDEN
- CLOSE TO RIVER
- COUNCIL TAX BAND D

Per Calendar Month
£1,750 Per Calendar Month

