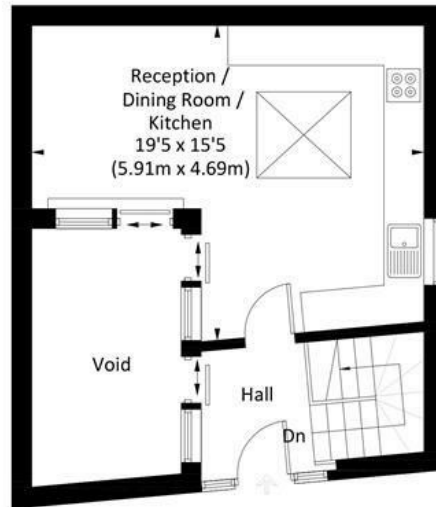
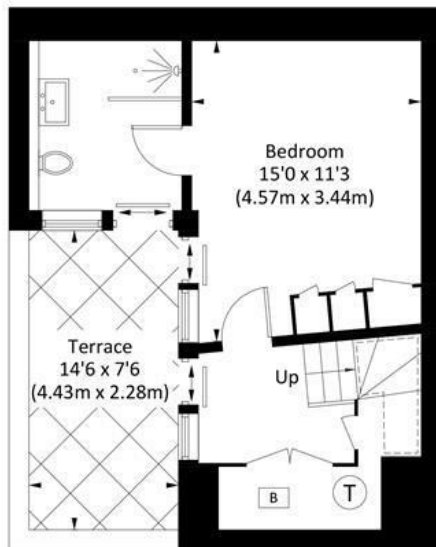


VIEWFIELD ROAD, SW18

Approx. gross internal area 658 Sq Ft. / 61.1 Sq M
(Excluding Void)



Ground Floor
(319 Sq Ft.)



Lower Ground Floor
(339 Sq Ft.)

Illustration for identification purposes only, measurements are approximate, not to scale. FloorplansUsketch.com © 2023 (ID935152)

Viewfield Road, London, SW18

A stunning and truly unique one bedroom detached house located in the heart of Southfields and within easy access of Southfields underground station. Offered on an unfurnished basis and arranged over two floors, the ground floor accommodation comprises an entrance hallway, bright reception room with fantastic open plan, fully fitted kitchen/dining room overlooking the patio below. From the entrance hallway, the stairs lead down to a further hallway with access to the patio, a lovely double bedroom with fitted wardrobes and further access to the patio, a luxury en suite shower room and further utility room with washing machine and separate tumble dryer.

This spectacular property needs to be seen to be appreciated. Available early September 2024.



- ONE BED DETACHED HOUSE
- RECEPTION ROOM
- DOUBLE BEDROOM
- PRIVATE PATIO
- EPC E
- BRAND NEW BUILD
- OPEN PLAN KITCHEN/DINING
- LUXURY SHOWER ROOM
- GREAT LOCATION
- COUNCIL TAX BAND D

Per Calendar Month
£2,250 Per Calendar Month



DISCLAIMER•These particulars are intended to give a fair and substantially correct overall description for the guidance of intending purchasers and do not constitute an offer or part of a contract. Prospective purchasers and/or lessees ought to seek their own professional advice.

- All descriptions, dimensions, areas, references to condition and necessary permissions for use and occupation and other details are given in good faith and are believed to be correct, but any intending purchasers should not rely on them as statements or representations of fact, but must satisfy themselves by inspection or otherwise as to the correctness of each of them.
- All measurements are approximate.

